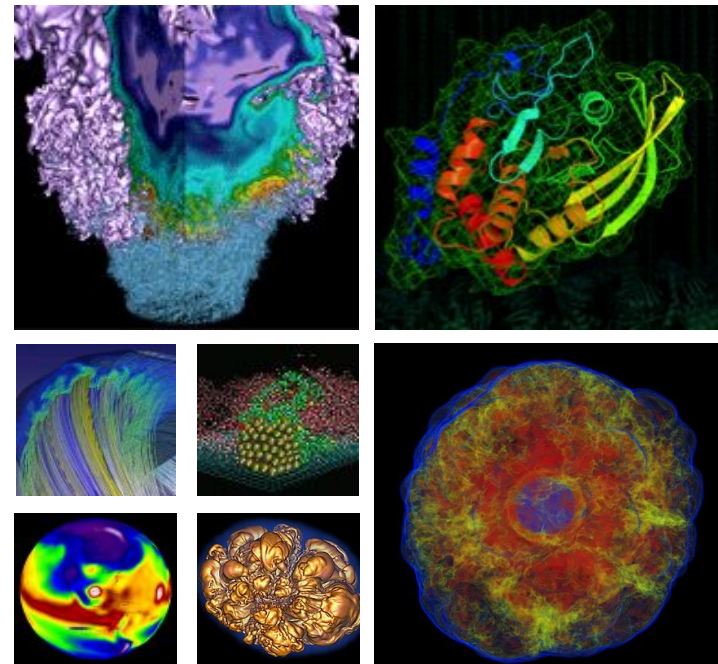


NUG Monthly Meeting



20 January, 2022

Today's plan



- Interactive - please participate!
 - Raise hand or just speak up
 - [NERSC User Slack](#) (link in chat), **#webinars** channel
- Agenda:
 - Win-of-the-month
 - Today-I-learned
 - Announcements/CFPs
 - Topic of the day: **Run-time configuration for climate models on Cori — throughput per job or throughput per year?** with Koichi Sakaguchi from PNNL
 - Coming meetings: topic suggestions/requests?
 - Last month's numbers

Win of the month



Show off an achievement, or shout out someone else's achievement, e.g.:

- Had a paper accepted
- Solved a bug
- A scientific achievement (maybe candidate for Science highlight, or **High Impact Scientific Achievement award**)
- An **Innovative Use of High Performance Computing** (also a candidate for an award) (<https://www.nersc.gov/science/nersc-hpc-achievement-awards/>)

Please let us know of award-worthy work from you or your colleagues - tell us what you did, and what was the key insight?

Today I learned



What surprised you that might benefit other users to hear about?
(and might help NERSC identify documentation improvements!)

Eg:

- Something you got stuck on, hit a dead end, or turned out to be wrong about
 - Give others the benefit of your experience!
 - Opportunity to improve NERSC documentation
- A tip for using NERSC
- Something you learned that might benefit other NERSC users

"If we knew what it was we were doing, it would not be called research, would it?" -
Einstein

Announcements and CFPs



Welcome to AY22!

See weekly email or last month's slides for important differences

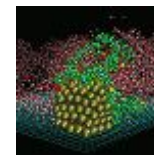
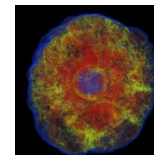
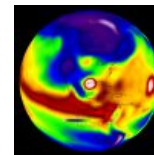
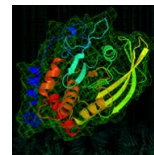
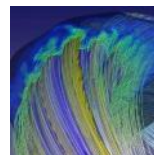
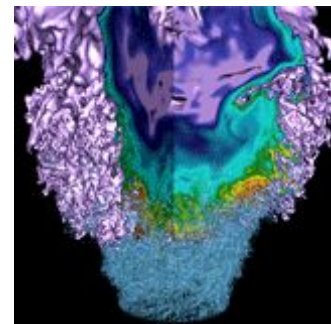
- Did you remember to mark your continuing project members as continuing, in iris.nersc.gov?
- New default python module (Python 3.9)
- NERSC-hours recalibrated to Perlmutter-CPU-Node-hours
 - Perlmutter jobs are currently still free of charge
 - GPU node hours are a separate allocation (and also currently free)

Announcements and CFPs



- Please participate in the **NERSC Annual User Survey!** Look for an email (a couple of weeks ago) from NERSC@nbresearch.com for your survey link
- Cori default modules to change in March maintenance
- Tomorrow (Friday) 12:30pm: join the "Julia at NERSC" call - see weekly email for details
- Others?

Run-time configuration for climate models on Cori – throughput per job or throughput per year?



Koichi Sakaguchi, PNNL

Coming up



Upcoming topics:

NERSC docs

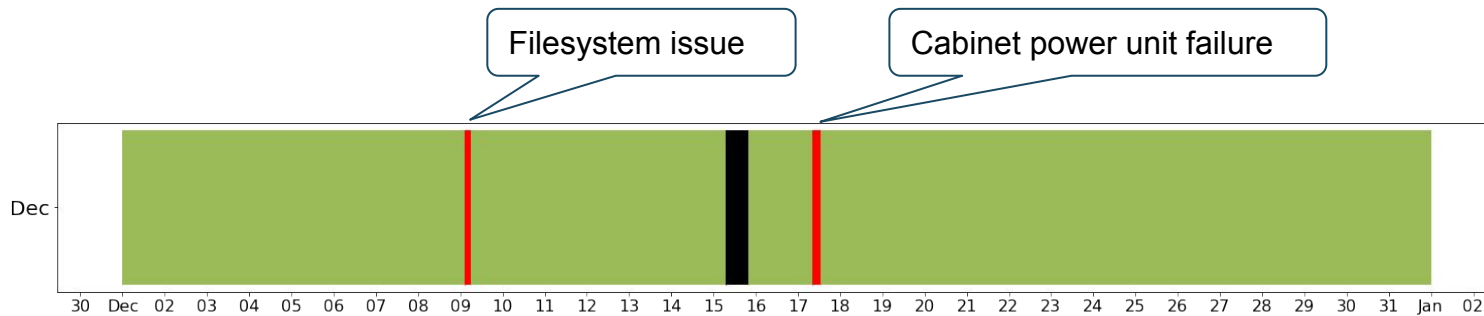
NERSC Annual User Survey - a first look at some outcomes

We'd love to hear more lightning talks **from NERSC users** about the research you use NERSC for!

Last month's numbers - Dec



Cori: 3 outages (2 unscheduled totaling 8 hrs 0 min)



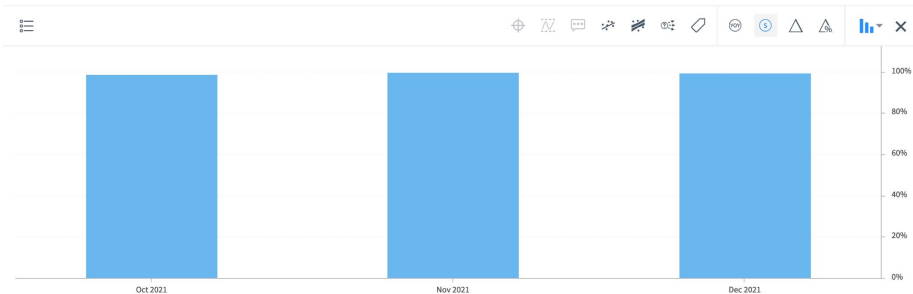
Last month's numbers - Dec



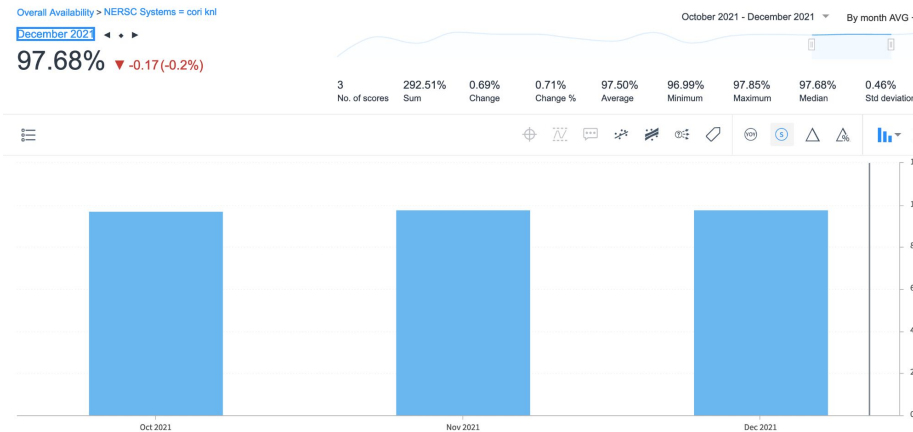
Cori KNL Availability:



Scheduled:



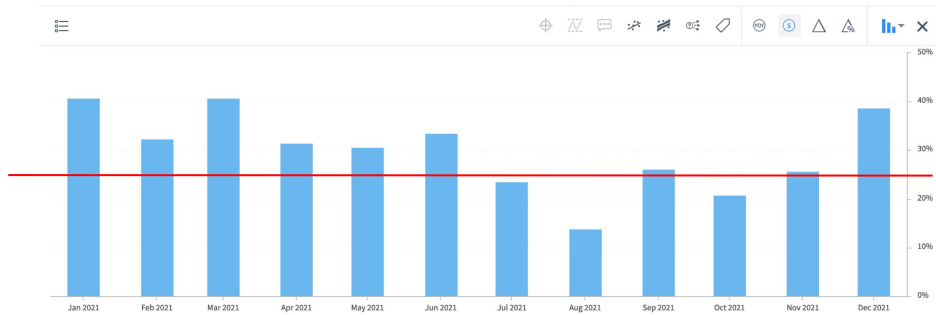
Overall:



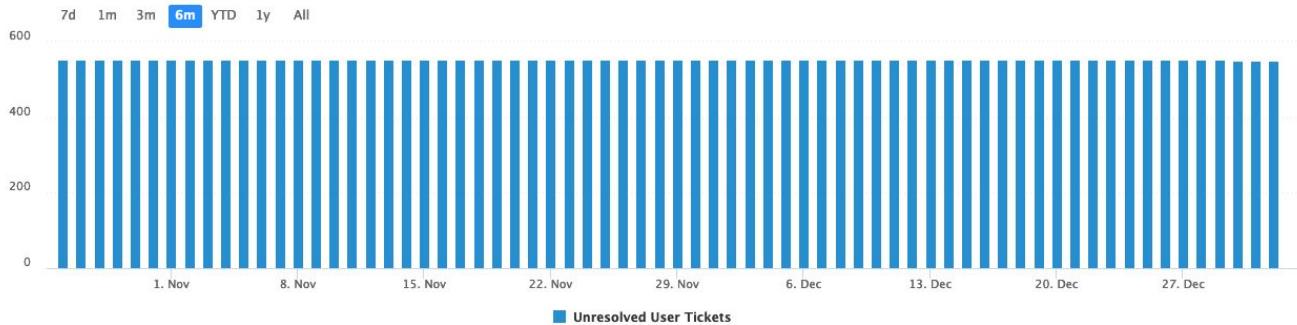
Last month's numbers - Dec



Capability metric:



Active/open tickets





Thank You



U.S. DEPARTMENT OF
ENERGY

Office of
Science

