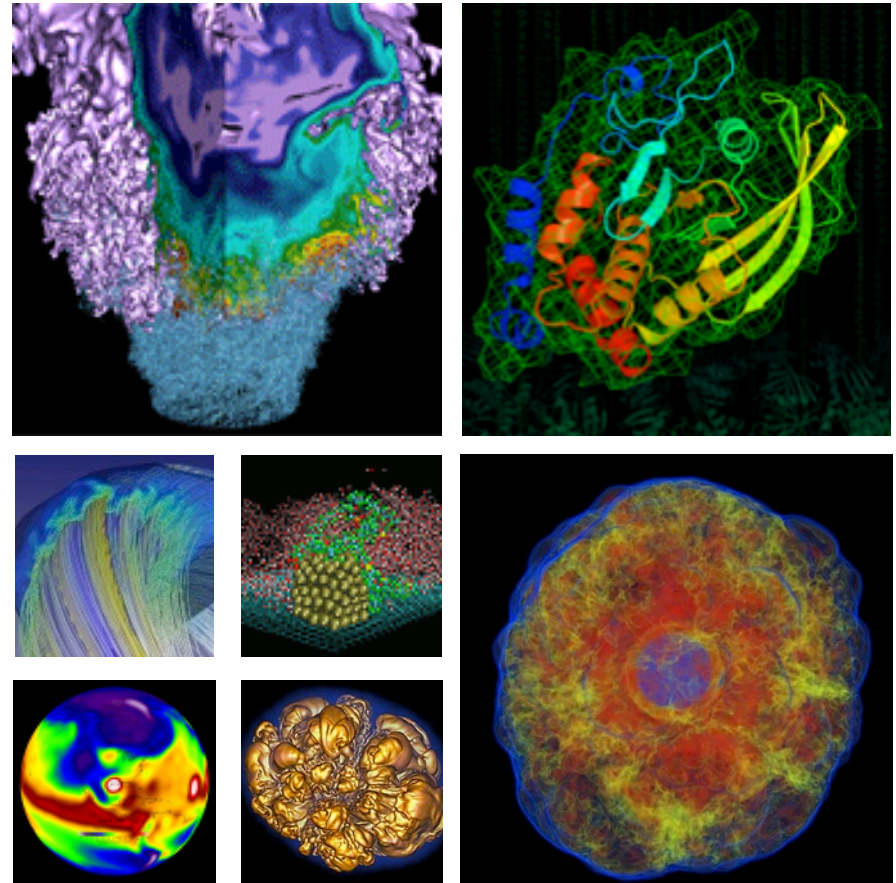


MPI usage at NERSC: Present and Future



Alice Koniges,
Brandon Cook, Jack Deslippe, Thorston Kurth, Hongzhang Shan

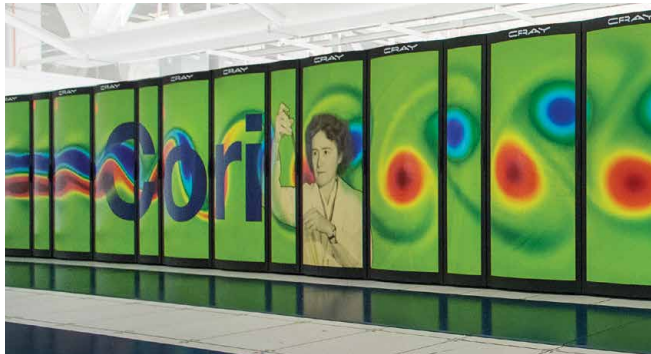
*National Energy Research Scientific Computing Center
Lawrence Berkeley National Laboratory, USA*



- 1 - September, 2016



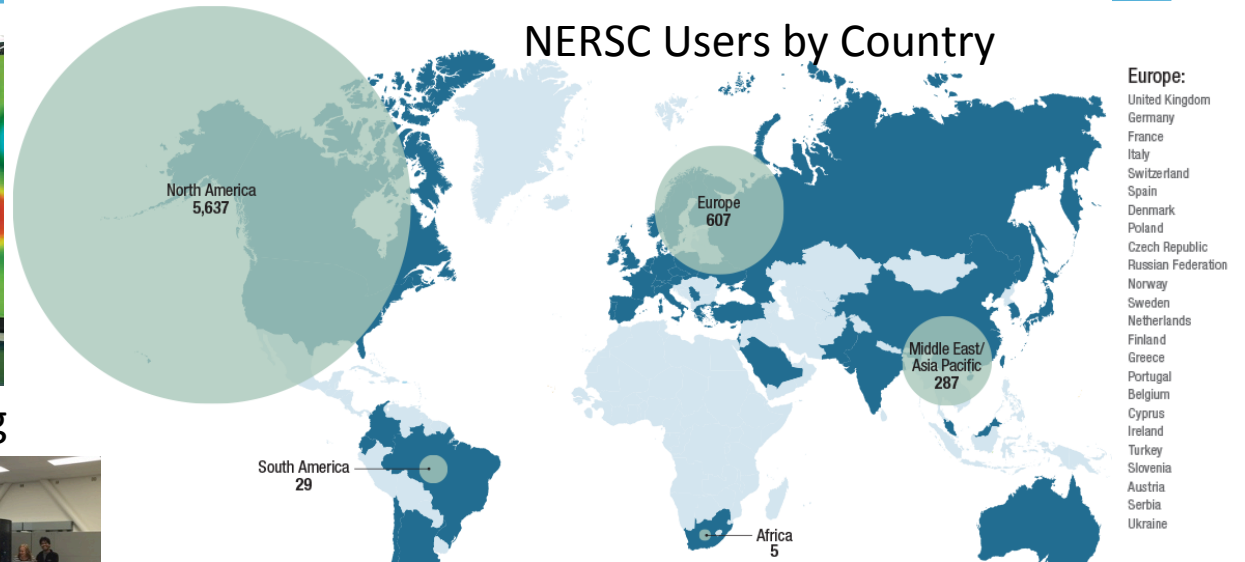
See the results of two user surveys – MPI at NERSC, and MPI Alternatives



Cray XC40 with Knights Landing



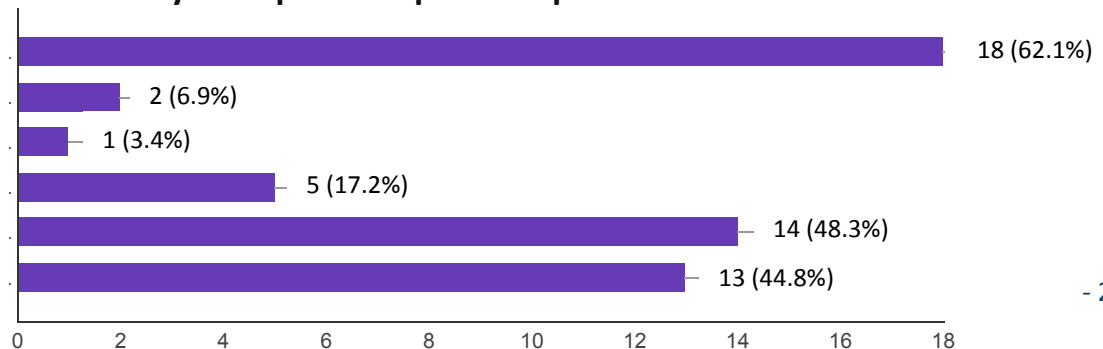
Cray XC30



For Example:

- Blocking MPI_Send / MPI_Recv
- Blocking MPI_Bsend / MPI_Recv
- Blocking MPI_Ssend / MPI_Recv
- Blocking MPI_SendRecv
- Nonblocking MPI_Isend and MPI_Recv
- Nonblocking MPI_Send and MPI_Irecv

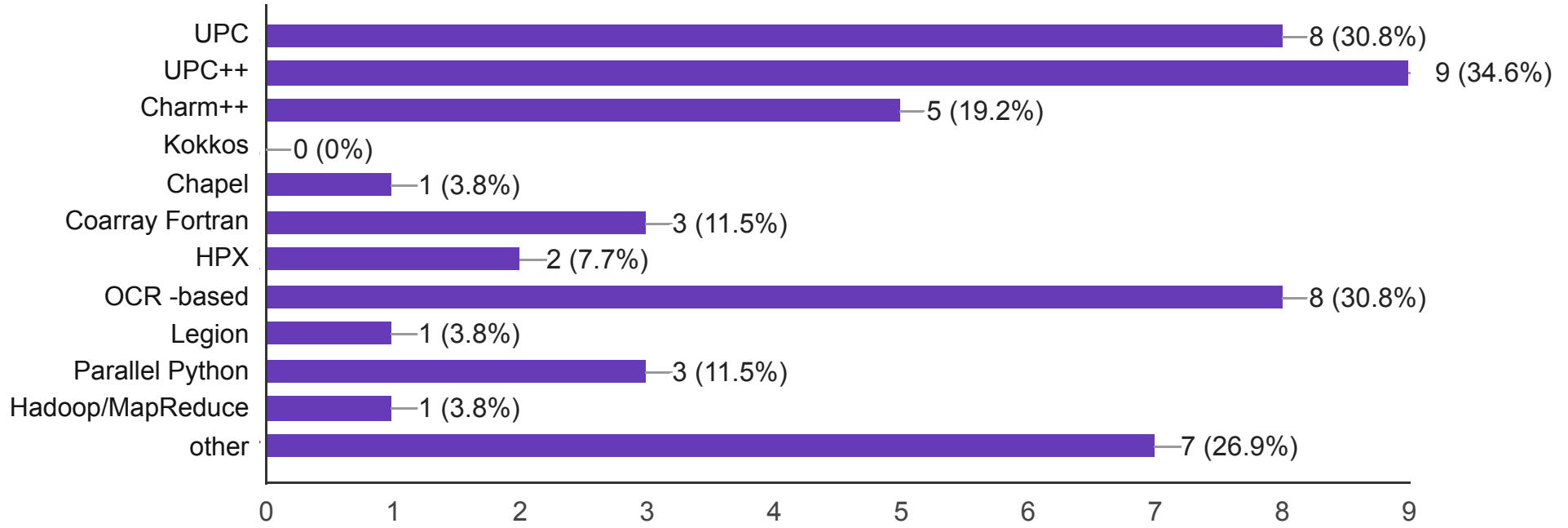
How do you implement point-to-point communication?



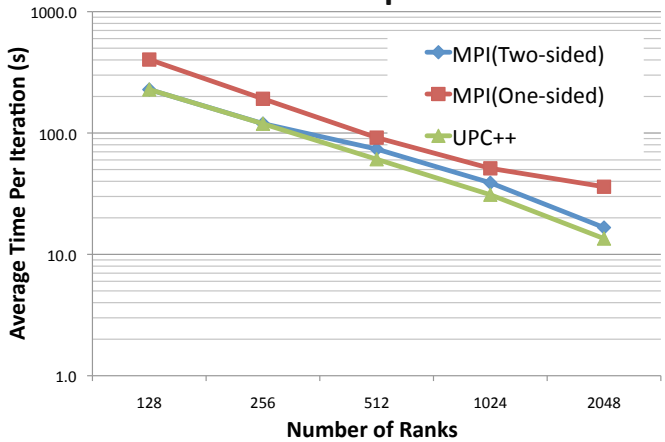
See what MPI alternatives people are using and some recent comparisons with MPI



Which parallel programming model(s)/approach(s) do you use?



AMR with UPC++ Compared to MPI



MiniGhost with HPX Compared to MPI

(40 variables - 20 timesteps - 200x200x200 - 10% reduction)

