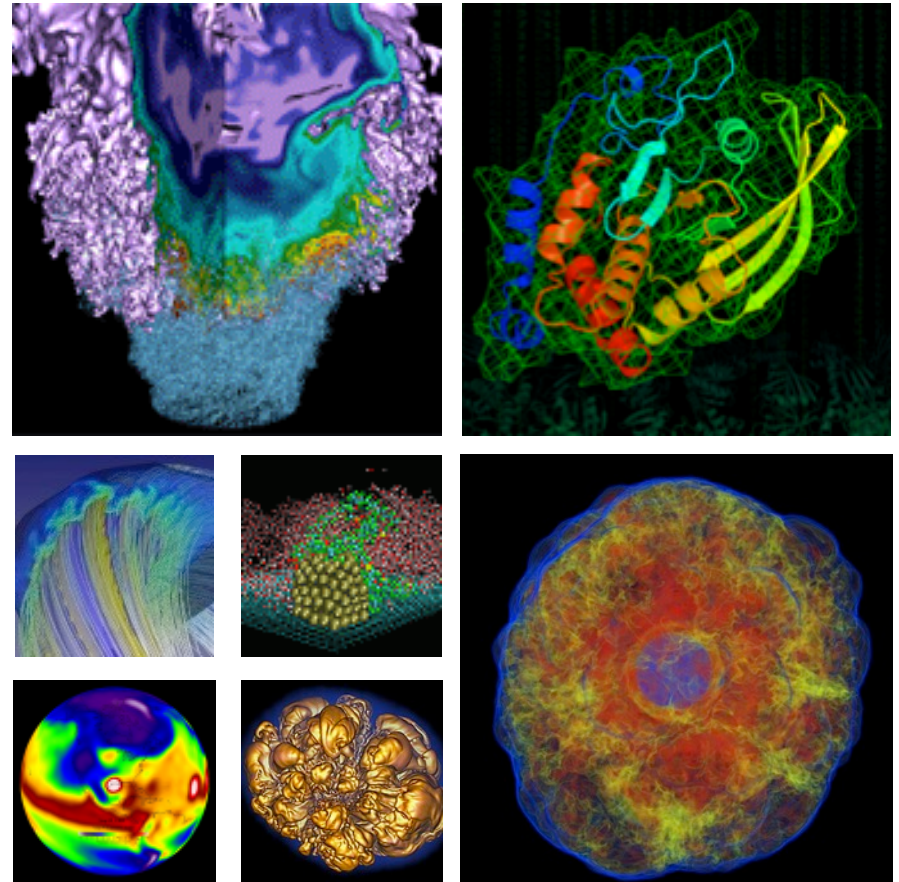


# Accounts and Allocations



**Clayton Bagwell**  
NERSC User Engagement Group

**NERSC New User Training**  
March 21, 2016

## There are two types of *accounts* at NERSC.

1. Your personal, private account
  - Associated with your *login* or *user name*
  - Provides *authentication* (personal identity) and *authorization* (which resources are accessible)
  - You can request an account on your own or your project's Principal Investigator (PI) or Proxy can request an account for you
  - Four primary account *roles*
    - PI, PI Proxy, Project Manager, User
2. A Project allocation account, or *repository* (aka *repo*)
  - Like a bank account you use to “pay” for computer time and archival storage
  - Managed by a Principal Investigator (PI) and (optionally) one or more PI Proxies.
  - All MPP users belong to at least one repo
  - An individual user may belong to more than one repository
    - But only one *default repo*

# NIM – NERSC Information Management



- **Web-based tool for user and repo management**
  - Check daily balance, change password, change login shell, update contact information, etc.

<https://nim.nersc.gov>



NERSC Information Management

Please sign in

NERSC Username:

NIM Password:

[Reset your NIM password.](#) | [Forgot your username?](#)

**Log In**

- **Drop-down menus**

USG TestAccount | [Logout](#) | [Change My Password](#)

Quick Search:



NIM Home	My Stuff ▼	Search ▼	Reports ▼	Actions ▼
----------	------------	----------	-----------	-----------

- Actions menu

- Change password, change default login shell, generate HPSS token, change default repo

- **Tabs**

Account Usage	Logins by Host	Unix Groups	Roles	Contact Info	Grid Certificates	SSH Keys
---------------	----------------	-------------	-------	--------------	-------------------	----------

USG TestAccount

# Account Usage



## Account Usage Summary

Resrc	Repo	User_id	Login	Login Type	User Hrs Used	User Charged	Avg CF	% Used	% Allowed	User Balance	Last Charged On	Base Repo?	Dflt Now?
MPP	mpccc	17931	dpturner	Authorized	6,219	6,178	1.0	0.1	10	993,822	08-SEP-13	Y	Y
MPP	matcomp	17931	dpturner	Authorized	1,430	1,430	1.0	0.0	1.0	228,570	05-SEP-13	N	N
MPP	usplanck	17931	dpturner	Authorized	447	447	1.0	0.0	5	384,553	03-SEP-13	N	N

- **All users must sign Computer User Agreement**
  - This is incorporated into the Self-Service account request form  
[https://nim.nerisc.gov/Computer\\_User\\_Agreement.php](https://nim.nerisc.gov/Computer_User_Agreement.php)
- **Password policies**
  - Must change password every 6 months
  - **Do not share passwords**
  - **Do not email passwords**
- **Account locked after 5 consecutive login failures**
  - Login to NIM to clear login failures
  - If you have forgotten your password, there is a link on the NIM login page that will lead you through the process of resetting a password
  - Call NERSC Account Support for more help

# Password Rules



- **Must contain**
  - *at least* eight characters
  - *at least* one each of:
    - UPPER-case letter
    - lower-case letter
    - numeric digit
    - “special” character (! @ \$ % ? & etc.)
- **Good**  
j#K01vz\$euP@!udls
- **Bad**  
P@ssw0rd
- **One possible method**
  1. computer security is very important for nersc users
  2. csivifnu
  3. C\$1v1fnu

- PIs apply through *Energy Research Computing Allocations Process (ERCAP)*
  - Part of NIM
  - Renew current projects annually, typically late summer
  - Science objectives, approach, and resource requirements
    - Computer time and archival storage space
  - Reviewed and awarded by DOE Science Offices
  - Most allocations are awarded in late Fall (December)
    - Allocation year starts in January
    - Small startup allocations are awarded throughout the year with DOE approval



- **Amount of MPP time available**
  - Approximately 3 billion MPP hours AY16
  - 80% to “DOE Base”
  - 10% to ASCR Leadership Computing Challenge (ALCC)
  - 10% to “Director’s Reserve”
    - NERSC Exascale Science Application Program (NESAP)
    - Startups, staff, Education, etc.

- **User**

- PI determines how much of the repo's MPP allocation each user can use
  - Either as a % of Total allocation or a fixed # of hours
- If user runs out of time
  - Submitted jobs go into the scavenger queue
  - Contact PI to increase percentage or # of hours

- **Repo**

- If repo runs out of time, PI should contact appropriate DOE Science Office Allocations Manager
  - Each Office typically holds a certain amount of time in reserve

# Resources



- Self Help

<http://www.nersc.gov/users/accounts/>

<http://www.nersc.gov/users/accounts/user-accounts/>

<http://www.nersc.gov/users/accounts/allocations/>

<https://nim.nersc.gov>

[https://nim.nersc.gov/nersc\\_account\\_request.php](https://nim.nersc.gov/nersc_account_request.php)

<http://www.nersc.gov/users/accounts/user-accounts/how-usage-is-charged/>

<http://www.nersc.gov/users/data-and-file-systems/hpss/hpss-charging/>

- NERSC Account Support

<http://help.nersc.gov>

[accounts@nersc.gov](mailto:accounts@nersc.gov)

1-800-66-NERSC, menu option 2 or 510-486-8612

# NERSC

Thank you.