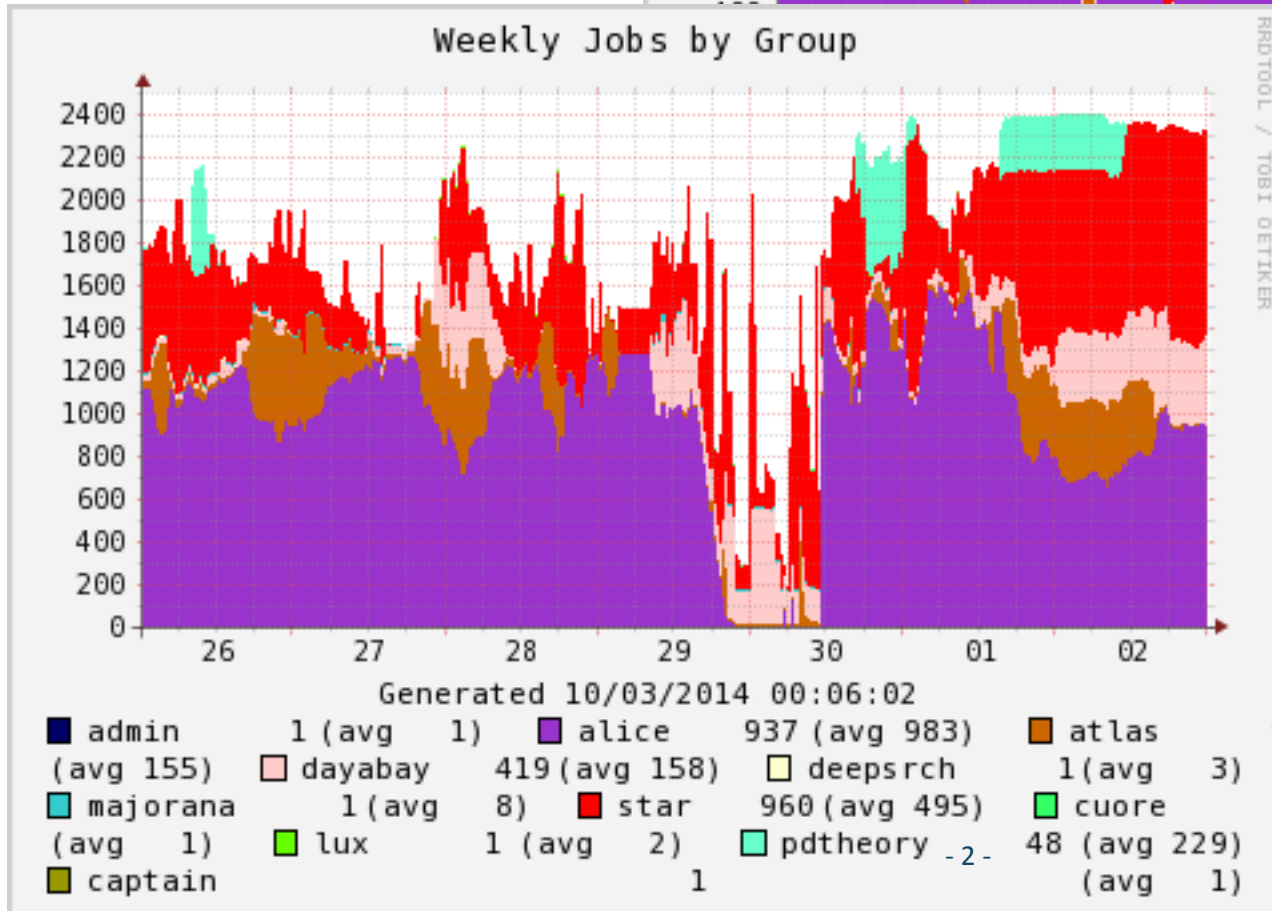
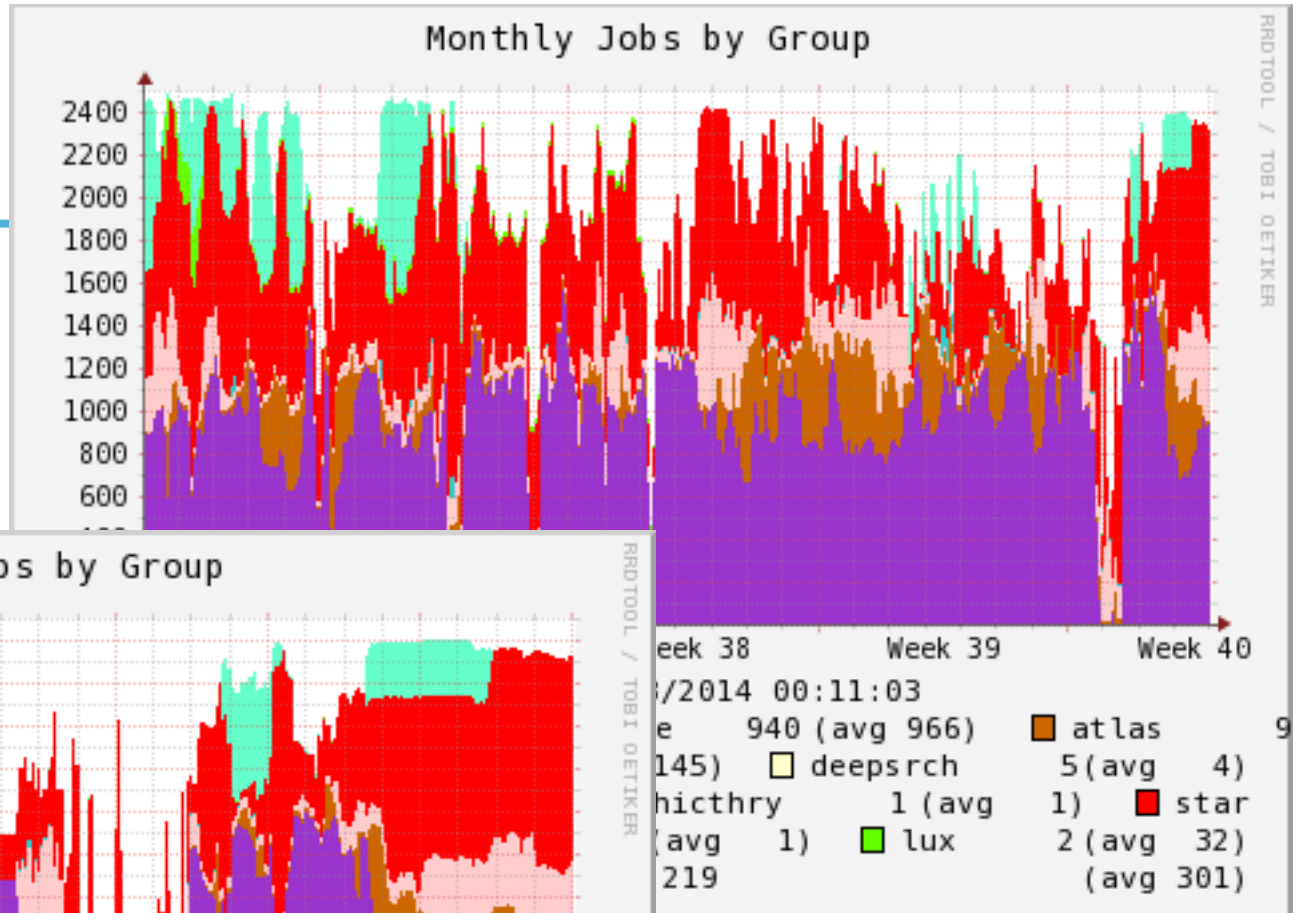


PDSF User Meeting

October 7, 2014

Lisa Gerhardt

Utilization



Past Outages



- **9/7/14 – 9/8/14: Eliza18, swap in new hardware**
- **9/30/14 (1 hour): Science Gateways**
- **10/5/14 (6 hours): Power event caused network issues on PDSF. Many jobs were lost**

Planned Outages



- **Shellshock**
 - Rolling reboot of all computes
 - Already in progress, should take about a week to finish
 - Rolling reboot of interactive nodes on morning of 10/9
 - Should take half a day, will broadcast a message with 10 minutes of warning before a node is taken offline
 - Just log back into pdsf.nersc.gov to get a fresh node

U-Hunting



- Old PDSF homes are mounted read only
- Need to be removed eventually (no date yet)
- Any reference to “/u/” or “/home” will fail once this happens
- Please replace these with “\$HOME” or /global/homes/....
- The entire SL53 software stack is located on old PDSF homes
 - Must be relocated
 - Don’t expect any issues, but please let us know if something stops working

Topics from the Users

