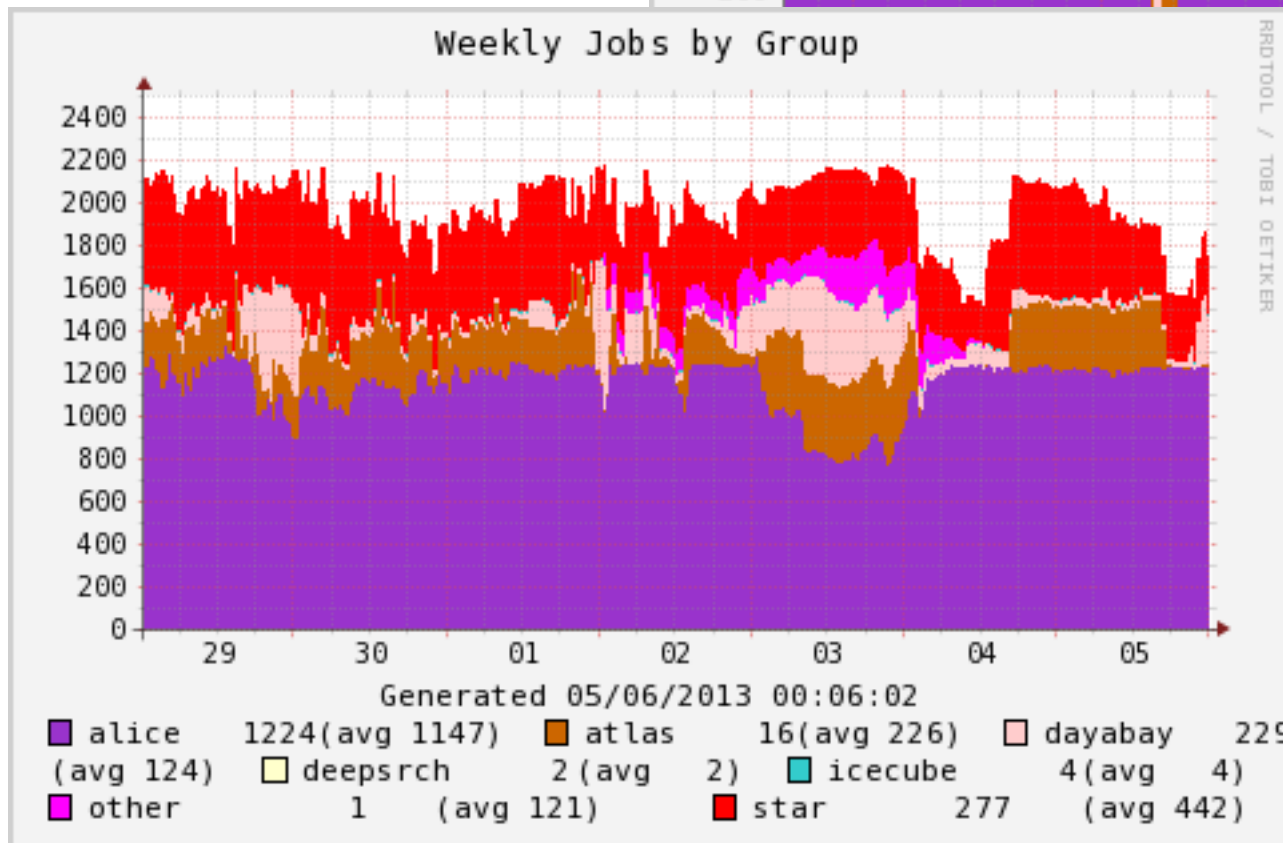
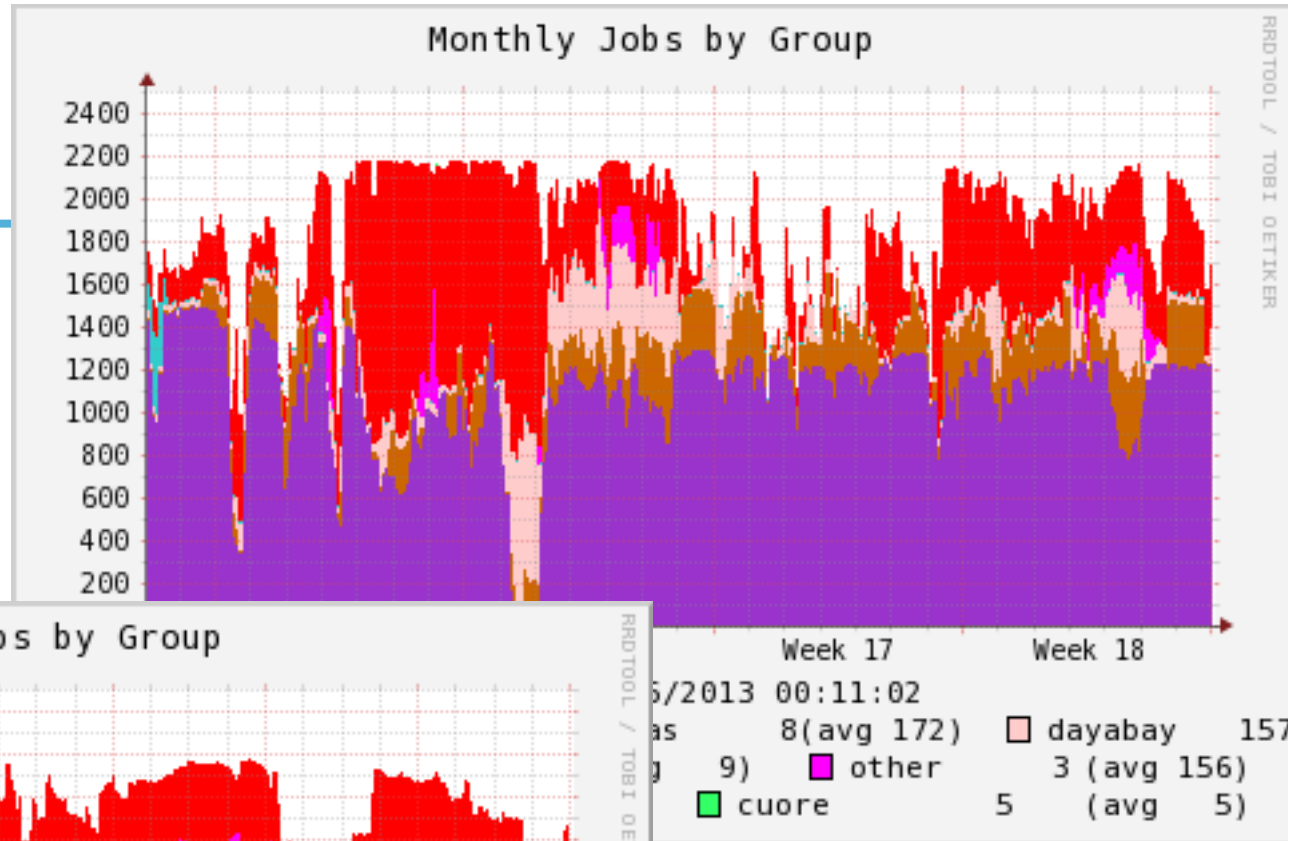


PDSF User Meeting

May 7, 2013

Lisa Gerhardt

Utilization



Past Outages



- Some short HPSS outages (~1/2 hour)

Planned Outages



- May 8th rolling upgrade of compute nodes to new kernel/GPFS
- Downtime postponed to May 21st

Other Topics from PDSF Staff



- I started May 1st
- Thanks to Yushu for all his work
 - He will continue to call in
- I would like some time to meet with you individually to discuss PDSF once I get settled in
- Steering committee meeting, will talk with Craig about a good time for next meeting.

Topics from the Users



- From last meeting:
- **Mike:**
 - Eliza11 is on PDSF1/debug queue for testing. Works fine for now. Iwona will mount it to all nodes in couple days.
 - Bestman fixed
- **Jeff:**
 - Follow up with Ernst's student
 - Dot files
 - ALICE: Series of upgrades coming after the May 8 downtime. (SL6, xrootd storage, etc)
 - Need discussion about Disk replacements strategy for xrootd (find out disk outage rate vs. age. Search pd01/02 in tickets. Ping Lisa)