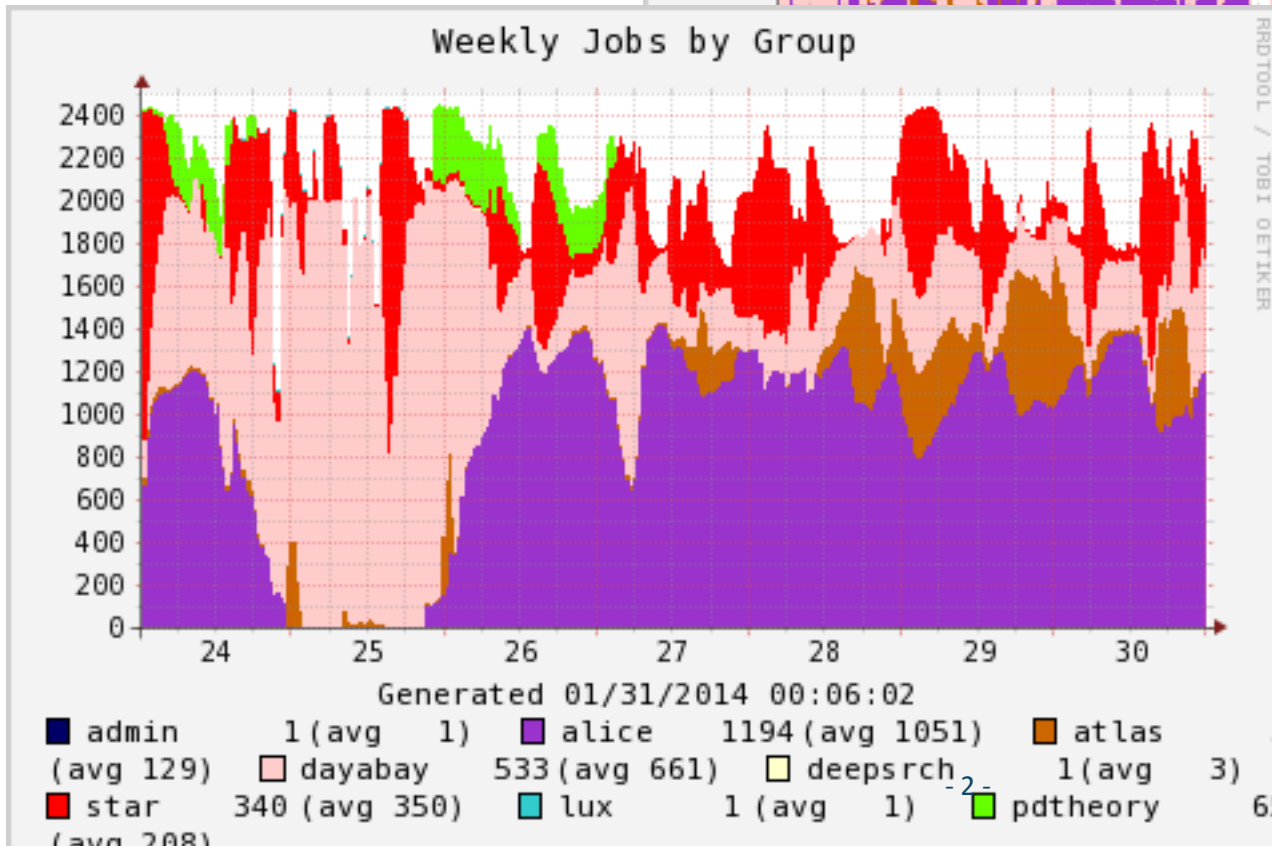
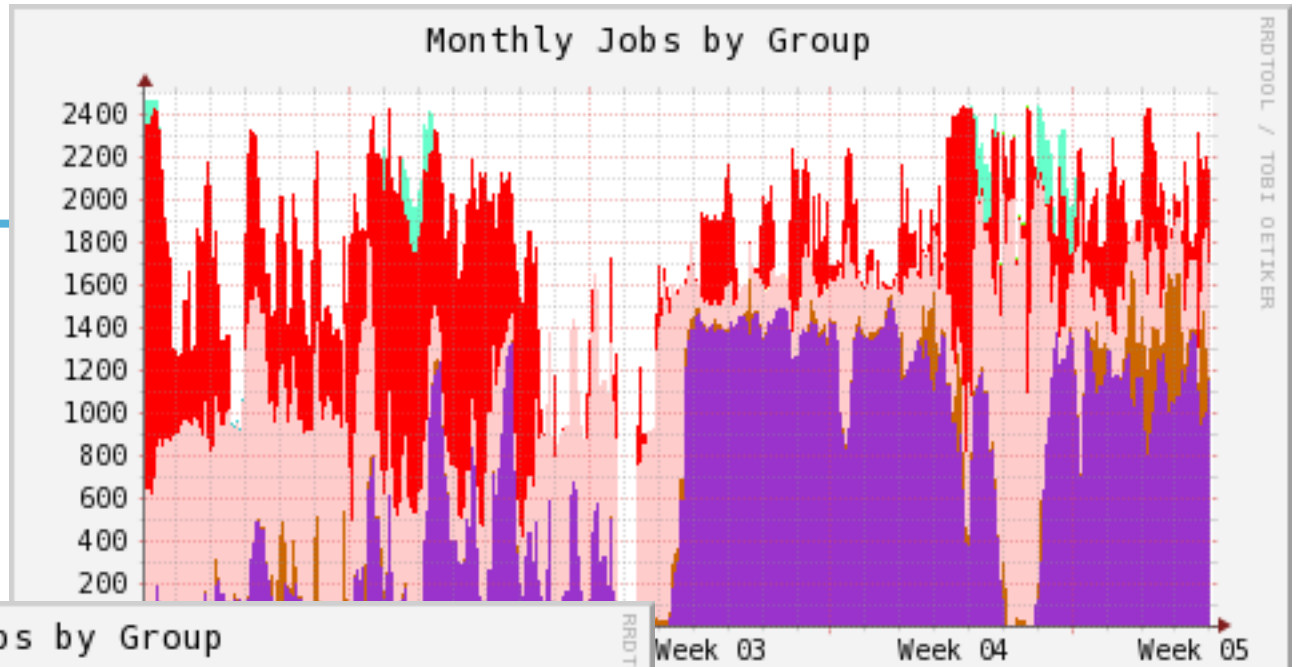


PDSF User Meeting

February 4, 2014

Lisa Gerhardt

Utilization



RRRTOOL / TOBI OETIKER

Week 03 /2014 00:11:03

1155 (avg 741)	atlas	16
580)	deepsrch	2 (avg 4)
tar 440 (avg 554)	lux	1
186	(avg 183)	



Past Outages



- Eliza2 (12/27 – 1/10): Multiple disk failures
- Retired: Eliza 7 on 1/17
- Status of elizas:

Disk Vault	Experiments	Disk Space (TB)	Directories	Status
eliza3	Star	39	starprod	Decommissioned
eliza7	Daya Bay	24	dayabay	Retired, readable on pdsfdtn2
eliza8	Alice, RNC	20	alice, rnc	Retired
eliza9	Star	39	starprod	Decommissioned
eliza10	Kamland, Majorana, SNO	20	kamland majorana, sno	Retired, readable on pdsfdtn2

<http://www.nersc.gov/users/computational-systems/pdsf/hardware-configuration/eliza-file-systems/>

Planned Outages



- **February 11 – All day: Global NERSC outage. PDSF software and security updates, NERSC network, project file system**
 - IO resources set to zero 2/10 6:00 pm, users can run jobs without IO resources (just this once!) over the evening, but **ALL** jobs will be killed at 8:00 am on 2/11
 - Expected return at 8:00 pm

Other Topics from PDSF Staff



- **New interactives coming online this week**
 - Individually accessed with pdsf6, pdsf7, pdsf8
 - Can still get to old interactives with ssh pdsf[1-4]
- **Global Scratch will be mounted shortly after maintenance**

–PURGED every 12 weeks

- Default quota of 20 TB and 4 M inodes
- Only available on the Mendel compute nodes
- Must run with `-l gscratch=1` to get steered to the right nodes

Other Topics from PDSF Staff Con't



- **NERSC home directory testing**
 - Homes warranty extended until NERSC move
 - One possibility is to switch to NERSC homes
 - Will be available for testing in the next few weeks
 - Looking for volunteers for testing

Topics from the Users

