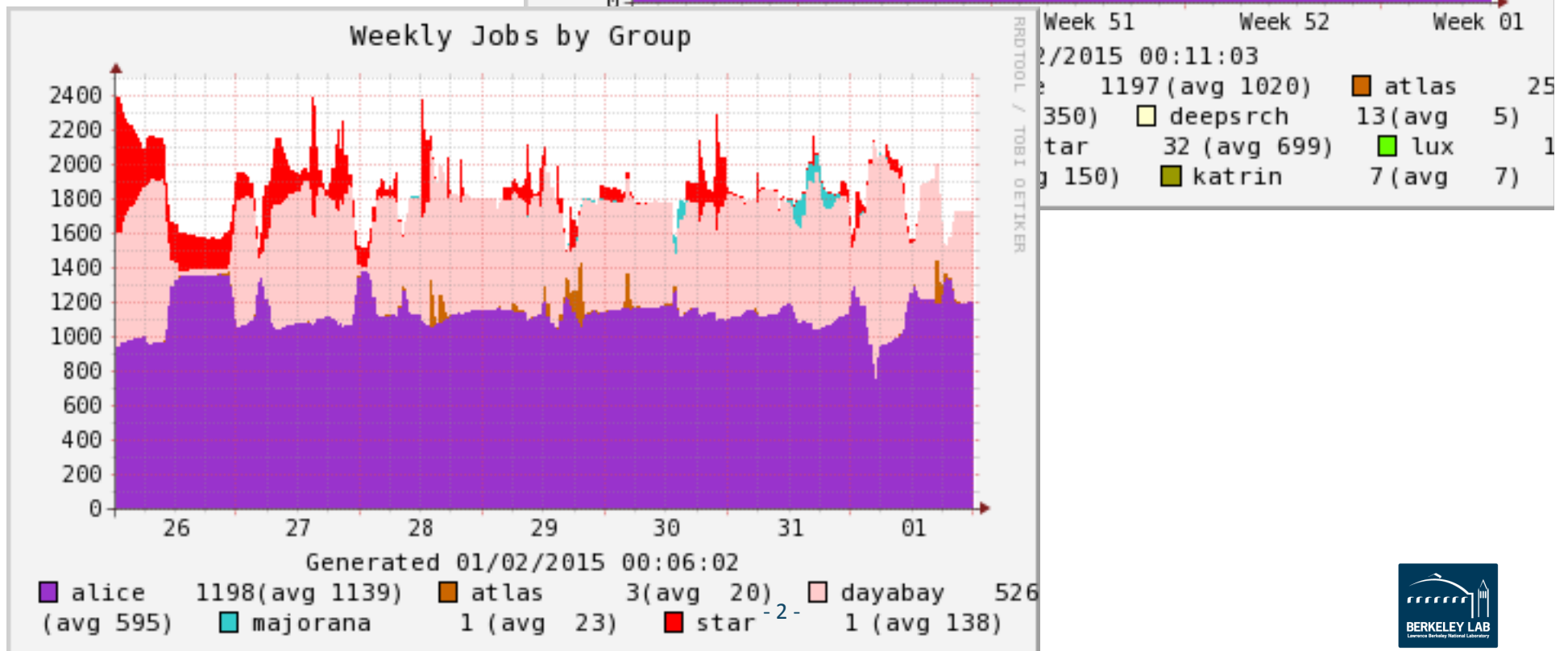
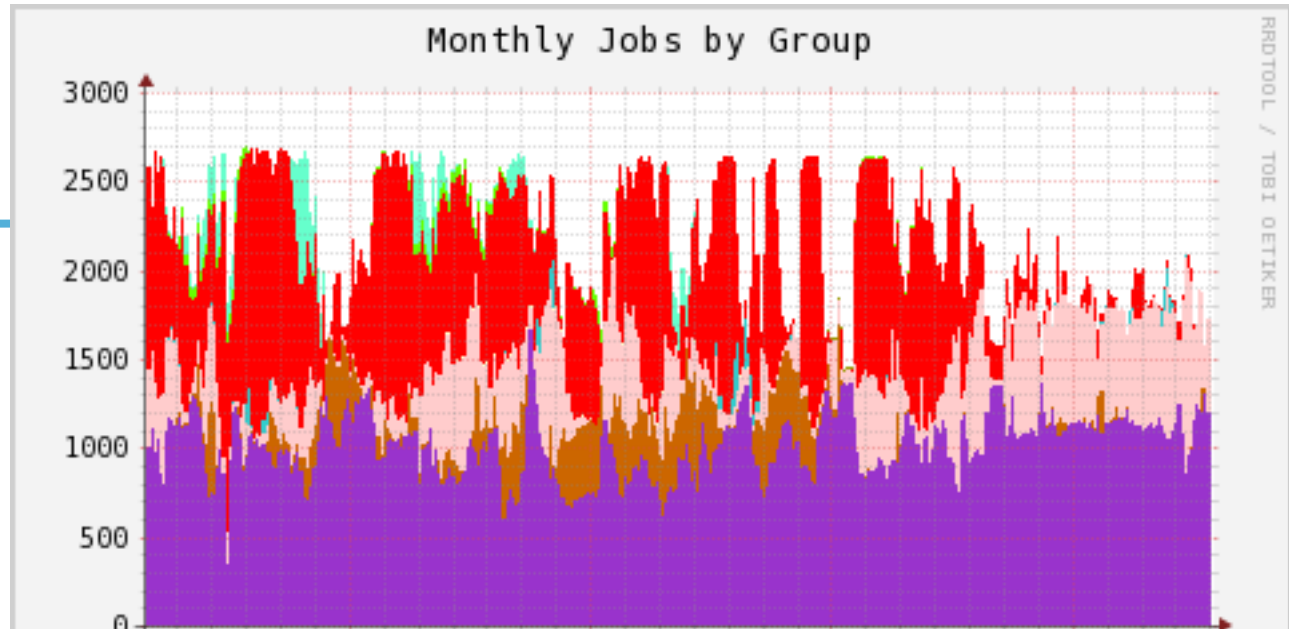


PDSF User Meeting

January 6, 2015

Lisa Gerhardt

Utilization



Past Outages



- None

Planned Outages



- **February 10th: All day maintenance**

Retiring SL53?



- Like to retire SL53 at some point
- Who still uses it?
- What is missing from SL6x?

Topics from the Users



U-Hunting



- Old PDSF homes are mounted read only
- Need to be removed eventually (no date yet)
- Any reference to “/u/” or “/home” will fail once this happens
- Please replace these with “\$HOME” or /global/homes/....
- The entire SL53 software stack is located on old PDSF homes
 - Must be relocated
 - Don’t expect any issues, but please let us know if something stops working