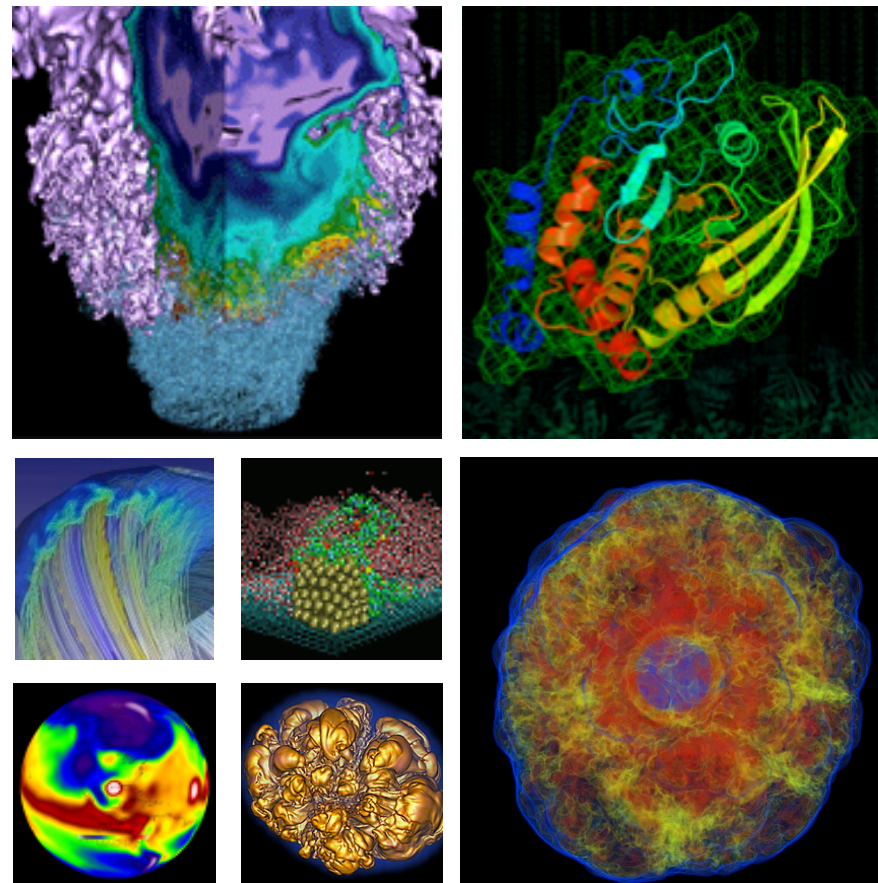


Automatic Library Tracking Database at NERSC



Zhengji Zhao

ALTD Review Meeting at NERSC
October 8, 2014

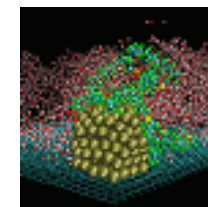
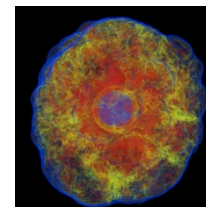
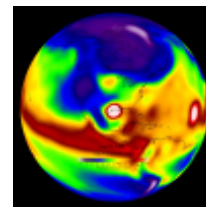
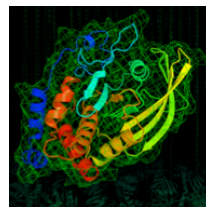
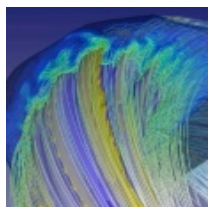
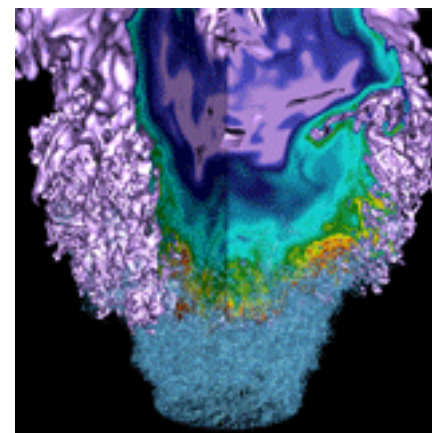
Agenda



- **ALTD overview**
- **Applications of ALTD at NERSC**
- **Implementation and evolution of ALTD at NERSC**
- **Your suggestions for Improvements?**

Goal: Gather inputs from all parties so to improve the ALTD implementation and deployment at NERSC

ALTD overview



NERSC **40** YEARS
at the
FOREFRONT
1974-2014



U.S. DEPARTMENT OF
ENERGY

Office of
Science



Automatic library tracking database infrastructure



- **Imported from NICS June, 2012**
 - Altd module is loaded in the USG shell startup file
- **ALTD –the ld and aprun wrappers**
 - Ld wrapper –records the linkage info and save it in a database table: username, linkeline, link date, tag_id, etc.
 - Aprun (mpirun) wrapper- record job info and save it in a database table: username, jobid, executable name, run date, tag_id for the executable
- **ALTD provides library and application usage statistics**

ALTD tables



```

+-----+-----+-----+
| linking_int | shaline | linkline |
+-----+-----+-----+
| 187615 | a1bd90a030875faffd003ccecfaedfd9a84bfc3a | gtc /usr/lib64/gcc/x86_64-suse-linux/4.3/../../../../lib64/crt1.o /usr/lib64/gcc/x86_64-suse-linux/4.3/../../../../lib64/crti.o
|
| /usr/lib64/gcc/x86_64-suse-linux/4.3/crtbeginT.o /opt/intel/composer_xe_2013_sp1.2.144/compiler/lib/intel64/for_main.o module.o main.o function.o setup.o restart.o ...
| /cray/mpt/7.0.0/gni/mpich2-intel/140/lib/libfpich.a /usr/common/usg/darshan/2.3.0/lib/libdarshan-mpi-io.a /usr/common/usg/darshan/2.3.0/lib/libdarshan-posix.a
| /usr/common/usg/darshan/2.3.0/lib/libdarshan-stubs.a /usr/lib64/gcc/x86_64-suse-linux/4.3/../../../../lib64/libz.a
| /opt/cray/petsc/3.4.4.0/real/INTEL/140/sandybridge/lib/libcraypetsc_intel_real.a /opt/intel/composer_xe_2013_sp1.2.144/compiler/lib/intel64/libimf.a
| /opt/cray/tpsl/1.4.1/INTEL/140/sandybridge/lib/libHYPRE_intel.a /opt/cray/tpsl/1.4.1/INTEL/140/sandybridge/lib/libdmumps_intel.a
| /opt/cray/tpsl/1.4.1/INTEL/140/sandybridge/lib/libscandials_cvode_intel.a /opt/cray/tpsl/1.4.1/INTEL/140/sandybridge/lib/libscandials_nvecparallel_intel.a
| /opt/cray/tpsl/1.4.1/INTEL/140/sandybridge/lib/libsuperlu_dist_intel.a /opt/cray/tpsl/1.4.1/INTEL/140/sandybridge/lib/libsuperlu_intel.a
| /opt/cray/tpsl/1.4.1/INTEL/140/sandybridge/lib/libmumps_common_intel.a /opt/cray/tpsl/1.4.1/INTEL/140/sandybridge/lib/libptscotch_intel.a
| /opt/cray/tpsl/1.4.1/INTEL/140/sandybridge/lib/libpard_intel.a /opt/cray/tpsl/1.4.1/INTEL/140/sandybridge/lib/libptscotch_intel.a
| /opt/cray/tpsl/1.4.1/INTEL/140/sandybridge/lib/libparmetis_intel.a /opt/cray/tpsl/1.4.1/INTEL/140/sandybridge/lib/libscotch_intel.a
| /opt/cray/tpsl/1.4.1/INTEL/140/sandybridge/lib/libptscotcherr_intel.a /opt/cray/tpsl/1.4.1/INTEL/140/sandybridge/lib/libmetis_intel.a
| /usr/lib64/gcc/x86_64-suse-linux/4.3/../../../../lib64/libpthread.a /usr/lib64/gcc/x86_64-suse-linux/4.3/../../../../lib64/librt.a
| /usr/lib64/gcc/x86_64-suse-linux/4.3/../../../../lib64/libthread.a /opt/cray/atp/1.7.3/lib/libAtpSigHandler.a /opt/cray/atp/1.7.3/lib/libAtpSigCommData.a
| /usr/lib64/gcc/x86_64-suse-linux/4.3/../../../../lib64/libpthread.a /opt/cray/libsci/13.0.0/INTEL/140/sandybridge/lib/libsci_intel_mpi_mp.a
| /opt/intel/composer_xe_2013_sp1.2.144/compiler/lib/intel64/libimf.a /opt/cray/libsci/13.0.0/INTEL/140/sandybridge/lib/libsci_intel_mp.a
| /opt/intel/composer_xe_2013_sp1.2.144/compiler/lib/intel64/libimf.a /opt/intel/composer_xe_2013_sp1.2.144/compiler/lib/intel64/libiomp5.a
| /opt/cray/netcdf/4.3.2/INTEL/140/lib/libnetcdf.a /usr/lib64/gcc/x86_64-suse-linux/4.3/../../../../lib64/libpthread.a /opt/cray/netcdf/4.3.2/INTEL/140/lib/libnetcdf.a
| /opt/cray/hdf5/1.8.13/INTEL/140/lib/libhdf5_hl.a /opt/cray/hdf5/1.8.13/INTEL/140/lib/libhdf5.a /usr/lib64/gcc/x86_64-suse-linux/4.3/../../../../lib64/libz.a
| /usr/lib64/gcc/x86_64-suse-linux/4.3/../../../../lib64/libdl.a /opt/intel/composer_xe_2013_sp1.2.144/compiler/lib/intel64/libimf.a
| /opt/cray/mpt/7.0.0/gni/mpich2-intel/140/lib/libmpich_intel.a /opt/cray/ugni/5.0-1.0502.9037.7.26.ari/lib64/libugni.a
| /usr/lib64/gcc/x86_64-suse-linux/4.3/../../../../lib64/libpthread.a /opt/cray/pmi/5.0.4-1.0000.10161.132.4.ari/lib64/libpmi.a
| /opt/cray/mpt/7.0.0/gni/mpich2-intel/140/lib/libmpl.a /usr/lib64/gcc/x86_64-suse-linux/4.3/../../../../lib64/libpthread.a
| /opt/cray/alps/5.2.1-2.0502.8712.10.32.ari/lib64/libalpslli.a /opt/cray/wlm_detect/1.0-1.0502.51217.1.1.ari/lib64/libwlm_detect.a
| /opt/cray/ugni/5.0-1.0502.9037.7.26.ari/lib64/libugni.a /opt/cray/alps/5.2.1-2.0502.8712.10.32.ari/lib64/libalpsutil.a
| /opt/cray/xpmem/0.1-2.0502.51169.1.11.ari/lib64/libxpmem.a /opt/cray/udreg/2.3.2-1.0502.8763.1.11.ari/lib64/libudreg.a
| /opt/intel/composer_xe_2013_sp1.2.144/compiler/lib/intel64/libifport.a /opt/intel/composer_xe_2013_sp1.2.144/compiler/lib/intel64/libifcoremt.a
| /opt/intel/composer_xe_2013_sp1.2.144/compiler/lib/intel64/libimf.a /opt/intel/composer_xe_2013_sp1.2.144/compiler/lib/intel64/libsvml.a
| /opt/intel/composer_xe_2013_sp1.2.144/compiler/lib/intel64/libirc.a /usr/lib64/gcc/x86_64-suse-linux/4.3/../../../../lib64/libpthread.a
| /usr/lib64/gcc/x86_64-suse-linux/4.3/../../../../lib64/libc.a /usr/lib64/gcc/x86_64-suse-linux/4.3/../../../../lib64/libgcc.a
| /usr/lib64/gcc/x86_64-suse-linux/4.3/../../../../lib64/libc.a /usr/lib64/gcc/x86_64-suse-linux/4.3/../../../../lib64/libc.a
| /usr/lib64/gcc/x86_64-suse-linux/4.3/crtend.o /usr/lib64/gcc/x86_64-suse-linux/4.3/../../../../lib64/crtn.o

```

| tag_id | linkline_id | username | link_date |
|--------------------------------------|-------------|----------|------------|
| 19520da0-1697-4d61-bfba-54f02e482287 | 187615 | wlzhang | 2014-08-07 |
| 8f625c65-1940-4070-a951-d61a308c59b7 | 420039 | seeyc | 2014-08-07 |
| bf6d83b9-776c-42e9-a195-8806342e3967 | 184391 | scoh | 2014-08-07 |

| run_inc | tag_id | executable | username | run_date | job_launch_id | build_machine |
|---------|--------------------------------------|--|----------|------------|---------------|---------------|
| 1001241 | 19520da0-1697-4d61-bfba-54f02e482287 | /scratch1/scratchdirs/wlzhang/testing/tae5/exec | wlzhang | 2014-08-07 | 1532879 | edison |
| 1001542 | 8f625c65-1940-4070-a951-d61a308c59b7 | /global/homes/s/seeyc/cti0ld/bin/postpro.exe | seeyc | 2014-08-07 | 1532892 | edison |
| 1001490 | bf6d83b9-776c-42e9-a195-8806342e3967 | /global/homes/s/scoh/compile/epw/ver_3.0.0_fix_ws/save_bin/epw.x | scoh | 2014-08-07 | 1532895 | edison |

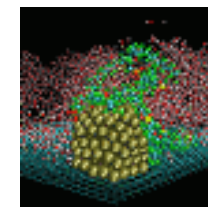
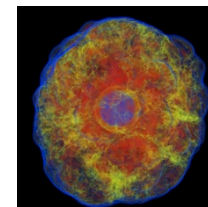
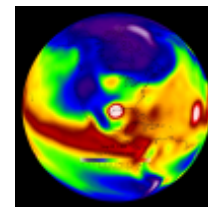
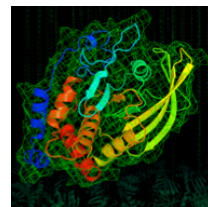
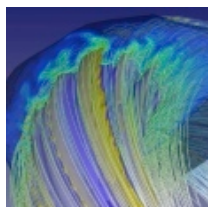
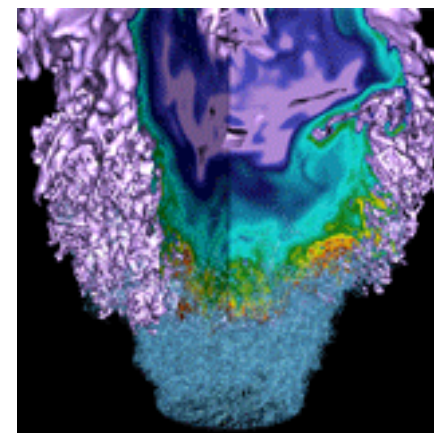


ALTD provides info about



- **By whom and when what application was compiled**
- **What libraries (and the exact versions) were used**
- **Which compiler (and version) was used**
- **How the application was linked (dynamically or statically),**
- **On which system the binary was built**
- **By whom and when the binary was run**

Applications of ALTD at NERSC



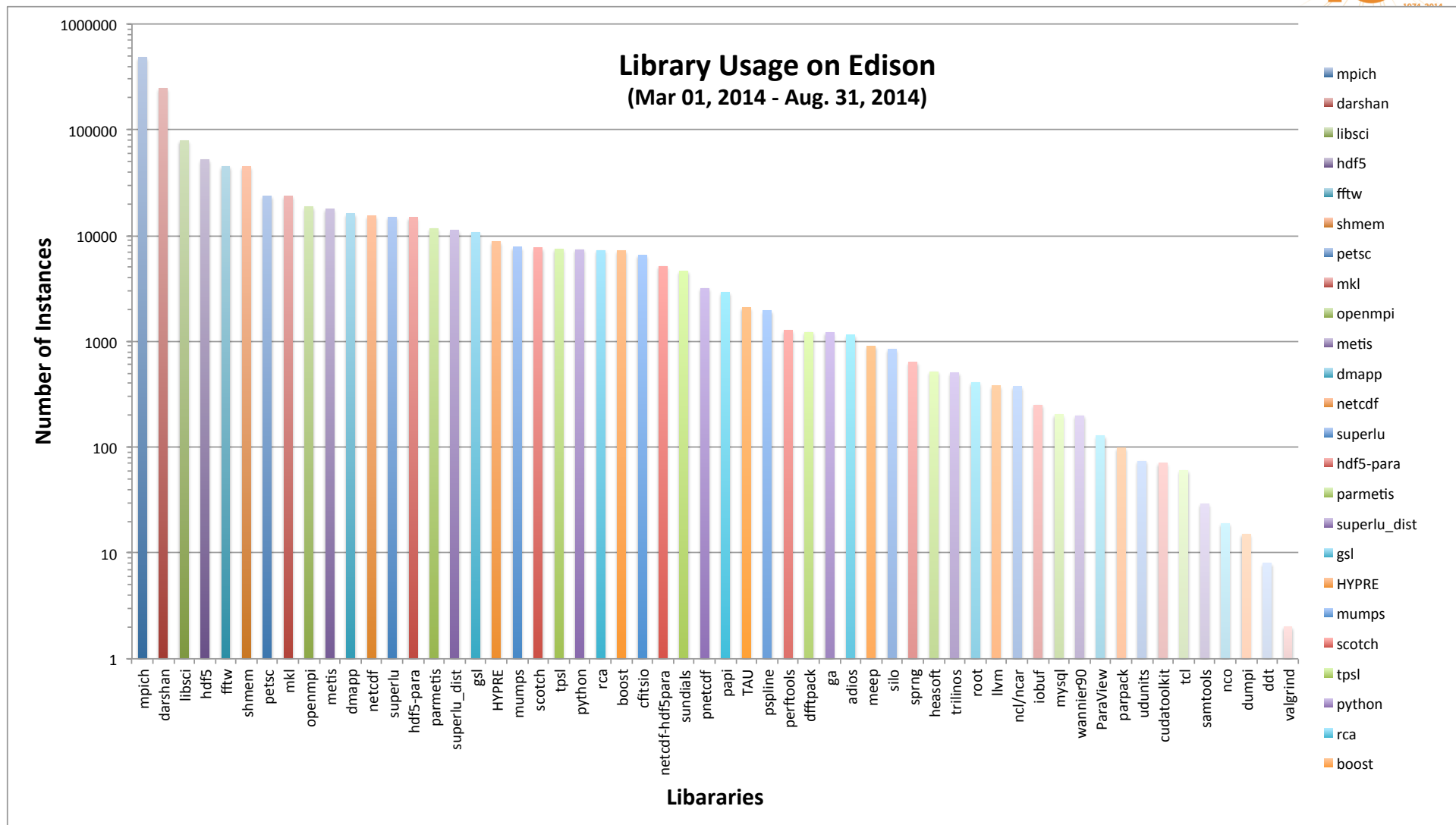
NERSC **40** YEARS
at the
FOREFRONT
1974-2014

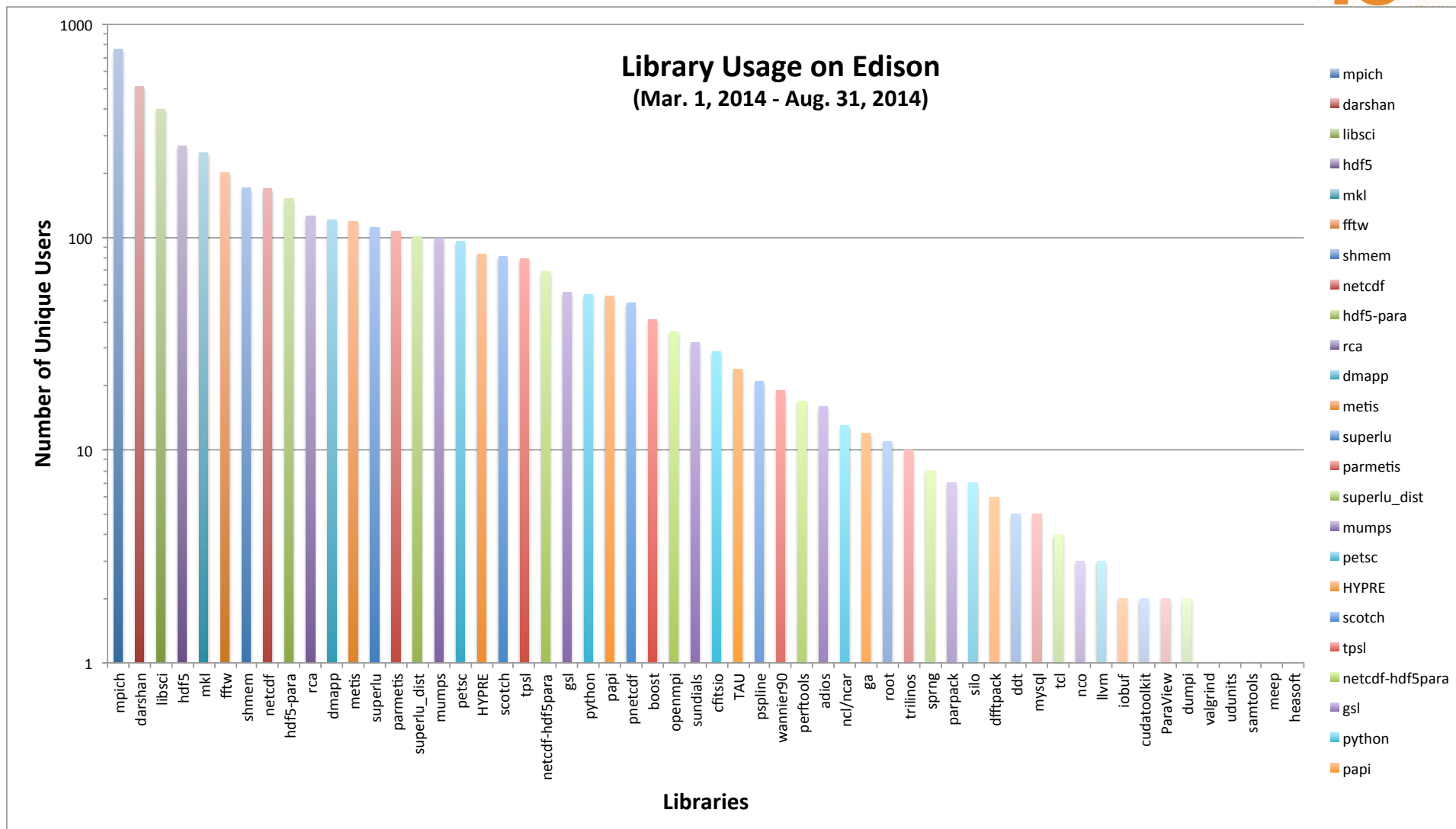


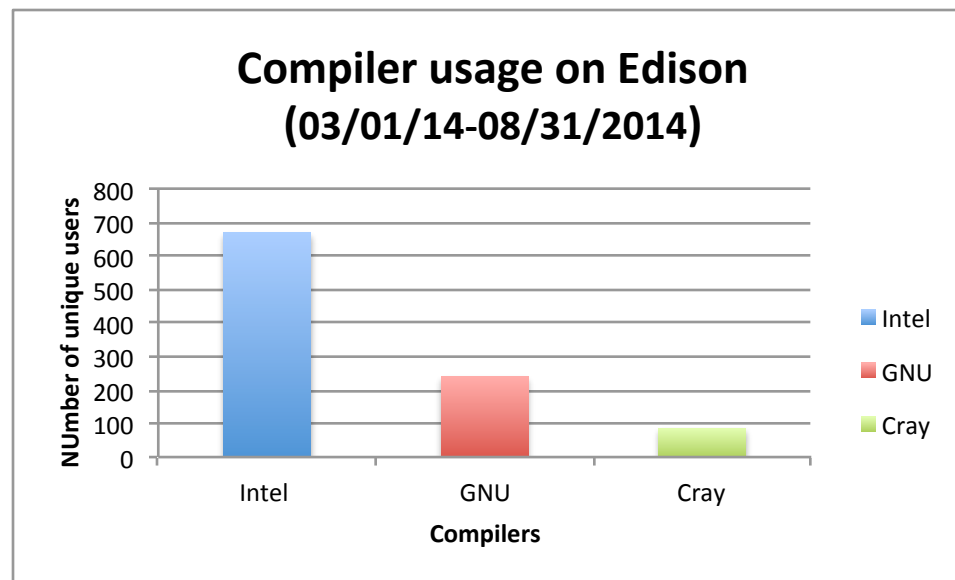
U.S. DEPARTMENT OF
ENERGY

Office of
Science







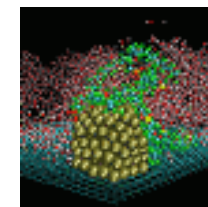
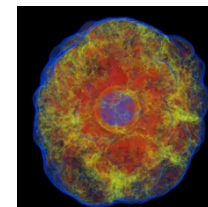
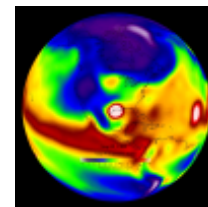
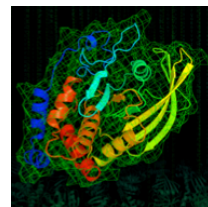
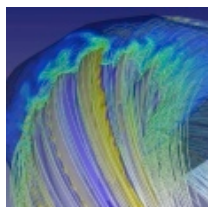
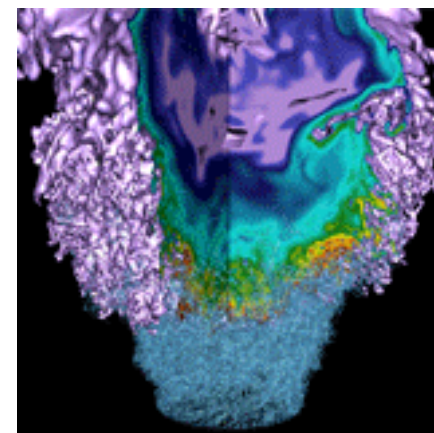


Some use cases



- **Workload analysis (provides useful info for the procurement)**
- **I/O library developers wanted to know their library usage**
- **System software usage – predict the software requirement for exascale systems**
- **Help recovering build environment for users**
- **Fine-grained application usage – useful to the developers to focus optimization effort for next generation machine**

ALTD Implementation and its evolvment at NERSC



NERSC **40** YEARS
at the
FOREFRONT
1974-2014



U.S. DEPARTMENT OF
ENERGY

Office of
Science

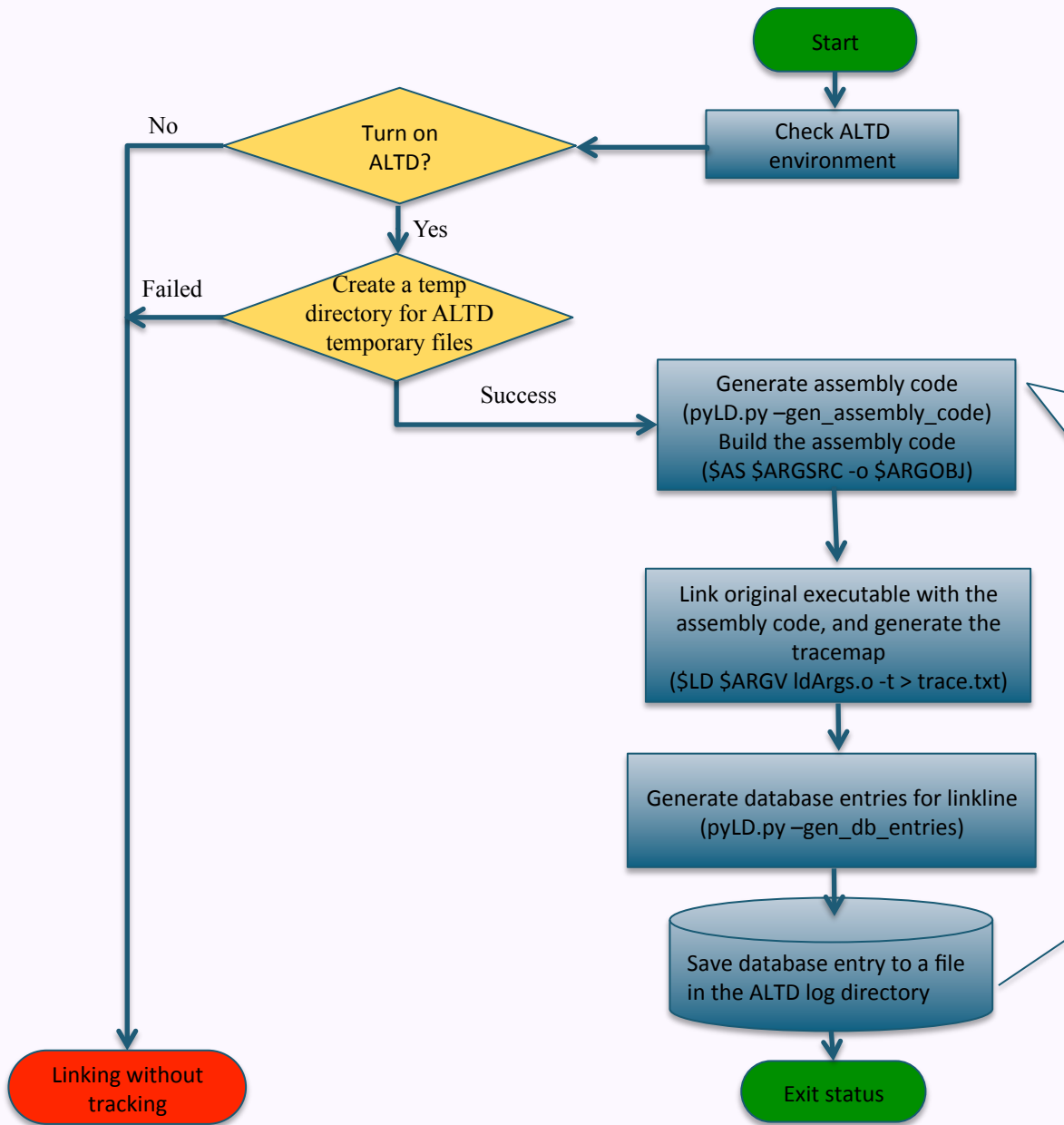


Problems encountered with ALTD at NERSC



- **The original ALTD did a live access to the database server at each invocation of the `ld` and the `aprun` commands, it caused too many simultaneous connections to the database server, and made the server fail to function normally**
 - This problem was addressed by asynchronously capturing the data and the database access.
 - The asynchronous `aprun` wrapper was in production in June, 2013
 - The asynchronous `ld` wrapper, required to use the `uuid` to replace the original integer `id` to uniquely track the generated executables, was in production in Feb, 2014.
- **CSG/Cray staff had a concern about the `ld` command being owned by a non-root user and residing in the global file system external to the system**
 - This was addressed by moving `altd` installation from `/usr/common/usg` (GPFS file system) to Lustre file systems (`/scratch1`, or `/scratch`, local to each machine)
 - As a result, ALTD may block the user logins to the system where there were Lustre file system issues.

ALTD ld wrapper follow chart



ALTD ld wrapper:

ld – a bash script that wraps the /usr/bin/ld
 pyLD.py – a python script that the ld wrapper calls
 ld_db.sh – a bash shell script that updates the database

Assembly code ldArgs.s:

```

.section .altd
.asciz "ALTD_Link_Info"

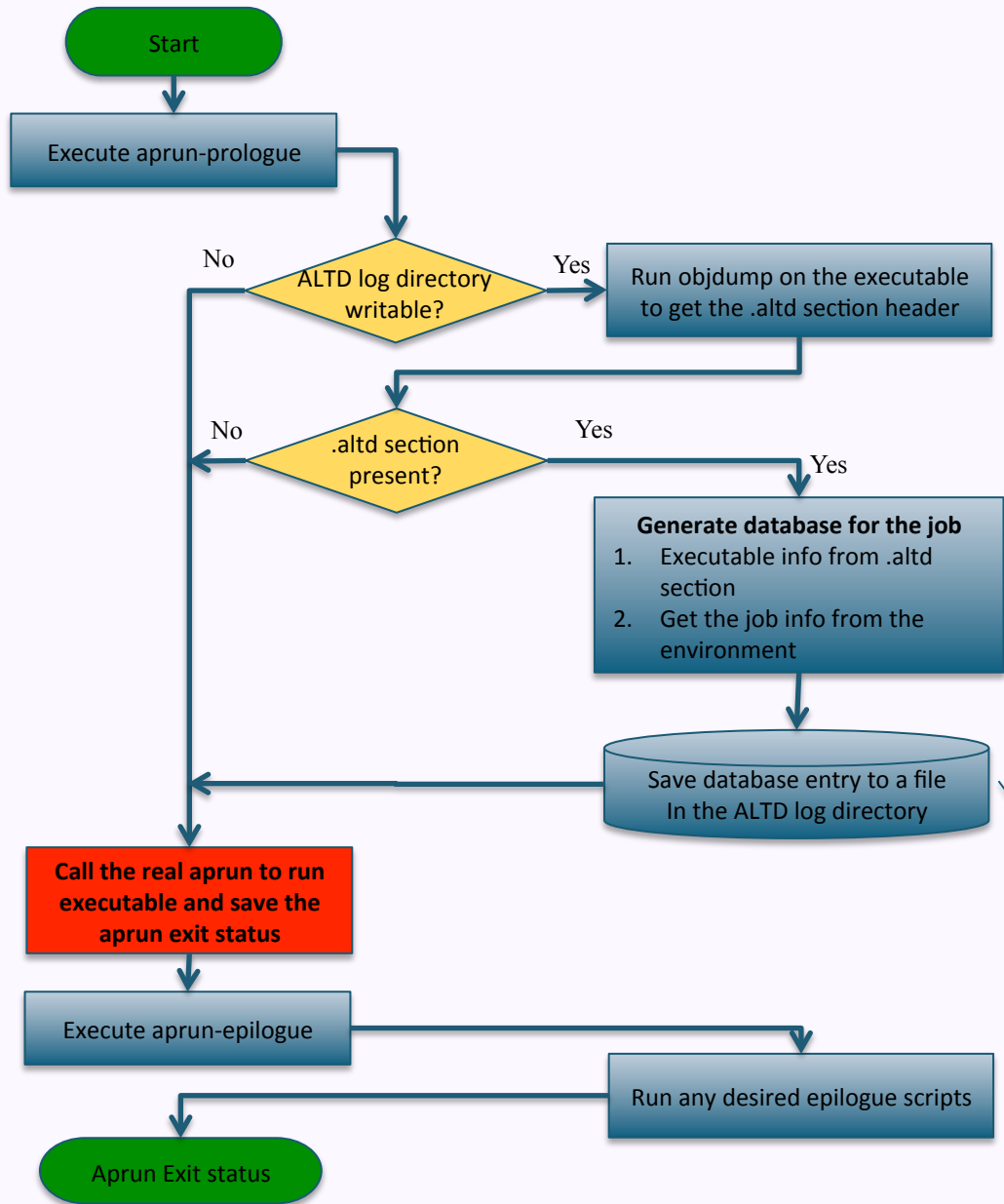
.byte 0x00, 0x00, 0x00, 0x00, 0x00, 0x00, 0x00, 0x00
.asciz "Version:1.0:"
.asciz "Machine:edison:"
.asciz "Tag_id:722afe23-c351-4485-a557-5f4c92d69546:"
.asciz "Year:2014:"
.byte 0x00, 0x00, 0x00, 0x00, 0x00, 0x00, 0x00, 0x00
.asciz "ALTD_Link_Info_End"
  
```

A cron job runs every 5 minutes to put the intercepted linklines in the files into the database tables:

```

altd_edison_link_tags
altd_edison_linkline
  
```

ALTD aprun wrapper follow chart



ALTD job launcher (aprun) wrapper:
 aprun - a perl script that wraps the job launcher
 aprun, which allows an arbitrary prologue
 and/or epilogue.
 aprun-prologue - a python script that runs before
 the job starts
 aprun-epilogue - a python script that runs after
 the job completes

Any other desired scripts can be executed in the
 aprun-prologue script

A cron job runs every 5 minutes to put the
 intercepted info for the executable and the job
 from the file into the database table:
 altd_edison_jobs

Any other desired scripts can be executed in the
 aprun-epilogue script

ALTD and file system usage



- **Installation -**
 - Edison /scratch1/altd/1.0
 - Hopper /scratch/altd/1.0
 - Carver /usr/common/usg/altd/1.0
- **Temporary files**
 - Edison /scratch1/altd/logs/
 - Hopper /scratch1/altd/logs/
 - Carver \$GSCRATCH
- **Backup files**
 - Daily Lustre
 - Monthly HPSS

ALTD tables



```

+-----+-----+-----+
| linking_int | shaline | linkline |
+-----+-----+-----+
| 187615 | a1bd90a030875faffd003ccecfaedfd9a84bfc3a | gtc /usr/lib64/gcc/x86_64-suse-linux/4.3/../../../../lib64/crt1.o /usr/lib64/gcc/x86_64-suse-linux/4.3/../../../../lib64/crti.o
|
| /usr/lib64/gcc/x86_64-suse-linux/4.3/crtbeginT.o /opt/intel/composer_xe_2013_sp1.2.144/compiler/lib/intel64/for_main.o module.o main.o function.o setup.o restart.o ...
| /cray/mpt/7.0.0/gni/mpich2-intel/140/lib/libfpich.a /usr/common/usg/darshan/2.3.0/lib/libdarshan-mpi-io.a /usr/common/usg/darshan/2.3.0/lib/libdarshan-posix.a
| /usr/common/usg/darshan/2.3.0/lib/libdarshan-stubs.a /usr/lib64/gcc/x86_64-suse-linux/4.3/../../../../lib64/libz.a
| /opt/cray/petsc/3.4.4.0/real/INTEL/140/sandybridge/lib/libcraypetsc_intel_real.a /opt/intel/composer_xe_2013_sp1.2.144/compiler/lib/intel64/libimf.a
| /opt/cray/tpsl/1.4.1/INTEL/140/sandybridge/lib/libHYPRE_intel.a /opt/cray/tpsl/1.4.1/INTEL/140/sandybridge/lib/libdmumps_intel.a
| /opt/cray/tpsl/1.4.1/INTEL/140/sandybridge/lib/libSundials_cvode_intel.a /opt/cray/tpsl/1.4.1/INTEL/140/sandybridge/lib/libSundials_nvecparallel_intel.a
| /opt/cray/tpsl/1.4.1/INTEL/140/sandybridge/lib/libsuperlu_dist_intel.a /opt/cray/tpsl/1.4.1/INTEL/140/sandybridge/lib/libsuperlu_intel.a
| /opt/cray/tpsl/1.4.1/INTEL/140/sandybridge/lib/libmumps_common_intel.a /opt/cray/tpsl/1.4.1/INTEL/140/sandybridge/lib/libptesmumps_intel.a
| /opt/cray/tpsl/1.4.1/INTEL/140/sandybridge/lib/libpard_intel.a /opt/cray/tpsl/1.4.1/INTEL/140/sandybridge/lib/libptscotch_intel.a
| /opt/cray/tpsl/1.4.1/INTEL/140/sandybridge/lib/libparmetis_intel.a /opt/cray/tpsl/1.4.1/INTEL/140/sandybridge/lib/libscotch_intel.a
| /opt/cray/tpsl/1.4.1/INTEL/140/sandybridge/lib/libptscotcherr_intel.a /opt/cray/tpsl/1.4.1/INTEL/140/sandybridge/lib/libmetis_intel.a
| /usr/lib64/gcc/x86_64-suse-linux/4.3/../../../../lib64/libpthread.a /usr/lib64/gcc/x86_64-suse-linux/4.3/../../../../lib64/librt.a
| /usr/lib64/gcc/x86_64-suse-linux/4.3/../../../../lib64/libthread.a /opt/cray/atp/1.7.3/lib/libAtpSigHandler.a /opt/cray/atp/1.7.3/lib/libAtpSigCommData.a
| /usr/lib64/gcc/x86_64-suse-linux/4.3/../../../../lib64/libpthread.a /opt/cray/libsci/13.0.0/INTEL/140/sandybridge/lib/libsci_intel_mpi_mp.a
| /opt/intel/composer_xe_2013_sp1.2.144/compiler/lib/intel64/libimf.a /opt/cray/libsci/13.0.0/INTEL/140/sandybridge/lib/libsci_intel_mp.a
| /opt/intel/composer_xe_2013_sp1.2.144/compiler/lib/intel64/libimf.a /opt/intel/composer_xe_2013_sp1.2.144/compiler/lib/intel64/libiomp5.a
| /opt/cray/netcdf/4.3.2/INTEL/140/lib/libnetcdf.a /usr/lib64/gcc/x86_64-suse-linux/4.3/../../../../lib64/libpthread.a /opt/cray/netcdf/4.3.2/INTEL/140/lib/libnetcdf.a
| /opt/cray/hdf5/1.8.13/INTEL/140/lib/libhdf5_hl.a /opt/cray/hdf5/1.8.13/INTEL/140/lib/libhdf5.a /usr/lib64/gcc/x86_64-suse-linux/4.3/../../../../lib64/libz.a
| /usr/lib64/gcc/x86_64-suse-linux/4.3/../../../../lib64/libdl.a /opt/intel/composer_xe_2013_sp1.2.144/compiler/lib/intel64/libimf.a
| /opt/cray/mpt/7.0.0/gni/mpich2-intel/140/lib/libmpich_intel.a /opt/cray/ugni/5.0-1.0502.9037.7.26.ari/lib64/libugni.a
| /usr/lib64/gcc/x86_64-suse-linux/4.3/../../../../lib64/libpthread.a /opt/cray/pmi/5.0.4-1.0000.10161.132.4.ari/lib64/libpmi.a
| /opt/cray/mpt/7.0.0/gni/mpich2-intel/140/lib/libmpl.a /usr/lib64/gcc/x86_64-suse-linux/4.3/../../../../lib64/libpthread.a
| /opt/cray/alps/5.2.1-2.0502.8712.10.32.ari/lib64/libalpslli.a /opt/cray/wlm_detect/1.0-1.0502.51217.1.1.ari/lib64/libwlm_detect.a
| /opt/cray/ugni/5.0-1.0502.9037.7.26.ari/lib64/libugni.a /opt/cray/alps/5.2.1-2.0502.8712.10.32.ari/lib64/libalpsutil.a
| /opt/cray/xpmem/0.1-2.0502.51169.1.11.ari/lib64/libxpmem.a /opt/cray/udreg/2.3.2-1.0502.8763.1.11.ari/lib64/libudreg.a
| /opt/intel/composer_xe_2013_sp1.2.144/compiler/lib/intel64/libifport.a /opt/intel/composer_xe_2013_sp1.2.144/compiler/lib/intel64/libifcoremt.a
| /opt/intel/composer_xe_2013_sp1.2.144/compiler/lib/intel64/libimf.a /opt/intel/composer_xe_2013_sp1.2.144/compiler/lib/intel64/libsvml.a
| /opt/intel/composer_xe_2013_sp1.2.144/compiler/lib/intel64/libirc.a /usr/lib64/gcc/x86_64-suse-linux/4.3/../../../../lib64/libpthread.a
| /usr/lib64/gcc/x86_64-suse-linux/4.3/../../../../lib64/libc.a /usr/lib64/gcc/x86_64-suse-linux/4.3/libgcc.a
| /usr/lib64/gcc/x86_64-suse-linux/4.3/libgcc_eh.a /usr/lib64/gcc/x86_64-suse-linux/4.3/../../../../lib64/libc.a
| /usr/lib64/gcc/x86_64-suse-linux/4.3/crtend.o /usr/lib64/gcc/x86_64-suse-linux/4.3/../../../../lib64/crtn.o

```

| tag_id | linkline_id | username | link_date |
|--------------------------------------|-------------|----------|------------|
| 19520da0-1697-4d61-bfba-54f02e482287 | 187615 | wlzhang | 2014-08-07 |
| 8f625c65-1940-4070-a951-d61a308c59b7 | 420039 | seeyc | 2014-08-07 |
| bf6d83b9-776c-42e9-a195-8806342e3967 | 184391 | scoh | 2014-08-07 |

| run_inc | tag_id | executable | username | run_date | job_launch_id | build_machine |
|---------|--------------------------------------|--|----------|------------|---------------|---------------|
| 1001241 | 19520da0-1697-4d61-bfba-54f02e482287 | /scratch1/scratchdirs/wlzhang/testing/tae5/exec | wlzhang | 2014-08-07 | 1532879 | edison |
| 1001542 | 8f625c65-1940-4070-a951-d61a308c59b7 | /global/homes/s/seeyc/cti0ld/bin/postpro.exe | seeyc | 2014-08-07 | 1532892 | edison |
| 1001490 | bf6d83b9-776c-42e9-a195-8806342e3967 | /global/homes/s/scoh/compile/epw/ver_3.0.0_fix_ws/save_bin/epw.x | scoh | 2014-08-07 | 1532895 | edison |

ALTD Table Definitions



```
| altd_edison_link_tags | CREATE TABLE  
`altd_edison_link_tags` (  
  `tag_id` varchar(64) NOT NULL,  
  `linkline_id` int(11) NOT NULL,  
  `username` varchar(64) NOT NULL,  
  `link_date` date NOT NULL,  
  PRIMARY KEY (`tag_id`)  
) ENGINE=MyISAM DEFAULT CHARSET=utf8 |
```

```
| altd_edison_linkline | CREATE TABLE  
`altd_edison_linkline` (  
  `linking_inc` int(11) NOT NULL  
  AUTO_INCREMENT,  
  `shaline` varchar(64) NOT NULL,  
  `linkline` varchar(16382) NOT NULL,  
  PRIMARY KEY (`linking_inc`, `shaline`)  
) ENGINE=MyISAM AUTO_INCREMENT=534501  
DEFAULT CHARSET=utf8 |
```

ALTD Table Definitions



```
| altd_edison_jobs | CREATE TABLE `altd_edison_jobs` (  
  `run_inc` int(12) NOT NULL AUTO_INCREMENT,  
  `tag_id` varchar(64) NOT NULL,  
  `executable` varchar(1024) NOT NULL,  
  `username` varchar(64) NOT NULL,  
  `run_date` date NOT NULL,  
  `job_launch_id` int(11) NOT NULL,  
  `build_machine` varchar(64) NOT NULL,  
  PRIMARY KEY (`run_inc`),  
  KEY `job_launch_id` (`job_launch_id`),  
  KEY `username` (`username`),  
  KEY `run_date` (`run_date`)  
) ENGINE=MyISAM AUTO_INCREMENT=1322886 DEFAULT  
CHARSET=utf8 |
```

ALTD cron jobs



- **Every five minutes to update the database**
 - Edison - runs on edison01
 - Hopper runs on Hopper03
 - Carver - No cron jobs
- **There are at most two cron altd connections from each machine at any given time**
 - Ld_db.sh
 - Aprun_db.sh

Maintenance (POC procedure)

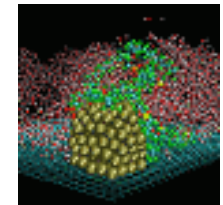
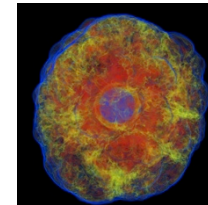
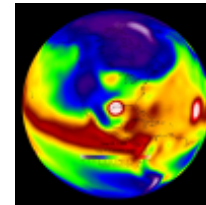
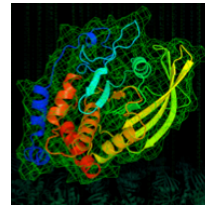
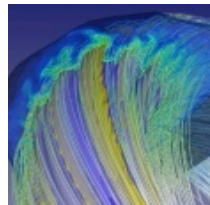
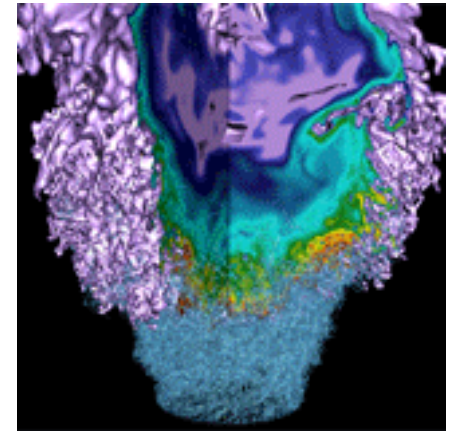


- **If ALTD causes problem, unload the altd module in the usg-default-modules on each system**

<https://twiki.nersc.gov/twiki/bin/view/USG/DisableALTD>

- **Requirement for database server**
 - 8:00am-5:00pm
- **Contact**
 - Zhengji
 - Helen
 - Jack

Your Suggestion for Improvement



Summary of the meeting discussion:

Attendees: David Turner, Douglas Jacobson, Larry Pezzaglia, Lisa Gerhardt, Rei Lee, Stefan Lasiewski, Helen He Tina Declerck, Tina Butler, Jack Deslippe,



General questions:



- **Where to install ALTD**
 - /usr/common/usg/altd?
 - Other?
- **Ownership of the ALTD installation directory**
 - LD should be owned by root, but it is a bigger issue (security)
 - Files owned by CSG, but USG has permission to modify?
 - Usgsafe and usg (need to remove the w bit for the ld command)
 - Other?
- **Temporary file system usage**
 - /scratch and /tmp
- **Database usage**
 - staffdb01

Inputs from CSG, Cray and NGF



- **Off switch for OPS or others when ALTD causes system problems.**
- **Need to evaluate the overhead of aprun wrapper when there are thousands of aprun invocations in a single user job.**

Server team



- **Point of contact when ALTD causes problem.**
- **Maintenance procedure**
- **Proper use of keys, so to avoid extra load on to the database server**
- **Use ENGINE=innodb, instead of MyISAM**
- **DB manager comes with DB can analyze and suggests optimizations (such as suggesting to add a primary key based on your inquiries)**
- **Move the database to the new server, staffdb01**

- **Add alps id**
- **Replace the use of the file system with syslog or RabbitMQ for long run.**
- **The syslog approach could be an easier and quick solution for the problem (rather frequent Lustre file system issue).**
 - use /usr/common to read, use syslog to write
 - syslog over udp not over tcp
 - Message size limit? Doug tried 4MB messages
 - Log files owned by CSG, but USG has permission to modify?
- **Document for use and query, DB passwords, etc., for other staff.**



Thank you very much for your inputs!