

PDSF Users Meeting

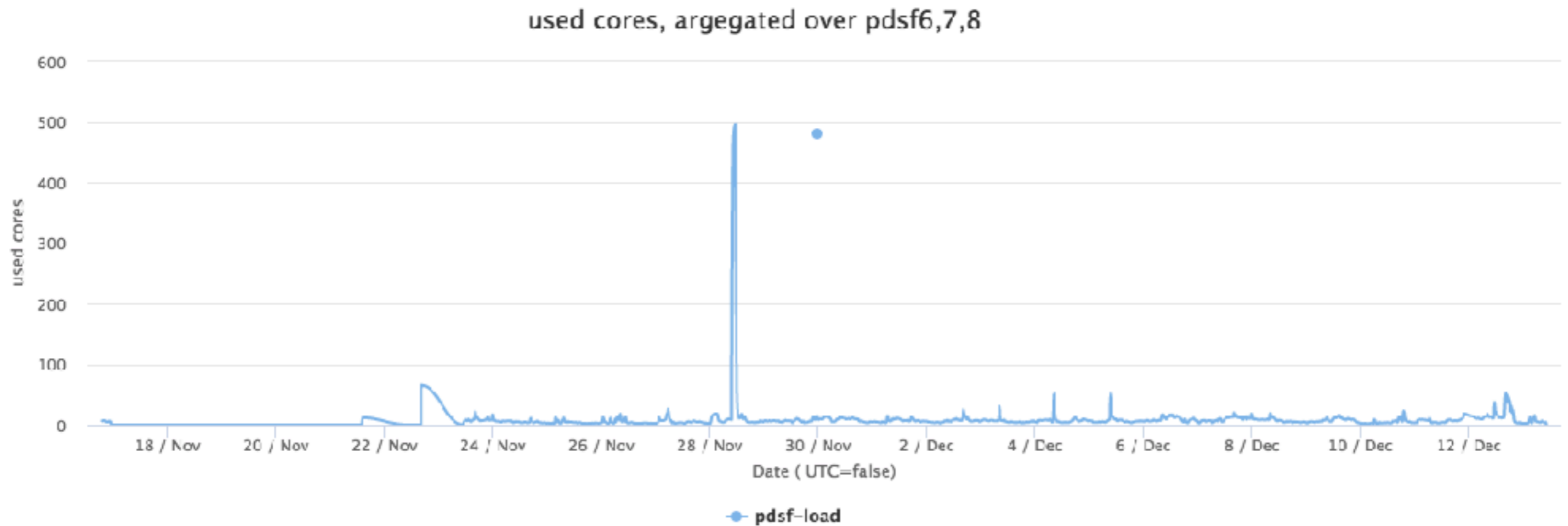
- * PDSF performance
- * announcements
- * AOB

December 13, 2016

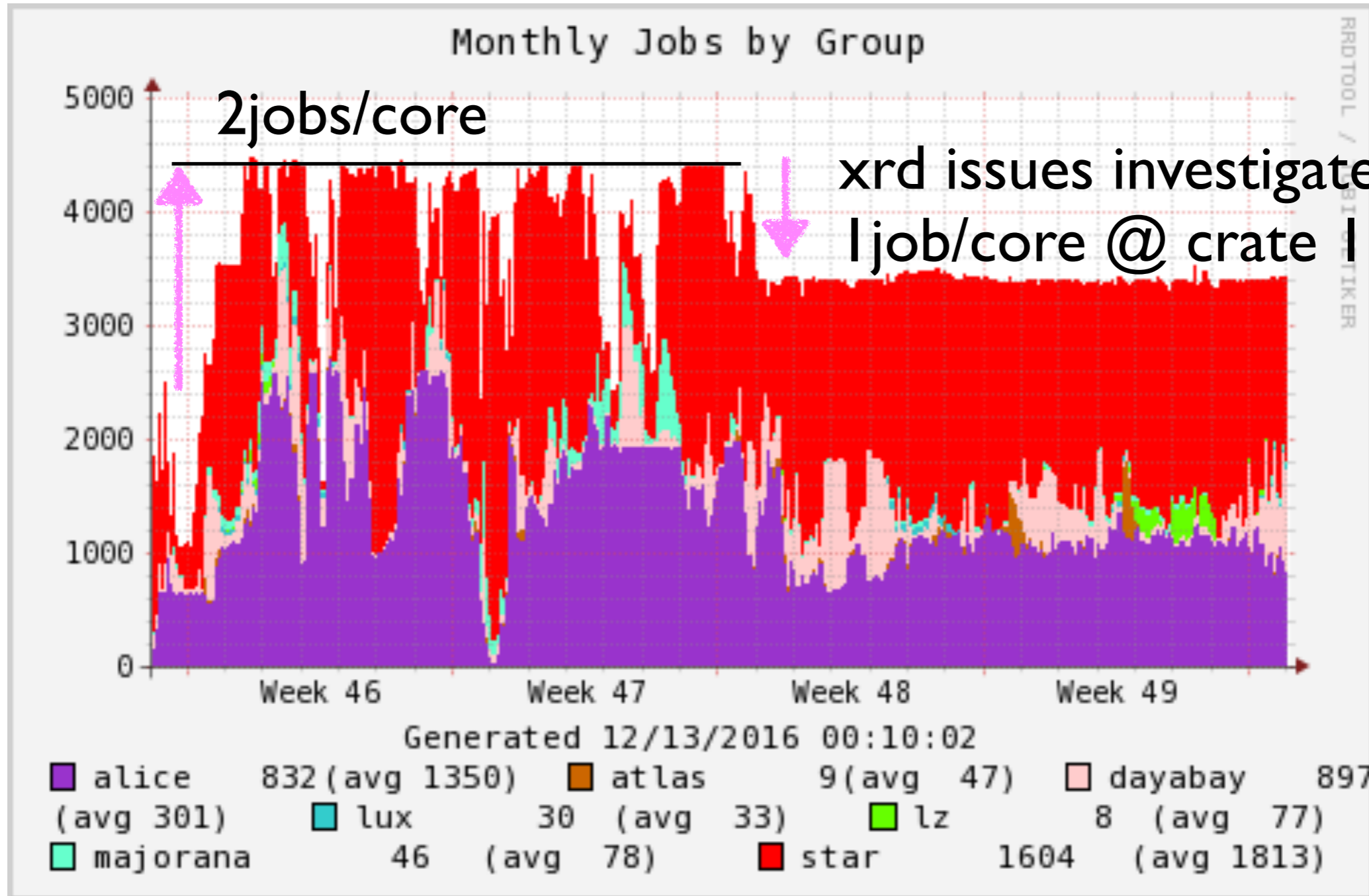
Jan Balewski

aggregated load on PDSF interactive nodes

<https://portal-auth.nersc.gov/pdsf-mon/>

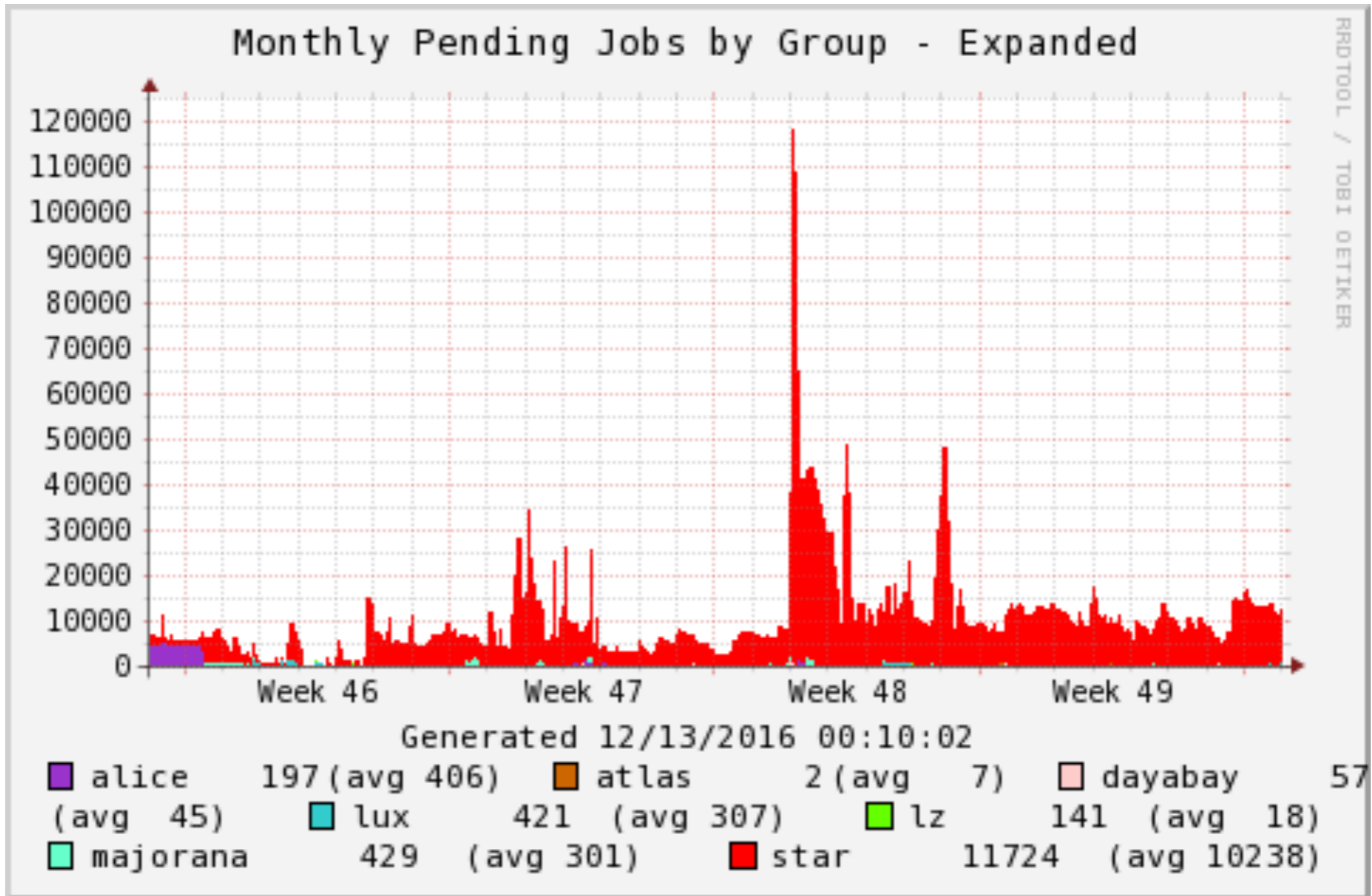


CPU Utilization

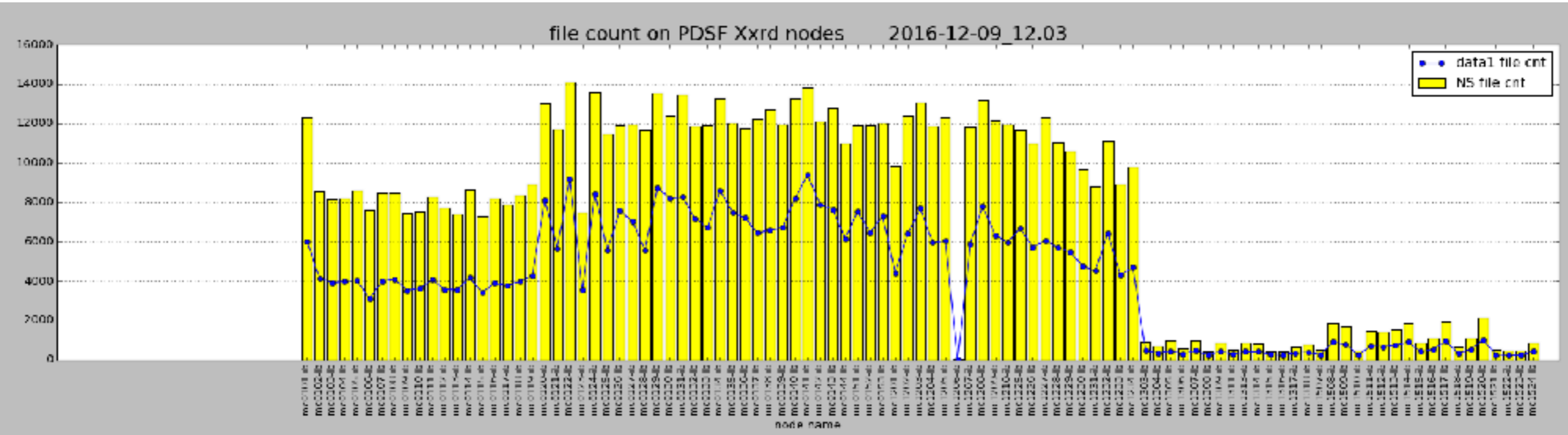


RRD TOOL / CRITIQUER

UGE queue load



xrootd file distribution



Announcements

Bi-weekly office hours 12:30 -2:30pm

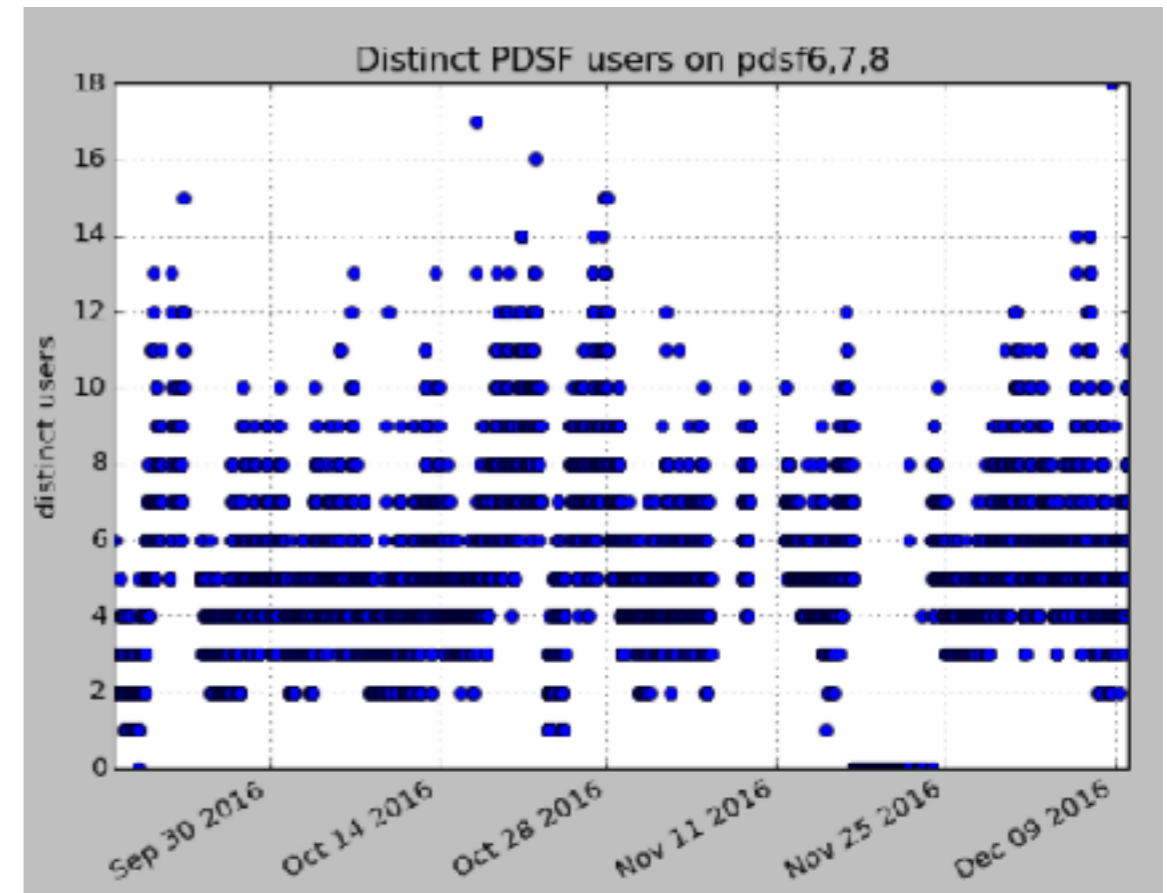
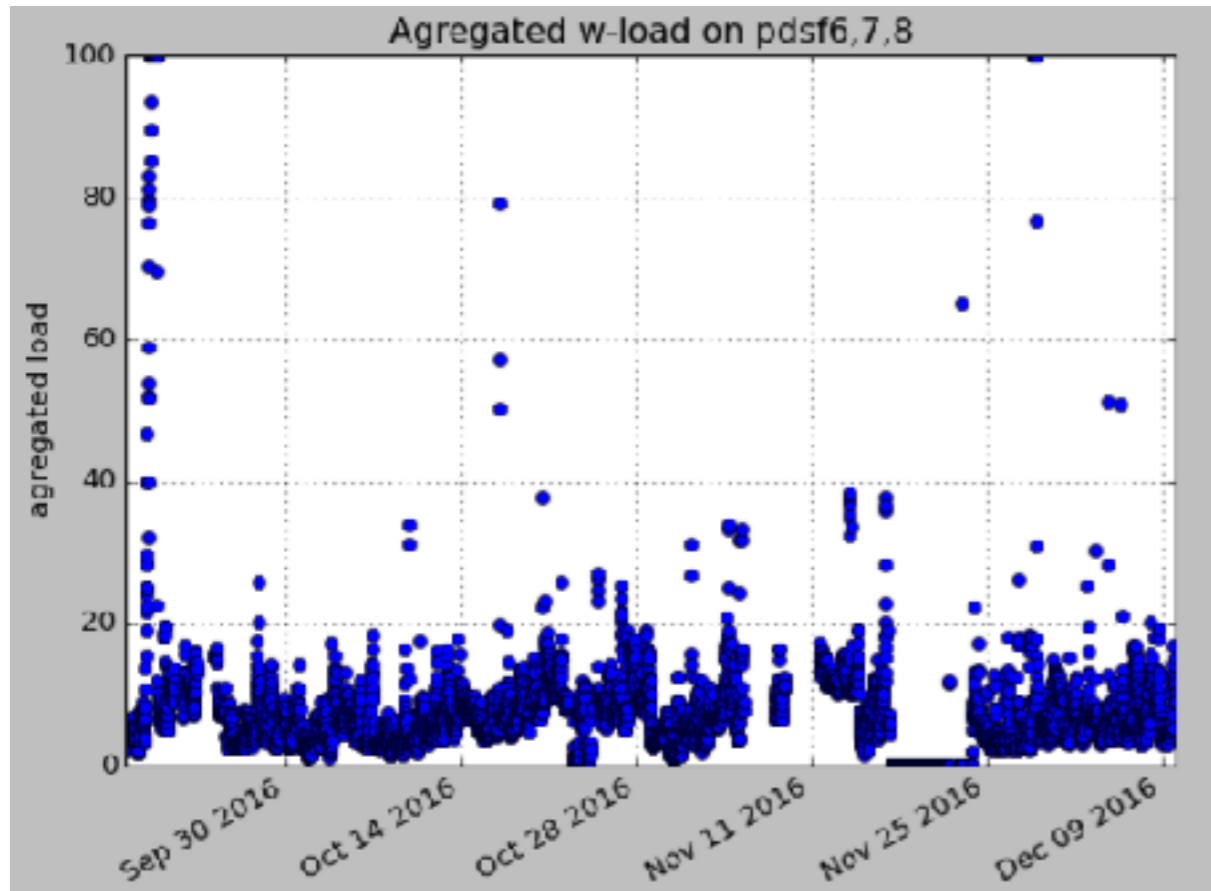
Thursday, December 22, January 15 , 59-4016-CR

PDSF user meeting

- Tuesday, January 10, 11am - 12pm, 59-3034-CR

Utilization of PDSF login nodes

- 3 months of history
- aggregated over pdsf6,7,8
- 3*32 cores , 3*128 GB RAM



Only users running computation
'top ibn1' every 20 minutes

AOB