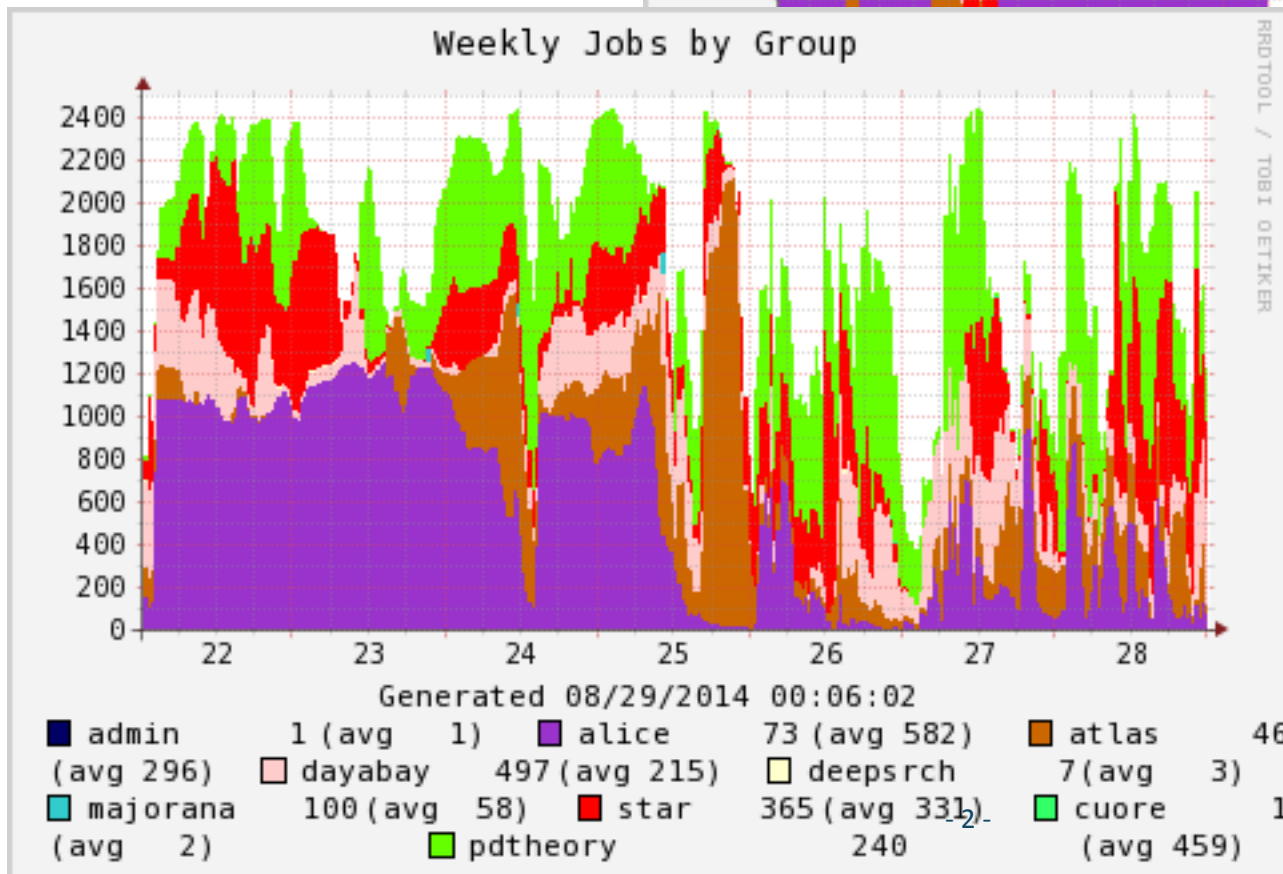
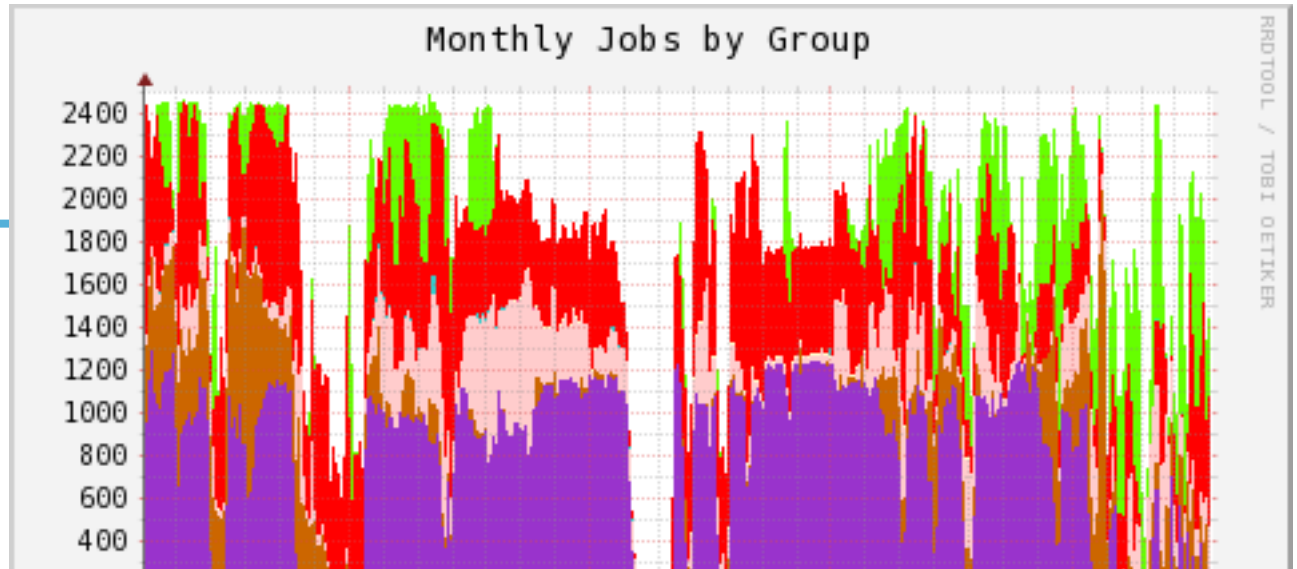


PDSF User Meeting

September 2, 2014

Lisa Gerhardt

Utilization



Week 33 Week 34 Week 35

08/29/2014 00:11:03

admin	70 (avg 833)	atlas	103
dayabay	212	deepsrch	3 (avg 5)
majorana	1 (avg 1)	star	1
pdtheory	1 (avg 2)	pdtheory	358

Past Outages



- **8/12/14 (all day): PDSF maintenance, migration to global homes**

Planned Outages



- **Eliza18 switch sometime this week. Estimate 12 hours of down time**

U-Hunting



- Old PDSF homes are mounted read only
- Need to be removed eventually (no date yet)
- Any reference to “/u/” or “/home” will fail once this happens
- Please replace these with “\$HOME” or /global/homes/....
- The entire SL53 software stack is located on old PDSF homes
 - Must be relocated
 - Don’t expect any issues, but please let us know if something stops working

Chos on Carver



- **On 8/18 Carver switched to chos**
- **Chos is controlled with .chos-carver file in home directory**
 - Scientific Linux 5.3 (sl5carver)
 - Scientific Linux 6.3 (sl6carver)
- **Currently default is SL5, but it will switch on 9/22 to SL6**
 - If you want to keep SL5, must have “sl5carver” in .chos-carver file
- **If you see anything missing / not working, please open a ticket**

Topics from the Users

