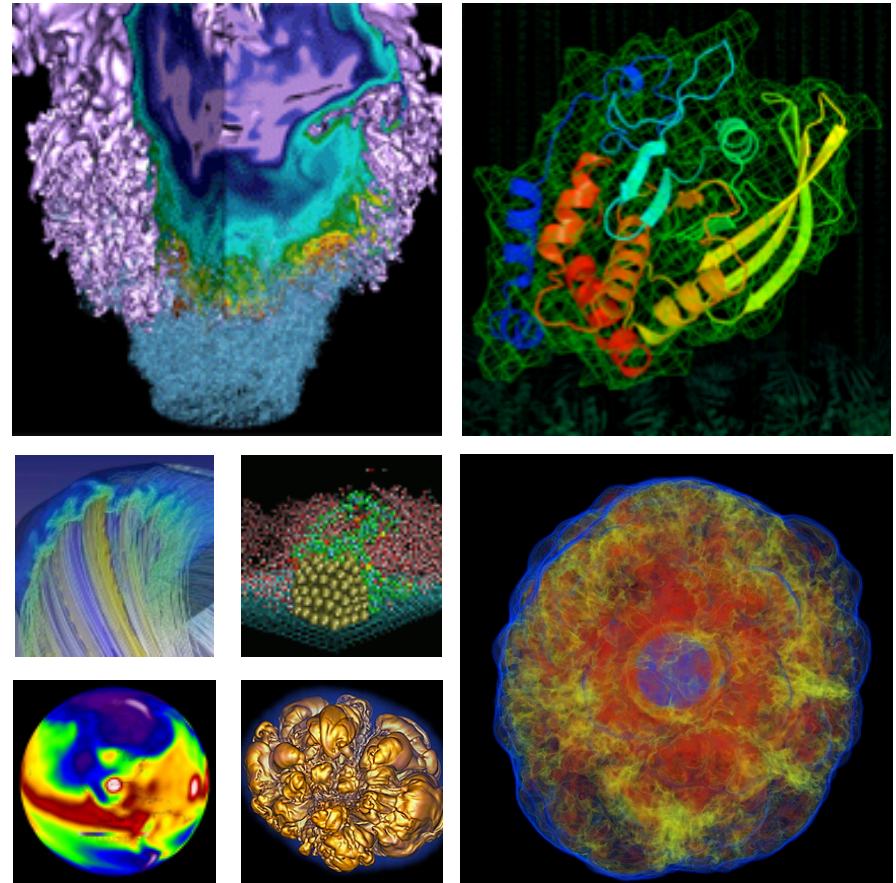


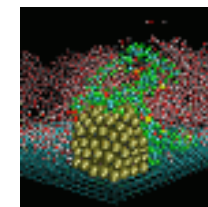
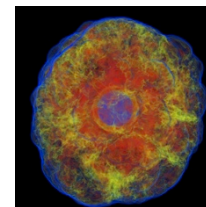
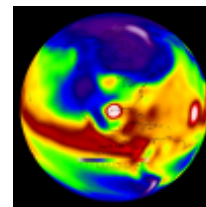
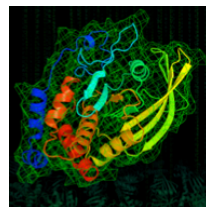
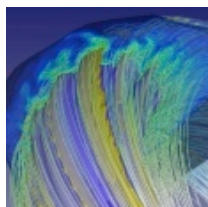
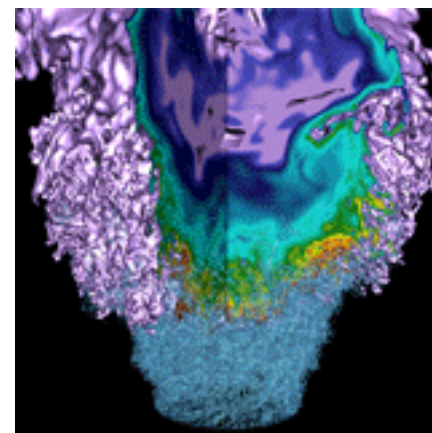
NERSC's 10 year plan



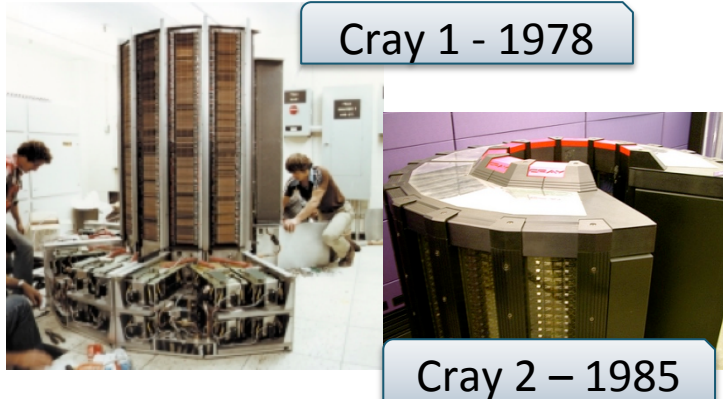
Sudip Dosanjh
Director

February 3, 2014

NERSC Overview



NERSC's 40th Anniversary!



Cray 1 - 1978

Cray 2 - 1985



Cray T3E Mcurie - 1996



IBM Power3 Seaborg - 2001

1974	Founded at Livermore to support fusion research with a CDC system
1978	Cray 1 installed
1983	Expanded to support today's DOE Office of Science
1986	ESnet established at NERSC
1994	Cray T3D MPP testbed
1994 - 2000	Transitioned users from vector processing to MPP
1996	Moved to Berkeley Lab
1996	PDSF data intensive computing system for nuclear and high energy physics
1999	HPSS becomes mass storage platform
2006	Facility wide filesystem
2010	Collaboration with JGI

NERSC collaborates with computer companies to deploy advanced HPC and data resources



- Hopper (N6) and Cielo (ACES) were the first Cray petascale systems with a Gemini interconnect
- Edison (N7) is the first Cray petascale system with Intel processors, Aries interconnect and Dragonfly topology (serial #1)
- N8 and Trinity (ACES) are being jointly designed as on-ramps to exascale
- Architected and deployed data platforms including the largest DOE system focused on genomics
- One of the first facility-wide filesystems

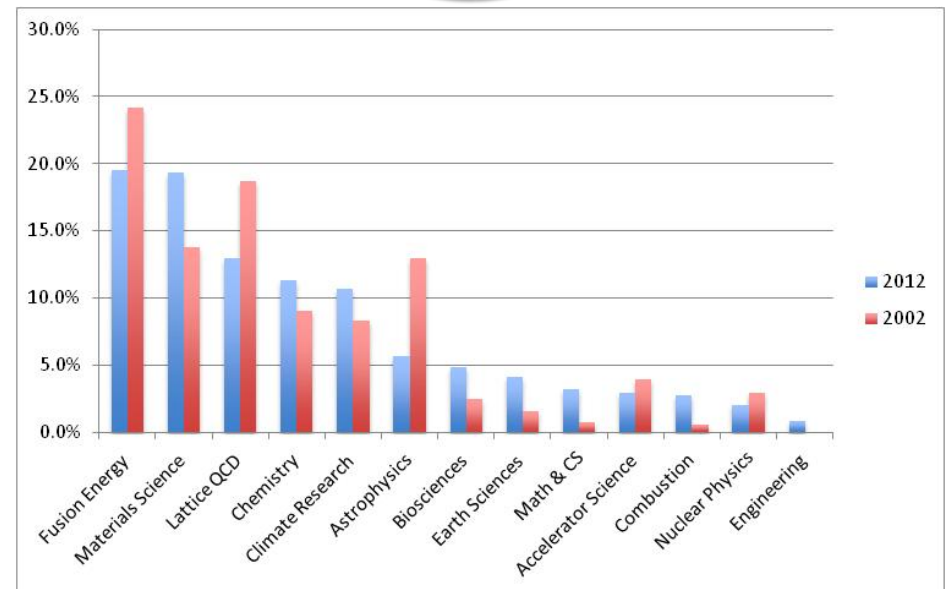
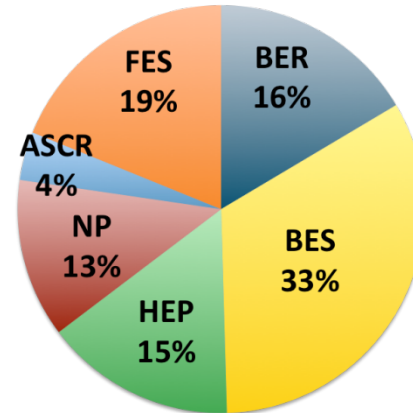


We employ experts in high performance computing, computer systems engineering, data, storage and networking

We directly support DOE's science mission



- We are the primary computing facility for DOE Office of Science
- DOE SC allocates the vast majority of the computing and storage resources at NERSC
 - Six program offices allocate their base allocations and they submit proposals for overtargets
 - Deputy Director of Science prioritizes overtarget requests
- Usage shifts as DOE priorities change



We focus on the scientific impact of our users



- 1,500 journal publications per year
- More than 10 journal cover stories per year
- 3 recent Nobel Prize-winning projects used NERSC (2007, 2011, 2013)
- Physics Magazine 2013 “Breakthrough of the Year” used NERSC resources to identify first high-energy cosmic neutrinos. (IceCube)
- Finding that Earth-like planets are not uncommon in our galaxy recognized as a top 2013 discovery by **Wired Magazine** and covered in **The New York Times**.
- MIT researchers developed a new approach for desalinating sea water using sheets of graphene, a one-atom-thick form of the element carbon. **Smithsonian Magazine’s** fifth “Surprising Scientific Milestone of 2012.”
- Four of **Science Magazine’s** insights of the last decade (three in genomics, one related to cosmic microwave background)

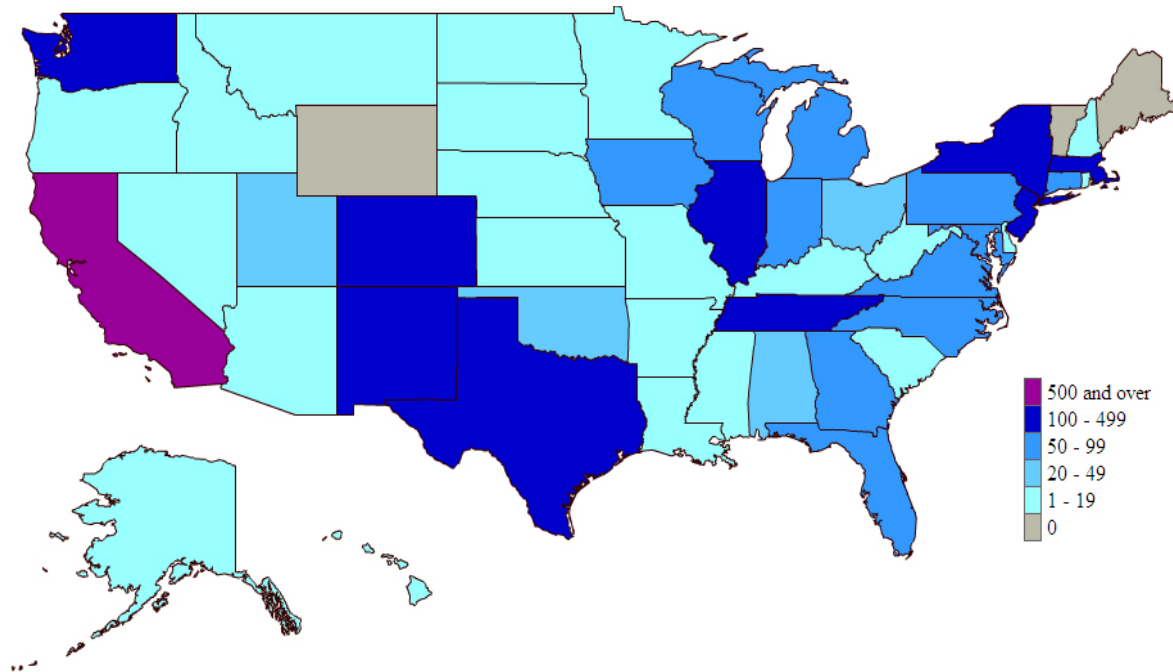
17 Journal Covers
in 2012



We support a broad user base



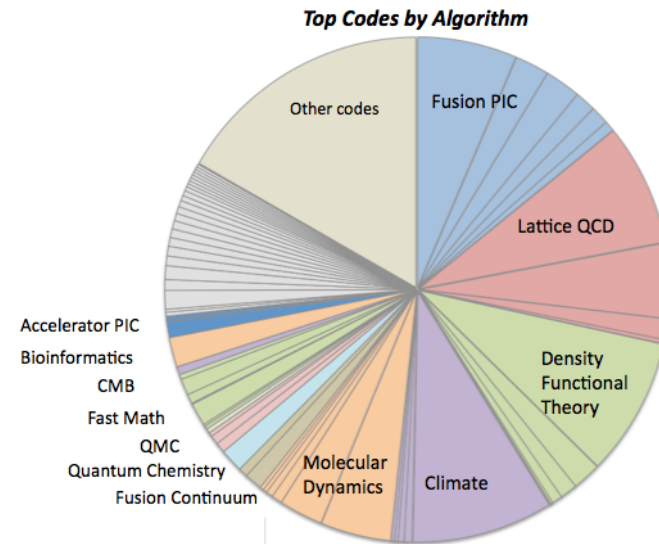
- 4500 users, and we typically add 350 per year
- Geographically distributed: 47 states as well as multinational projects



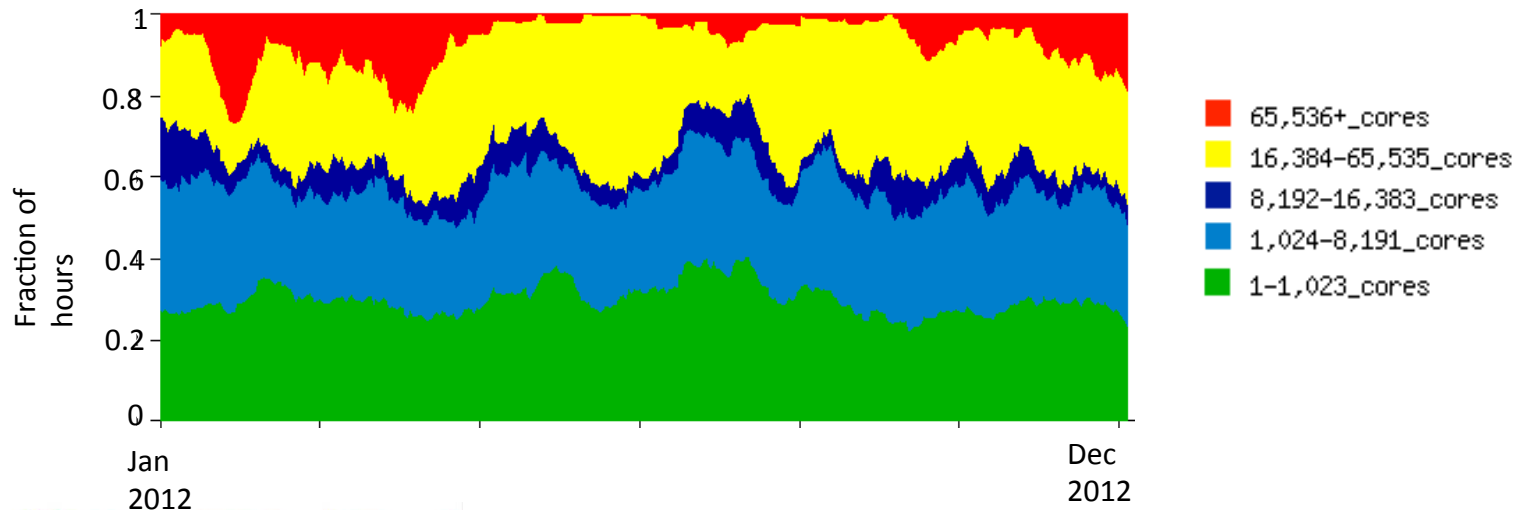
We support a diverse workload



- Many codes (600+) and algorithms
- Computing at scale and at high volume



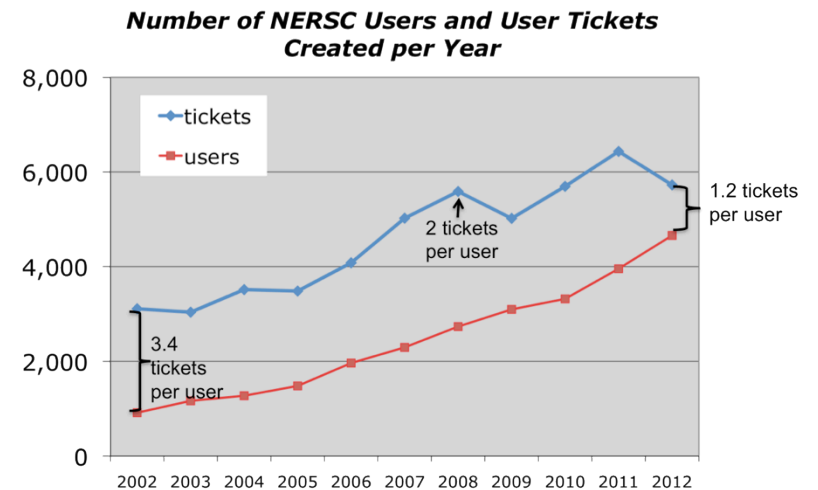
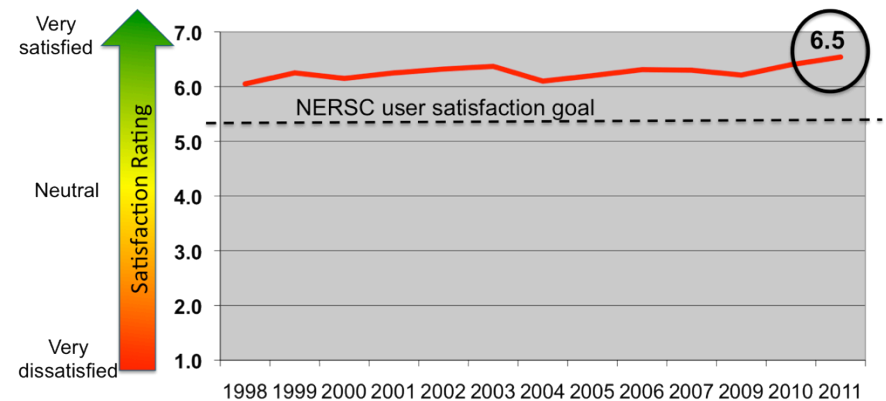
2012 Job Size Breakdown on Hopper



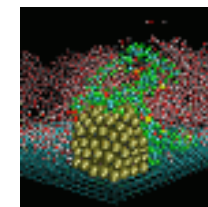
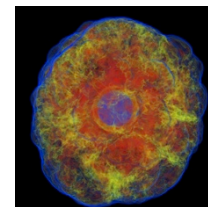
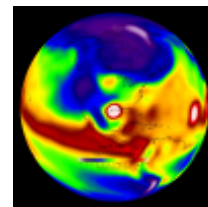
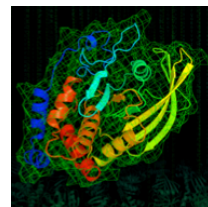
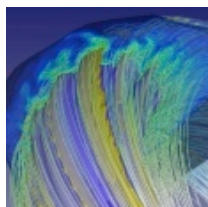
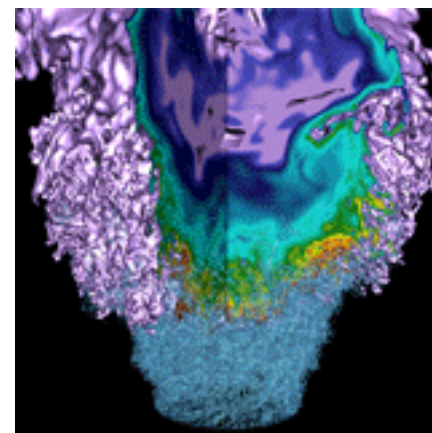
Our operational priority is providing highly available HPC resources backed by exceptional user support



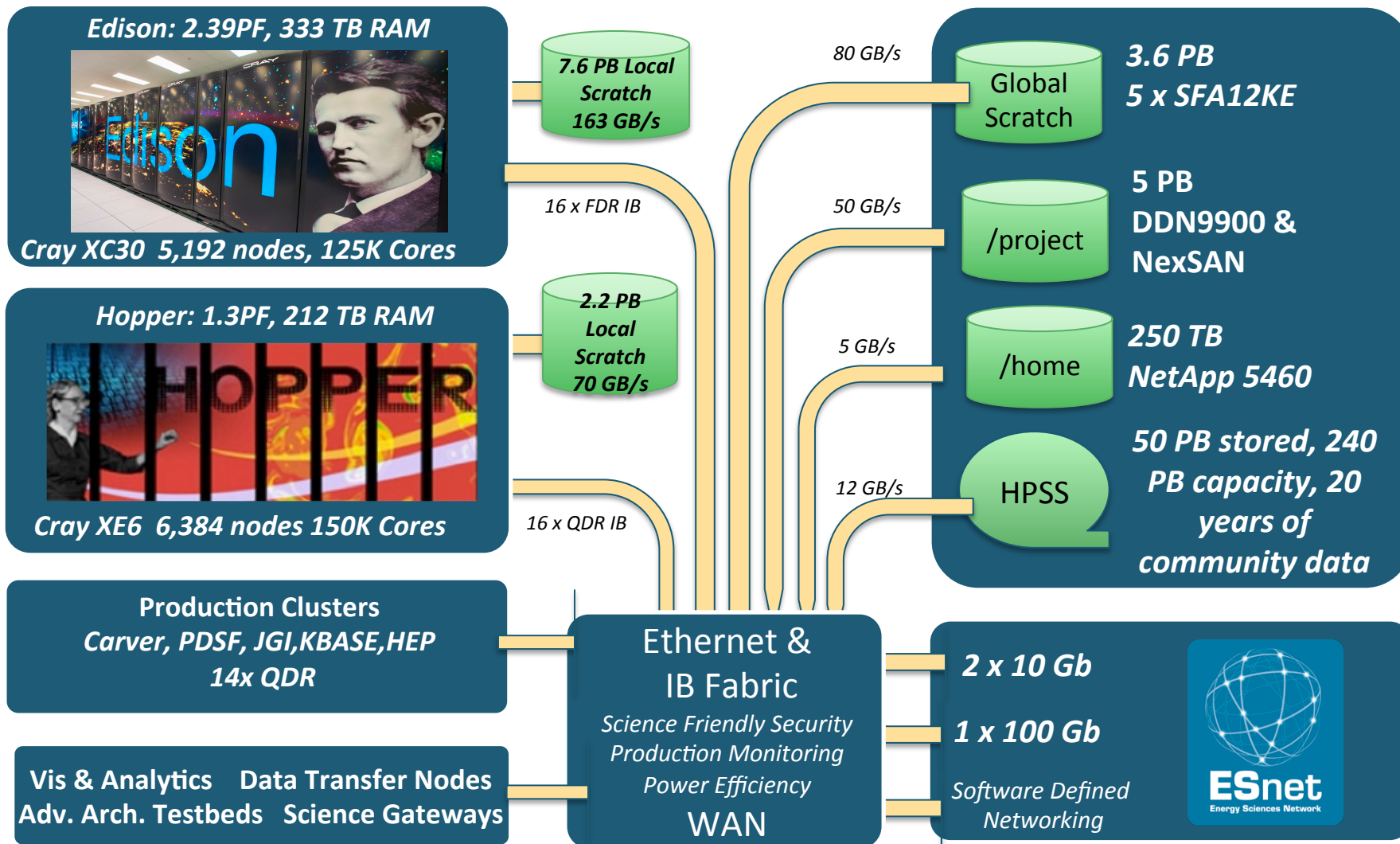
- **We maintain a very high availability of resources (>90%)**
 - One large HPC system is available at all times to run large-scale simulations and solve high throughput problems
- **Our goal is to maximize the productivity of our users**
 - One-on-one consulting
 - Training (e.g., webinars)
 - Extensive use of web pages
 - We solve or have a path to solve 80% of user tickets within three business days



NERSC Today



NERSC Systems Today



	Edison	Mira	Titan	Hopper
Peak Flops (PF)	2.4	10.0	5.26 (CPU) 21.8 (GPU)	1.29
CPU cores	124,800	786,432	299,008 (CPU) 18,688 (GPU's)	152,408
Frequency (GHz)	2.4	1.6	2.2 (CPU) 0.7 (GPU)	2.1
Memory (TB)	333	786	598 (CPU) 112 (GPU)	217
Memory/node (GB)	64	16	32 (CPU) 6 (GPU)	32
Memory BW* (TB/s)	530.4	1406	614 (CPU) 3,270 (GPU)	331
Memory BW/node* (GB/s)	98	29	33 (CPU) 175 (GPU)	52
Filesystem	7.6 PB 163 GB/s	35 PB 240 GB/s	10 PB 240 GB/s	2 PB 70 GB/s
Peak Bisection BW (TB/s)	11.0	24.6	11.2	5.1
Peak Bisection BW/node (GB/s)	2.12	0.50	0.60	0.80
Sq ft	1200	~1500	4352	1956
Power (MW Linpack)	2.10	3.95	8.21	2.91

* STREAM

The Computational Research and Theory (CRT) building will be the home for NERSC-8



- **Four story, 140,000 GSF**
 - 300 offices on two floors
 - 20K -> 29Ksf HPC floor
 - 12.5MW -> 42 MW to building
- **Located for collaboration**
 - CRD and ESnet
 - UC Berkeley
- **Exceptional energy efficiency**
 - Natural air and water cooling
 - Heat recovery
 - PUE < 1.1
 - LEED gold design
- **Initial occupancy Fall 2014**



NERSC-8 Mission Need



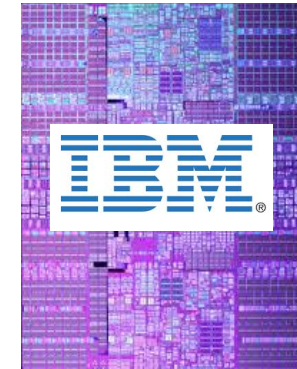
The Department of Energy Office of Science requires an HPC system to support the rapidly increasing computational demands of the entire spectrum of DOE SC computational research.

- Provide a significant increase in computational capabilities, at least 10 times the sustained performance of the Hopper system on a set of representative DOE benchmarks
- Delivery in the 2015/2016 time frame
- Provide high bandwidth access to existing data stored by continuing research projects.
- Platform needs to begin to transition users to more energy-efficient many-core architectures.

Although architecture for NERSC-8 is not yet known, trend is toward manycore processors



- Regardless of chip vendor chosen for NERSC-8, users will need to modify applications to achieve performance
- Multiple levels of code modification may be necessary
 - Expose more on-node parallelism in applications
 - Increase application vectorization capabilities
 - For co-processor architectures, locality directives must be added



NERSC Upgrades: Meeting Demand



System attributes	NERSC-6	NERSC-7	NERSC-8 (proposed)
	Hopper	Edison	
System peak	1.3 PF	2.4PF	20-40PF
Power	2.9 MW (Peak) 2.2MW (Typical)	3 MW (Peak) 1.6 MW (Typical)	<5 MW (Peak)
System memory	0.21 PB	0.33 PB	1-2 PB
Node performance	202GF	460 GF	2-3.5TF
Node memory BW	50 GB/s	100 GB/s	100-500 GB/s
Node concurrency	24 AMD Magnycours cores	24 Intel Ivy Bridge Cores	up to 512
System size (nodes)	6,384 nodes	5,200 nodes	8,000-12,000 nodes
MPI Node Interconnect BW	~3 GB/s	~9GB/s	Up to 15GB/s

NERSC's Application Readiness Strategy



We will use a number of approaches to prepare our diverse user community for the N8 architecture

**Vendor/
NERSC /
ACES
partnership**

Create a tight partnership with selected NERSC-8 integrator and chip vendor.

**Early
testbeds
for users**

NERSC will provide early testbed to users. Many NERSC users are sophisticated and can make progress porting applications independently.

**Partner
with and
leverage
existing
efforts**

Learn from SciDAC engagements, OLCF, ALCF, LLNL application readiness efforts. Exchange lessons learned and best practices.

**Developers
Workshops**

Host a series of developer workshops. Important because NERSC supports a large number of 3rd party applications, particularly in areas of materials science and chemistry

**Engage
with
Application
teams**

Deep dives with application teams representing key science areas and algorithms to create case studies for all NERSC users

**Widespread
training
series and
online
modules**

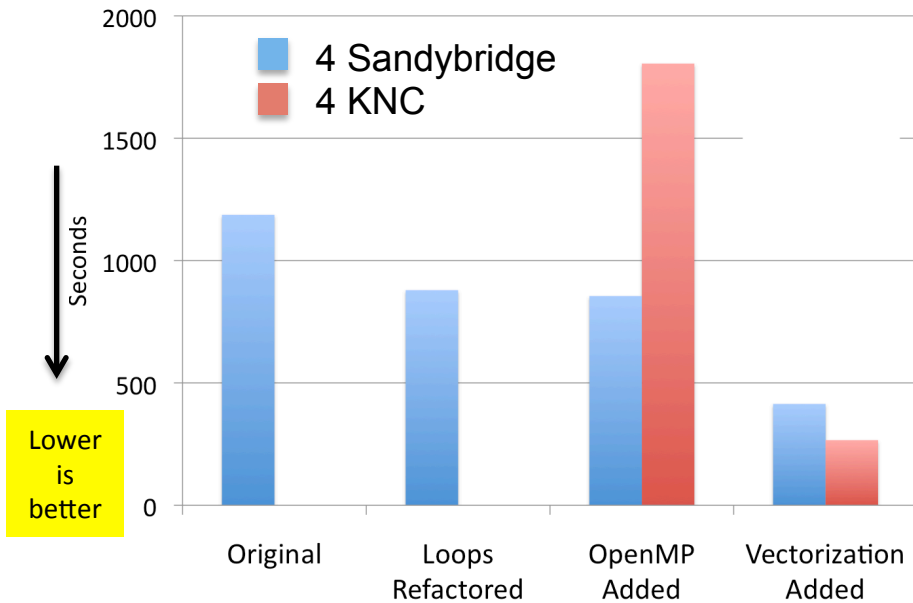
Host workshops, online training and create easy to follow online documentation and training modules

Application Readiness team is examining KNC (and GPUs)

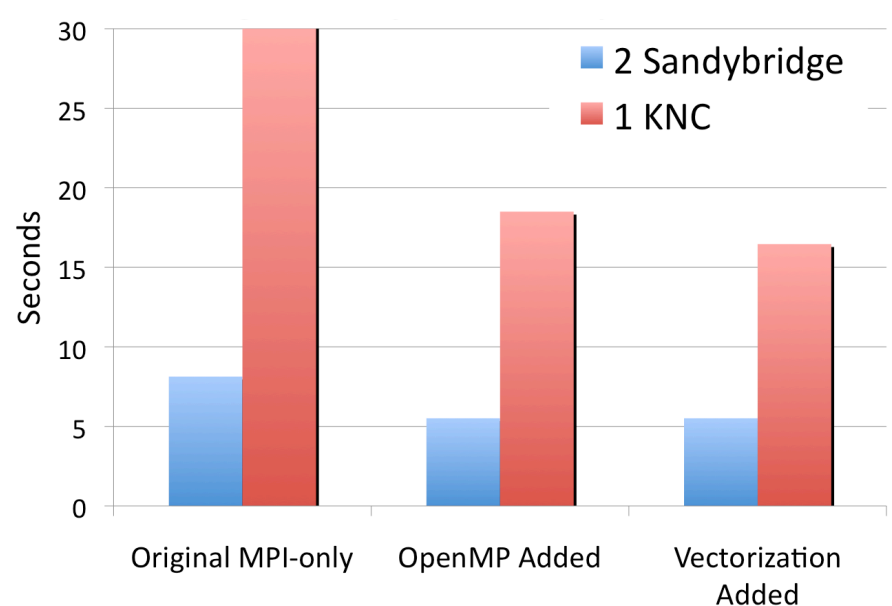


Some applications are well suited to the Knight's architecture, while others will need significant changes to achieve good performance.

Berkeley GW Kernel Performance on Knight's Corner (KNC)



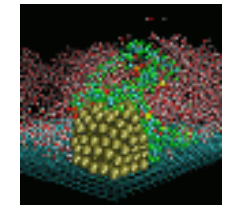
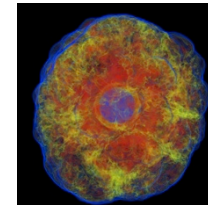
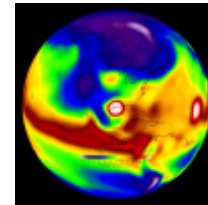
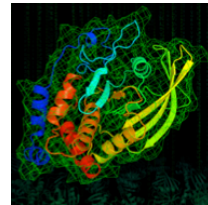
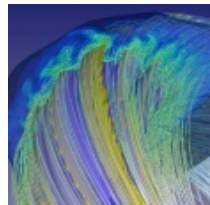
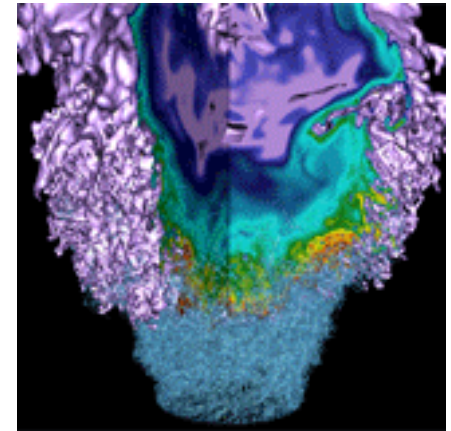
CSU Atmospheric Model Multigrid Solver on Knight's Corner (KNC)



- BerkeleyGW kernel is example of code that can benefit from manycore architecture.
- Early prototype KNC hardware roughly equals performance of Sandybridge processor
- Optimizations for KNC improve performance on Sandybridge

- Despite improvements from adding OpenMP and vectorization, this multigrid solver will need further restructuring to run on optimally on KNC

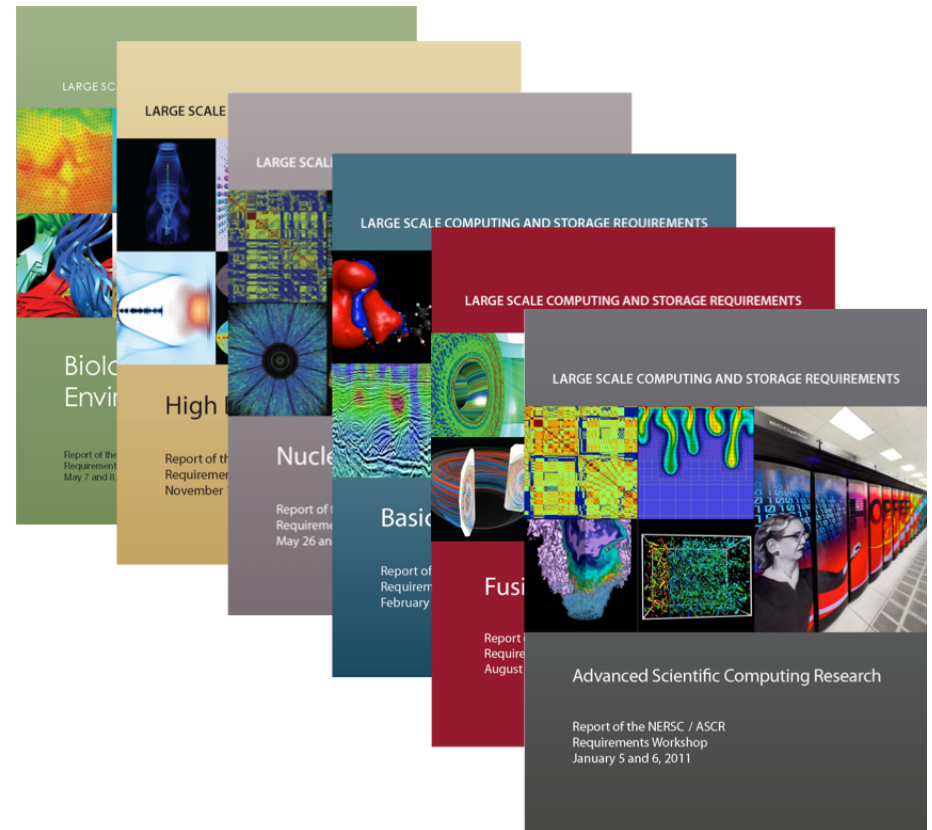
Forecasting



Requirements with six program offices



- Reviews with six program offices every three years
- Program managers invite representative set of users (typically represent >50% of usage)
- Identify science goals and representative use cases
- Based on use cases, work with users to estimate requirements
- Re-scale estimates to account for users not at the meeting (based on current usage)
- Aggregate results across the six offices
- Validate against information from in-depth collaborations, NERSC User Group meetings, user surveys



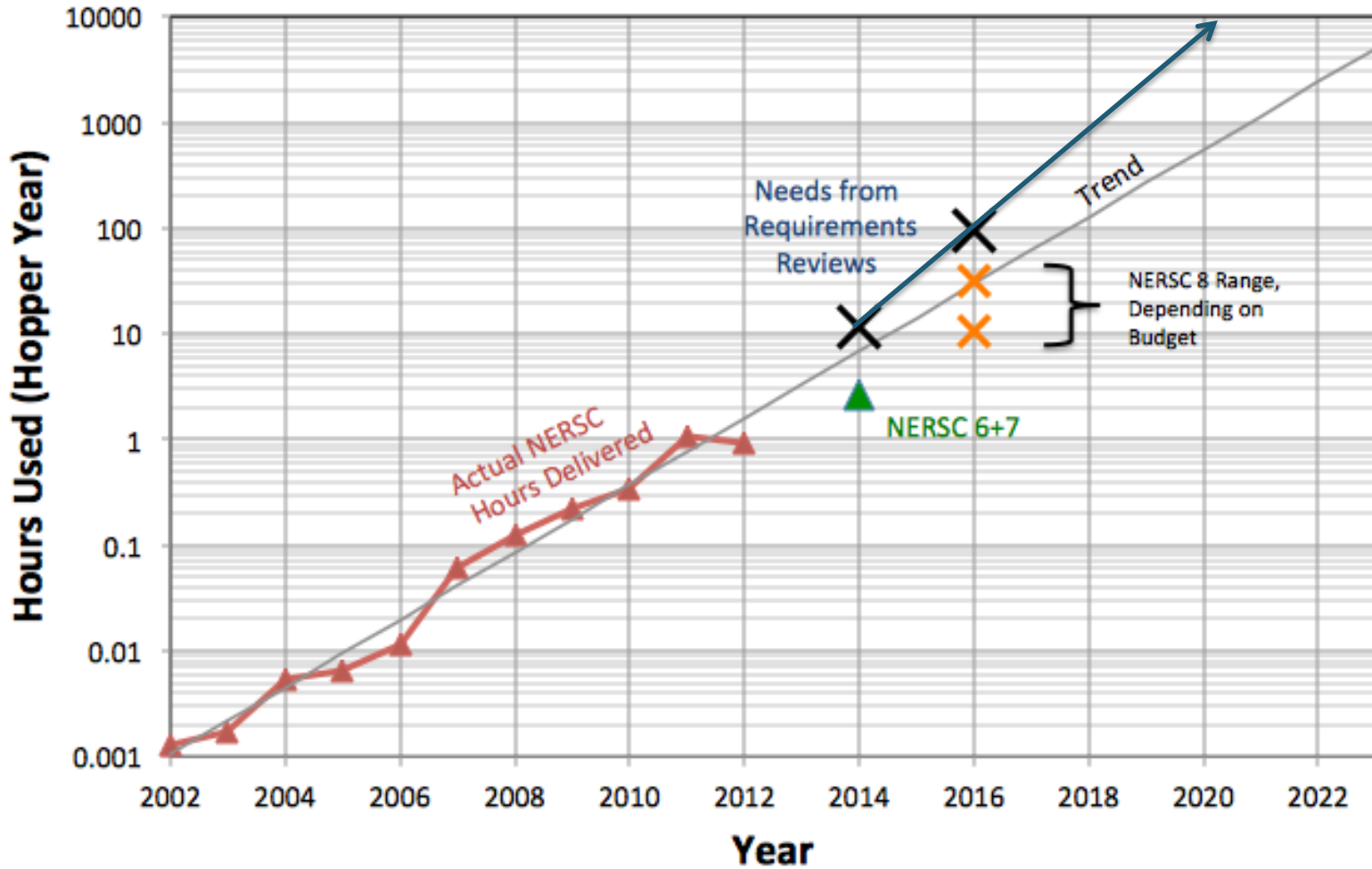
Tends to underestimate need because we are missing future users

<http://www.nersc.gov/science/requirements-reviews/final-reports/>

Keeping up with user needs will be a challenge



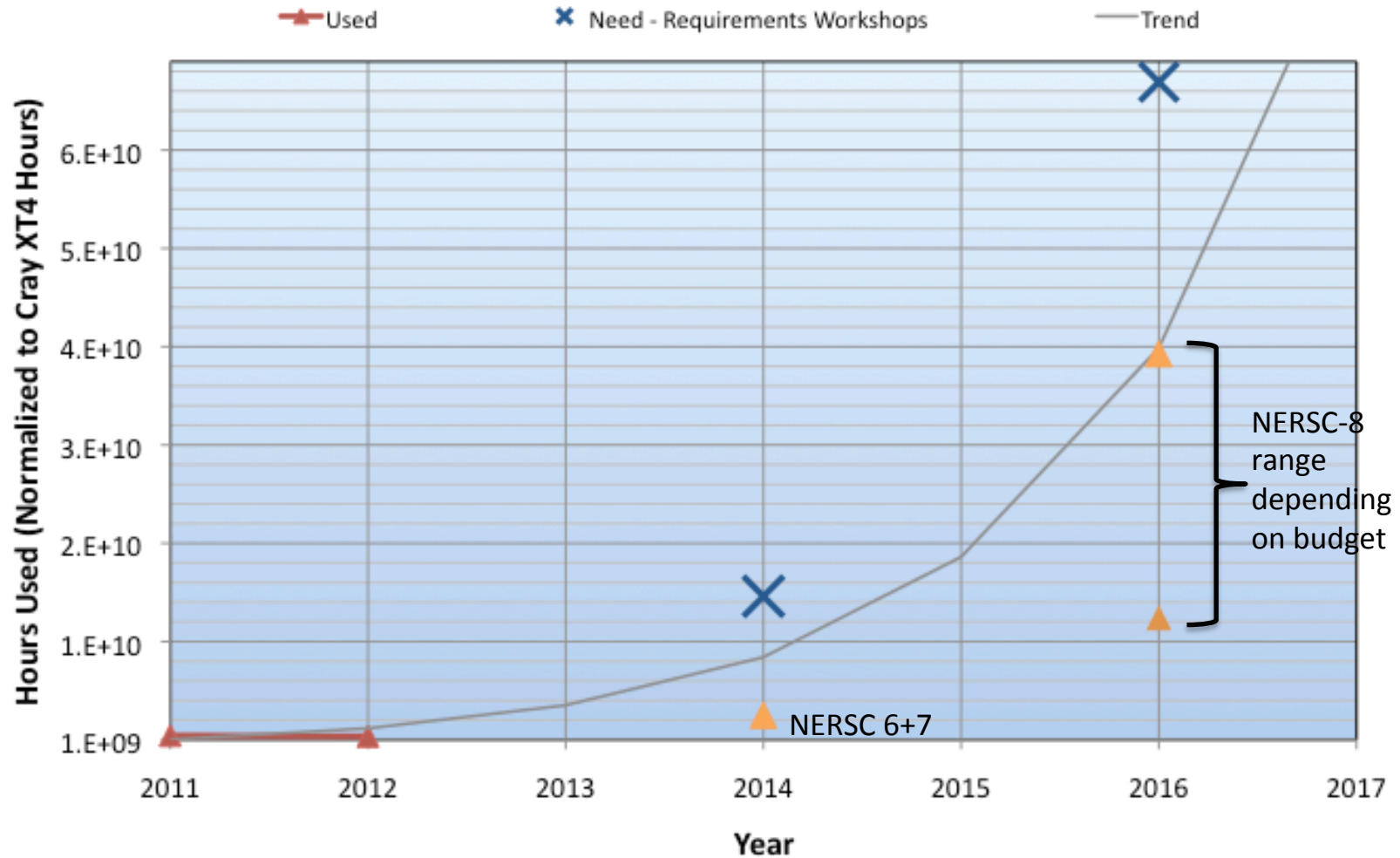
Computing at NERSC



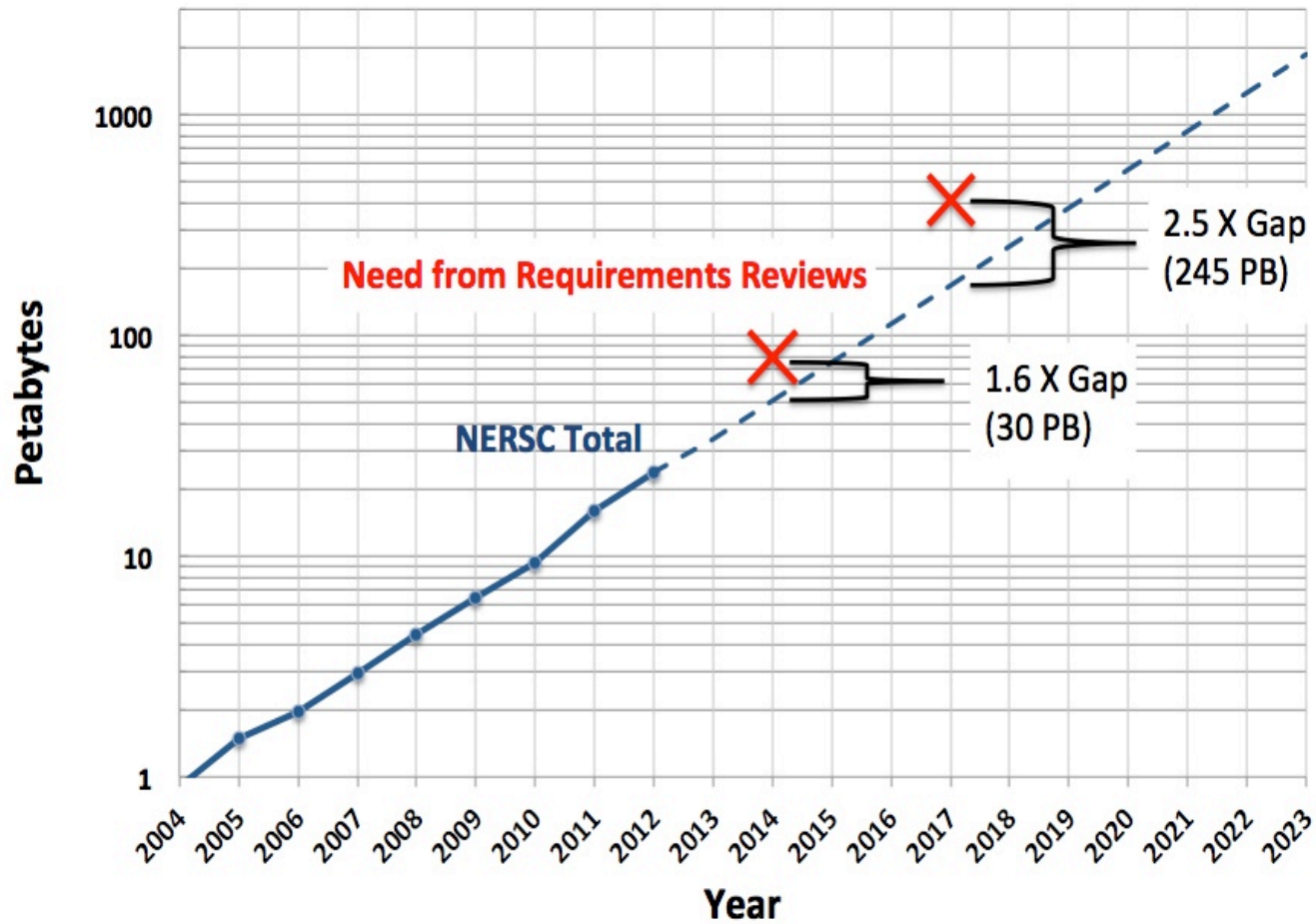
Keeping up with user needs will be a challenge (cont.)



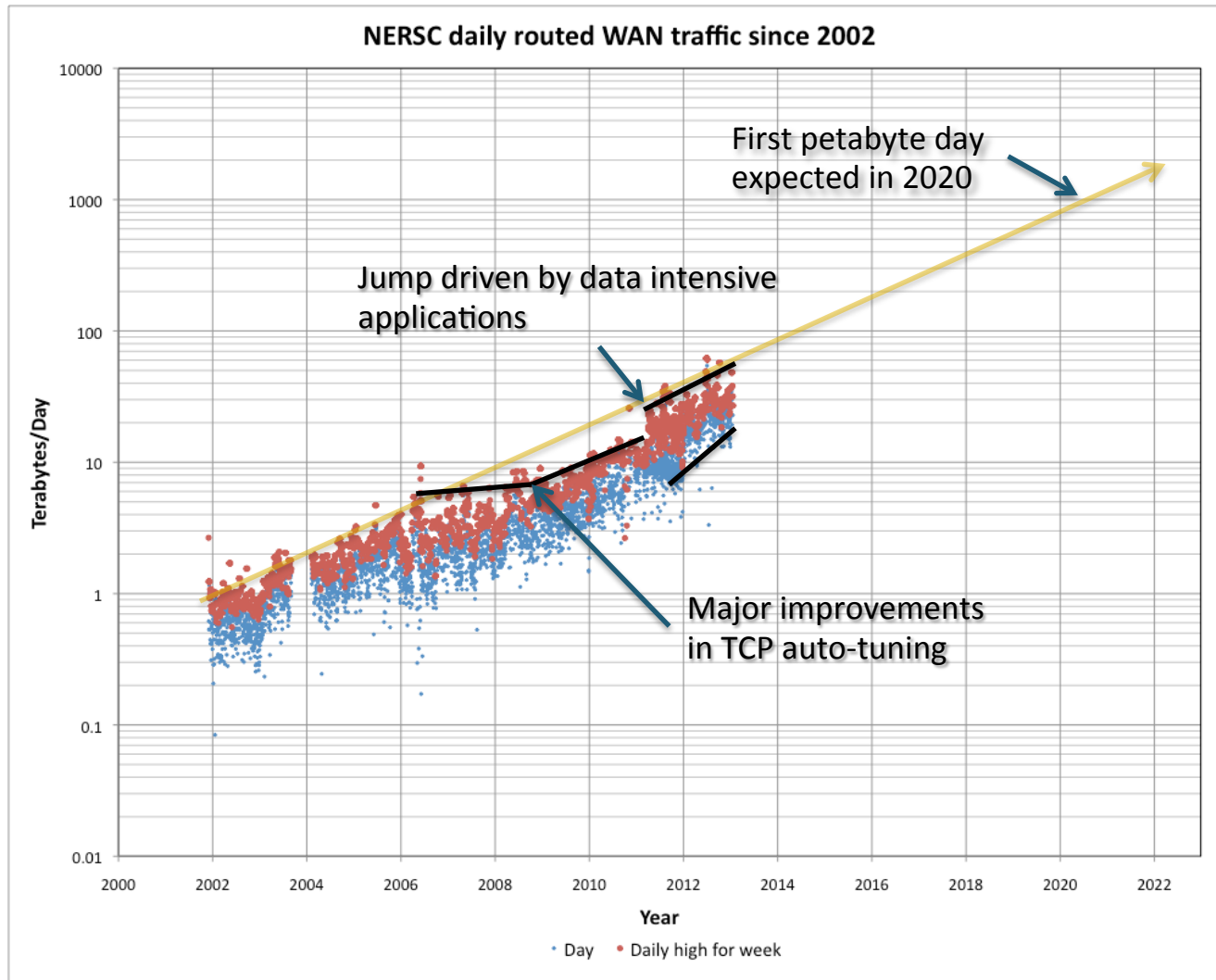
Office of Science Production Computing



Future archival storage needs



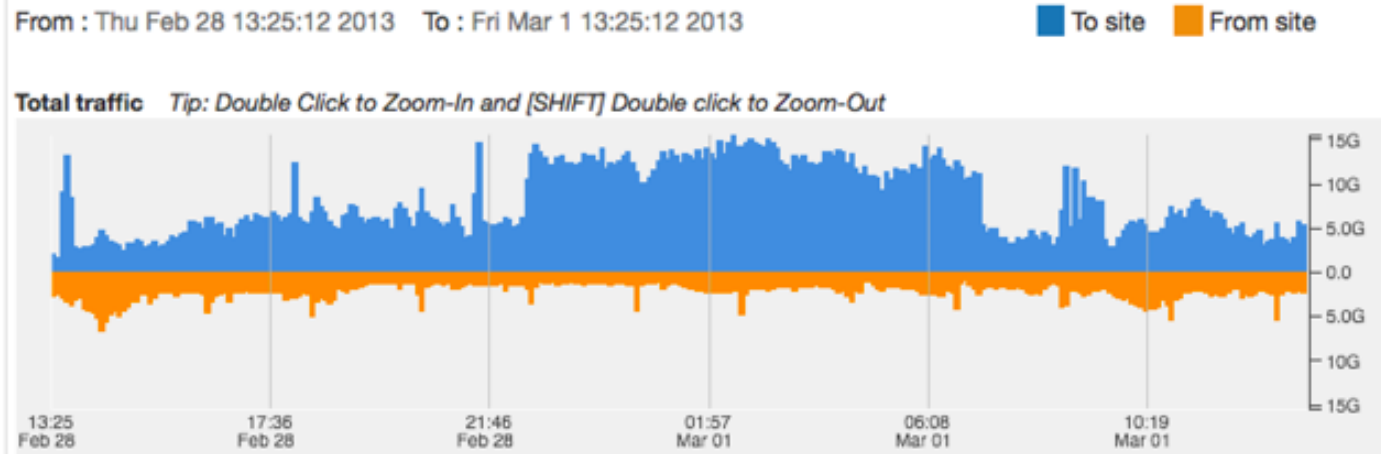
Exponentially increasing data traffic



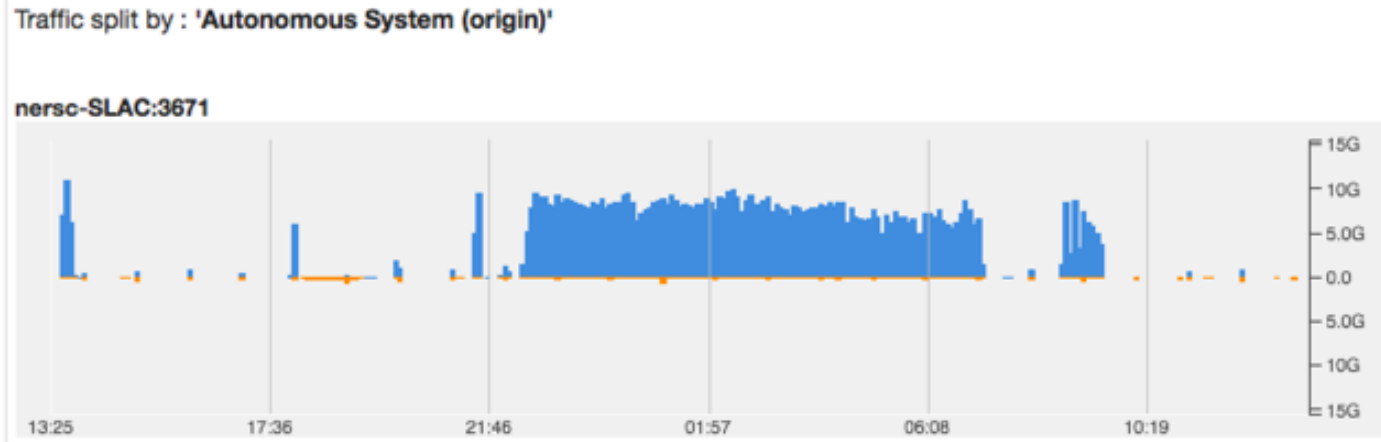
Cross Bay Data Transfer



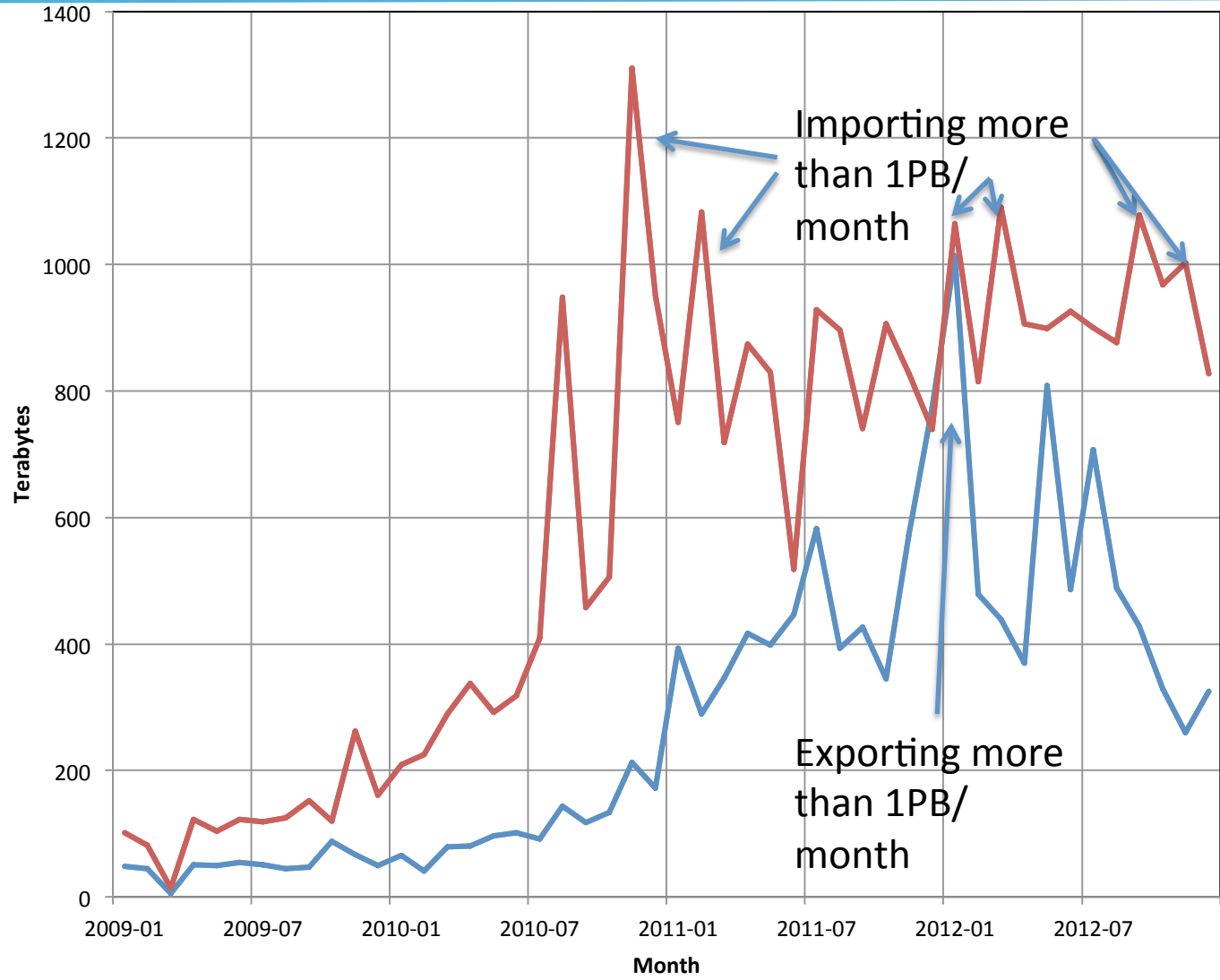
All NERSC
Traffic



Photosystem II
X-Ray Study



NERSC users import more data than they export!

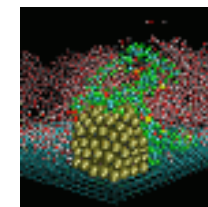
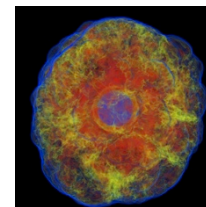
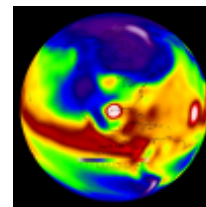
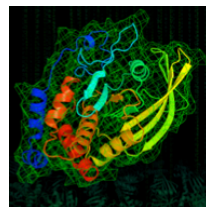
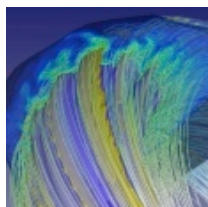
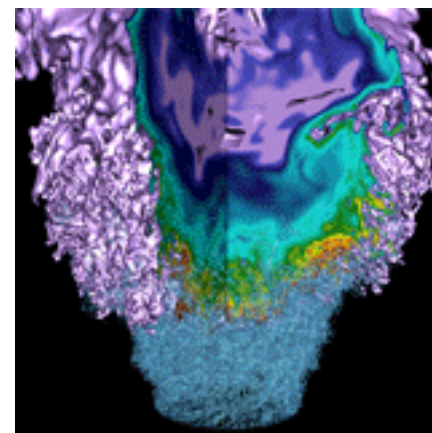


Office of Science

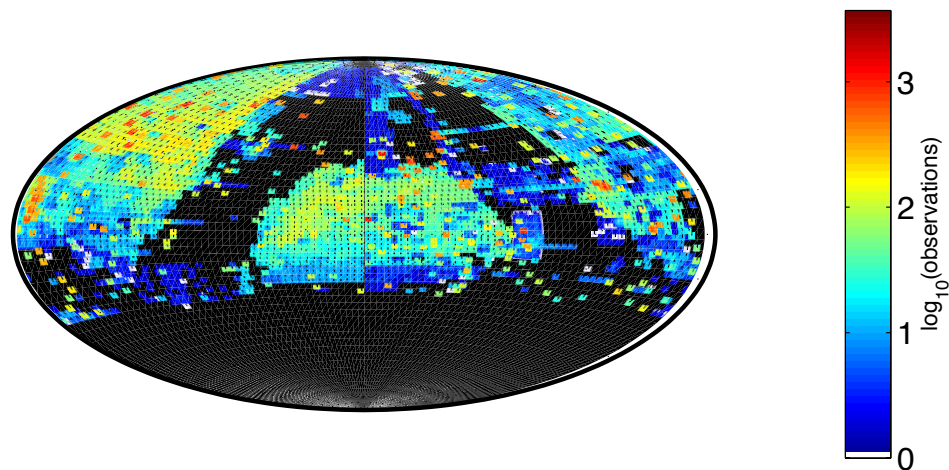
Total Out (TB) Total In (TB) 26 Total Out (TB) Total In (TB)



Data Analysis is Playing a Key Role in Scientific Discovery



Astrophysics



Palomar Transient Factory: Discovered over 2000 spectroscopically confirmed supernovae in the last 5 years, including the youngest and closest Type Ia supernova in past 40 years.



67 refereed publications to-date including 2 in *Science Magazine* and 4 *Nature* articles. Processing pipeline runs on NERSC's systems nightly and makes heavy use of the Science Gateway Nodes to share the data among the collaboration.

Solving the Puzzle of the Neutrino

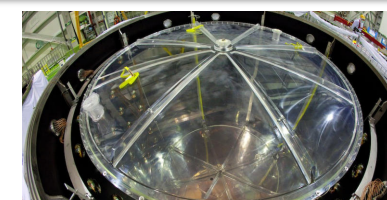


- HPC and ESnet vital in the measurement of the important “ θ_{13} ” neutrino parameter.
 - Last and most elusive piece of a longstanding puzzle: why neutrinos appear to vanish as they travel
 - The result affords new understanding of fundamental physics; may eventually help solve the riddle of matter-antimatter asymmetry in the universe.
- HPC for simulation / analysis; HPSS and data transfer capabilities; NGF and Science Gateways for distributing results
 - All the raw, simulated, and derived data are analyzed and archived at a single site
 - => Investment in experimental physics requires investment in HPC.
- One of Science Magazine’s Top-Ten Breakthroughs of 2012

The Daya Bay experiment counts antineutrinos at three detectors (shown in yellow) near the nuclear reactors and calculates how many would reach the detectors if there were no oscillation transformation.



NERSC’s PDSF cluster

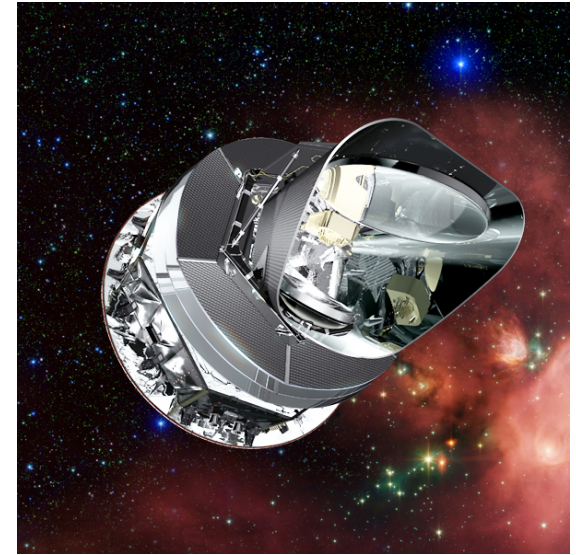


Daya Bay detectors

The Planck Mission



- **A European Space Agency (+NASA) satellite mission to measure the temperature and polarization of the Cosmic Microwave Background.**
 - The echo of the Big Bang: primordial photons have seen it all.
 - Fluctuations encode all of fundamental physics & cosmology.
 - Planck results assumed by all Dark Energy experiments.
- **Realizing the full scientific potential of Planck requires very significant computing resources**
 - Tiny signal (μK - nK) requires huge data volume for sufficient S/N
 - 72 detectors sampling at 30-180Hz for 2.5 years $\Rightarrow 10^{12}$ samples.
 - Analysis depends critically on Monte Carlo methods
 - Simulate and analyze 10^4 realizations of the entire mission!
- **One of Physics World's Top 10 Breakthroughs of 2013**



Materials Project



❑ **Idea:** Much 'cheaper' and faster to pre-screen materials using computations than making them in lab. More than 35, 000 inorganic materials calculated in 2 years, coupled with online design and search tools.

❑ NERSC is the simulation engine behind Materials Project and www.materialsproject.org is a science gateway hosted at NERSC which connects HPC simulation and data to the web.

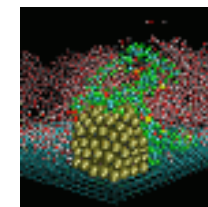
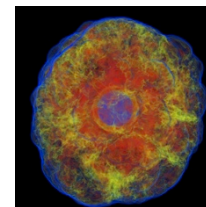
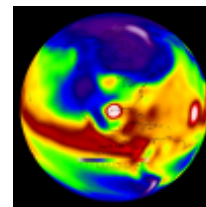
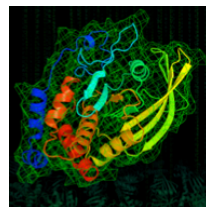
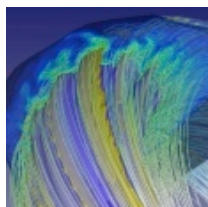
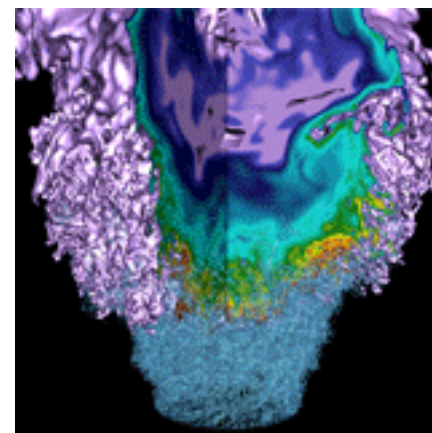
❑ **Users Dec 2013:**



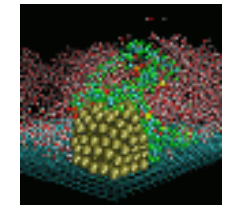
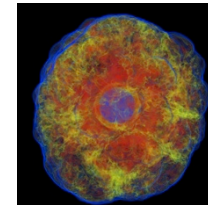
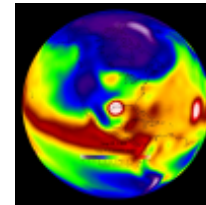
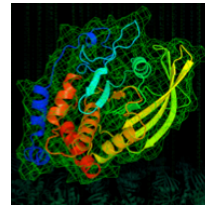
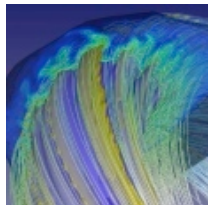
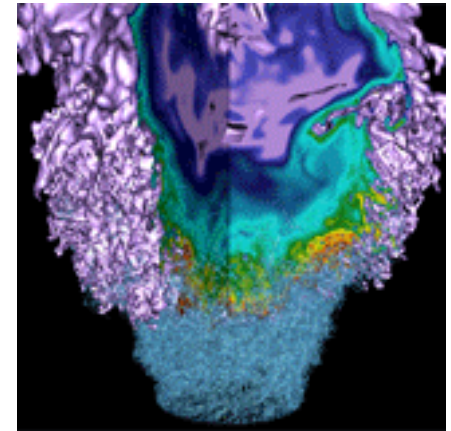
❑ **Companies that use resource:** Toyota, Sony, Bosch, 3M, Honda, Samsung, LG Chem, Dow Chemicals, GE Global Research, Intermolecular, Applied Materials, Energizer, Advanced Materials, General Motors, Corning, DuPont, Nippon Steel, L'Oreal USA, Caterpillar, HP, Unilever, Lockheed Martin, Texas Instruments, Ford, Bose, Sigma-Aldrich, Siemens, Raytheon, Umicore, Seagate, ...



Exascale and Big Data Face the same Computing Challenges



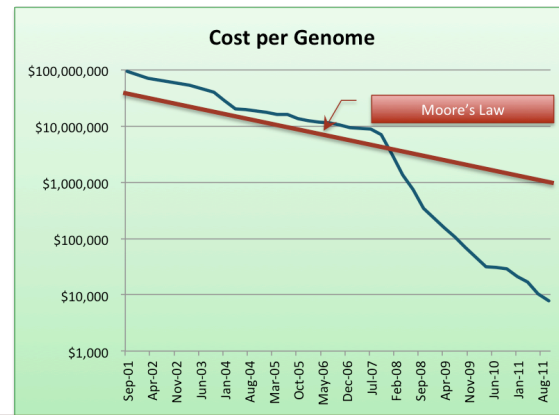
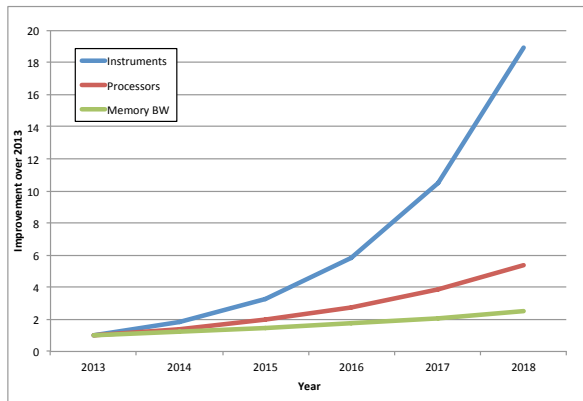
Data deluge at experimental facilities
and improved networking will
accelerate this trend towards data
intensive computing



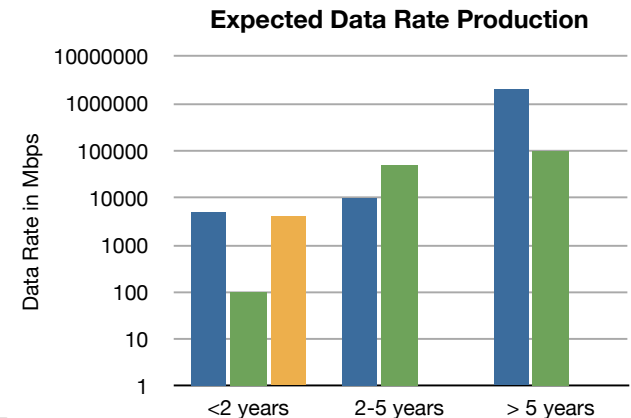
DOE experimental facilities are also facing extreme data challenges



- The observational dataset for the Large Synoptic Survey Telescope will be ~100 PB
- The Daya Bay project will require simulations which will use over 128 PB of aggregate memory
- By 2017 ATLAS/CMS will have generated 190 PB
- Light Source Data Projections:
 - 2009: 65 TB/yr
 - 2011: 312 TB/yr
 - 2013: 1.9 PB /yr
 - EB in 2021?
 - NGLS is expected to generate data at a terabit per second

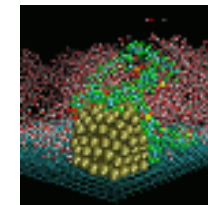
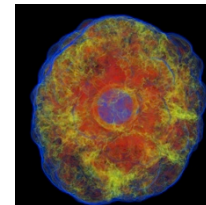
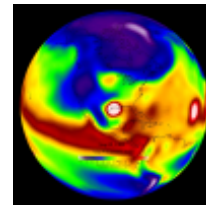
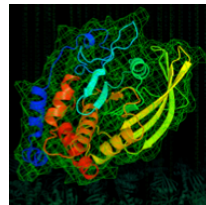
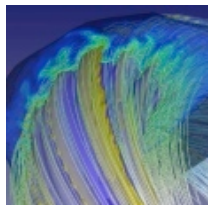
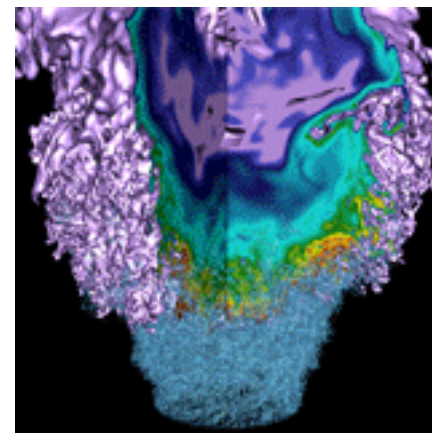


Source: National Human Genome Research Institute



■ ALS ■ NLS ■ SLAC

NERSC Strategy

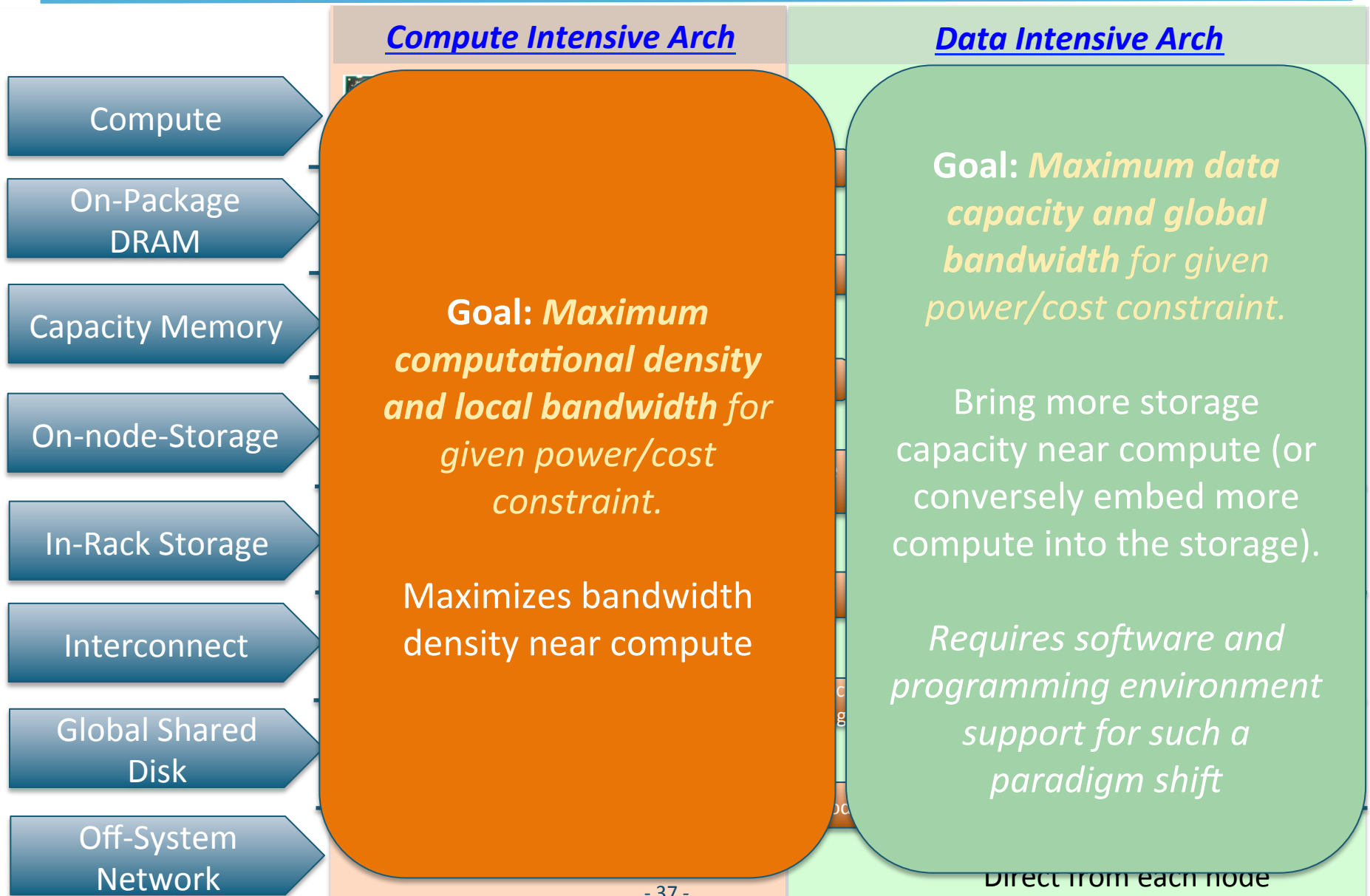


Strategic Objectives

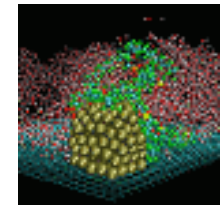
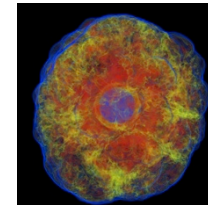
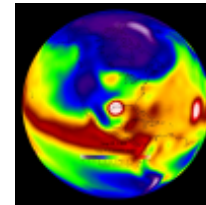
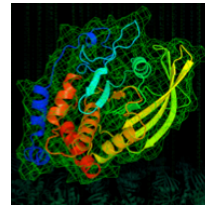
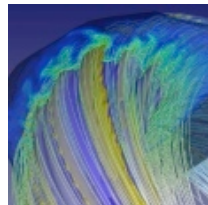
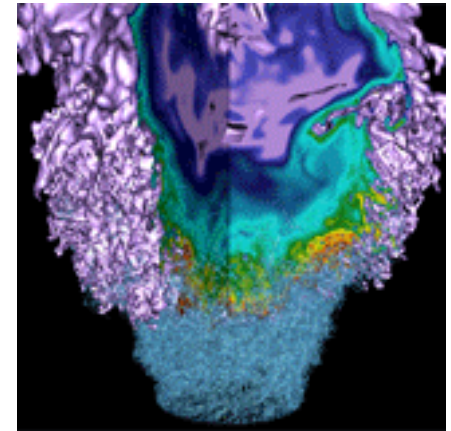


- **Meet the ever-growing computing and data needs of our users by**
 - providing usable exascale computing and storage systems
 - transitioning SC codes to execute effectively on manycore architectures
 - influencing the computer industry to ensure that future systems meet the mission needs of SC
- **Increase the productivity, usability, and impact of DOE's user facilities by providing comprehensive data systems and services to store, analyze, manage, and share data from those facilities**

Unique data-centric resources will be needed



NERSC System Plan



Major Technology Changes That Will Improve Usability



- **2015-16 NERSC-8/Trinity**
 - High-bandwidth on-package memory
 - “Burst Buffers” – NVRAM enhanced I/O
- **2017-18 CORAL**
 - On-die NIC – lower latency
 - On-node NVRAM
- **2019-20 NERSC-9/ATS-3**
 - P0 exascale processor
 - Emerging Exascale Programming Model
 - Object-based storage
 - Advanced memory technologies
 - Processing Near Memory (processing data where it is located)
 - Advanced power management technology
 - Coherence domains & fine-grained interprocessor communication
- **2021-22 CORAL+1**
 - P1 exascale processor
 -

All of these can be enhanced with judicious NRE investments

NERSC Upgrades: Meeting Demand



System attributes	NERSC-6	NERSC-7	NERSC-8 (proposed)	NERSC-9 (Proposed)
	Hopper	Edison		
System peak	1.3 PF	2.6PF	20-40PF	250-500 PF
Power	2.9 MW (Peak) 2.2MW (Typical)	2.3 MW (Peak) 1.6 MW (Typical)	<5 MW (Peak)	< 15 MW (peak)
System memory	0.21 PB	0.35 PB	1-2 PB	~10 PB (128 GB on package, 512-1024 GB DRAM)
Node performance	202GF	460 GF	2-3.5TF	~10 TF
Node memory BW	50 GB/s	90 GB/s	100-500 GB/s	~200 GB/s ? 2-4 TB/s on package
Node concurrency	24 AMD Magnycours cores	24 Intel Ivy Bridge Cores	up to 300	Up to 2048
System size (nodes)	6,384 nodes	5,576 nodes	8,000-12,000 nodes	O(10,000)
MPI Node Interconnect BW	~3 GB/s	~9GB/s	~9 GB/s	Up to 50 GB/s